

COR CERTIFICATE OF RECOGNITION

WHAT IS A CERTIFYING PARTNER AND WHY DO I NEED ONE?

A Certifying Partner is an organization that, through agreement with WorkSafeBC, helps guide employers towards earning a certificate of recognition (COR) – a certificate awarded to an employer who has implemented a management system as verified by an audit. Certifying Partners are typically safety associations recognized by WorkSafeBC as having in-depth industry knowledge that is used to promote and develop workplace health and safety. Employers must register with Certifying Partners specific to their industry. The Certifying Partner guides the employer to implement an effective health and safety management system, and helps the employer complete and pass a qualifying audit.

What services can I expect from a Certifying Partner?

ASSISTS	with resources, training, and other aspects necessary to obtain a COR
OFFERS	industry-specific training and develops audit requirements appropriate to the industry, based on WorkSafeBC standards
REGISTERS	employers in the program
PROVIDES	the appropriate auditing tools, assists with the provision of certified auditors and training when required or requested
MAINTAINS	confidentiality, and quality assurance of employer records and audits.

Who are the Certifying Partners?

As of January 2011 agencies working in partnership with WorkSafeBC as COR Certifying Partners include:



How do I register for the program?

Employers wishing to register for the program should contact the certifying partner for their industry. Check the WorkSafeBC website to determine the appropriate certifying partner.

http://www.worksafebc.com/insurance/partners_program/certifying_partners/default.asp

If you can't find a certifying partner for your industry contact the Partners Program by e-mail or call 604 244-6164, toll-free 1 866 644-6164.

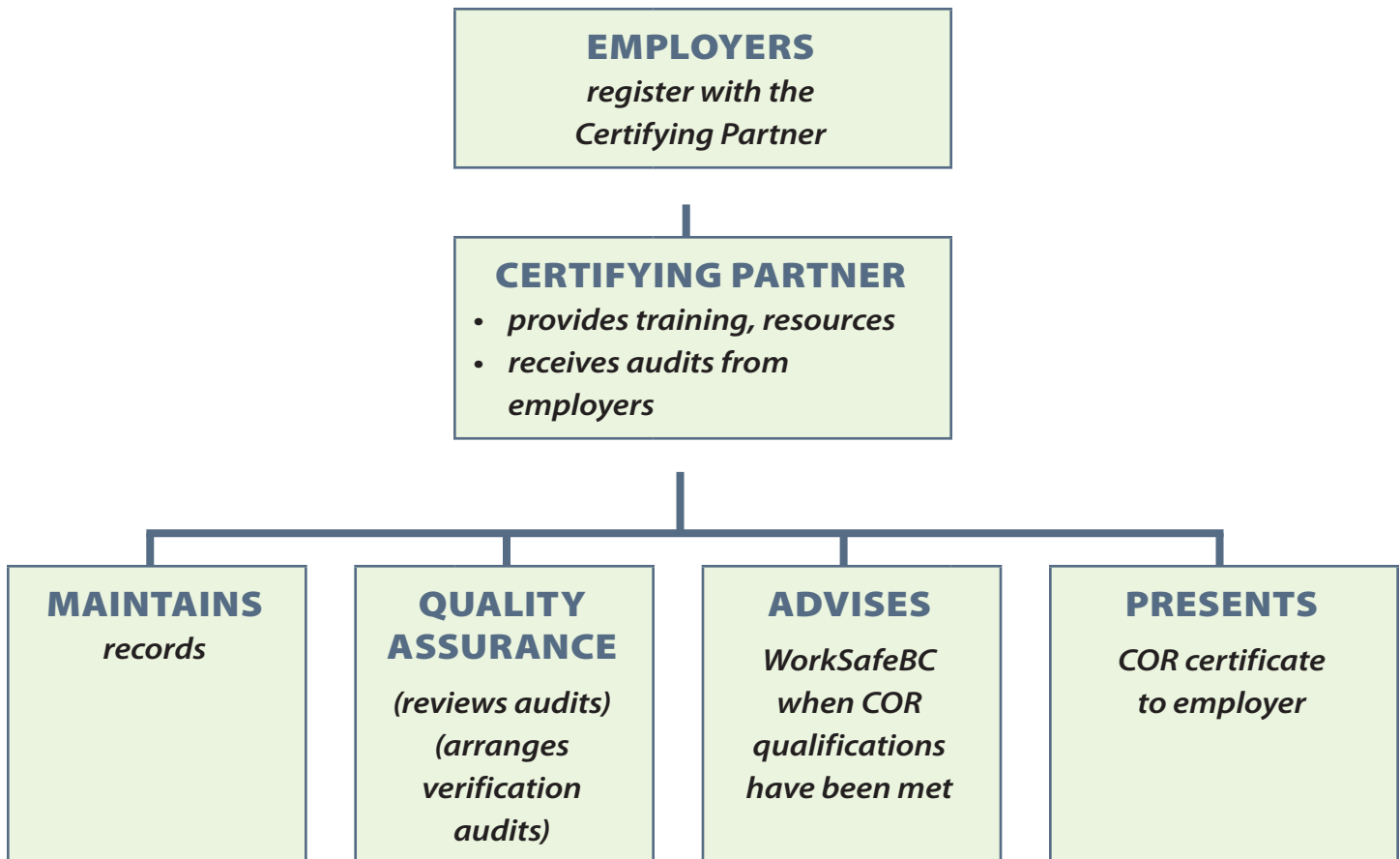
Note: In rare circumstances when an employer chooses to become certified with more than one Certifying Partner within the same industry sector, the employer is eligible to receive only one WorkSafeBC incentive annually.

How much will my Certifying Partner charge?

The Certifying Partner may charge small fees for certain aspects of the program. Ultimately, the cost to participate varies depending on the size of an employer's operations, the industry in which the employer operates, and the Certifying Partner responsible for that industry.

Potential costs include: training costs, performing audits, implementing and managing the management systems.

What role does my Certifying Partner (CP) play in issuing my COR?



What role does my Certifying Partner play in issuing my incentive payment?

Annually, each Certifying Partner submits a list to WorkSafeBC of employers with active certifications with their agency. This includes employers who received their certification during that year, as well as employers who received certification in previous years and have maintained their COR qualification by submitting maintenance audits.