



It's in everyone's interest

Workers' Compensation Board of B.C.
2000 Statistics



Introduction

This report on statistics is published annually as a complement to the operational and financial reviews covered in the annual report of the Workers' Compensation Board of B.C.

Statistics 2000 contains statistics on three key areas of operation: claims, assessments, and prevention. This information provides both a general overview of the workers' compensation system, and trends of key statistical indicators. To allow for valid comparisons, the format of the tables and exhibits have been kept as consistent as possible with those used in previous years' editions of this report.

In February 2000, the Workers' Compensation Board revised the system it uses to classify employers into classes and subclasses of industry. For administrative purposes, the revised classes are now known as sectors, and the revised subclasses are now known as subsectors. When the new classification structure was introduced, historical records were converted to the new structure. It is, therefore, possible in *Statistics 2000* to publish statistical time series on a subsector basis.

There are a series of tables presented by subsector in *Statistics 2000* that were presented by subclass in *Statistics '99* and prior publications. These tables are: Table A-1, number of claims first paid in 2000 by type of claim and subsector; Table A-1, historical by subsector; Table A-1, number of fatalities, 10-year counts of fatal claims by subsector; Table A-2, claim costs charged by

subsector and type of claim; Table B-1, days lost and accident type by subsector; and Table B-2, injury rates and claim durations by subsector. The Classes of Industry section, starting on page 53, lists the types of industrial activities that make up each subsector.

Since the introduction of the new classification system, a number of employers have been reclassified into new subsectors. These reclassifications are considered to be effective January 1, 2000, and this is the convention that is followed in *Statistics 2000*. The experience of these employers prior to 2000 is tabulated in the subsectors the employers were originally assigned to, and the experience of these employers in 2000 is tabulated in the subsectors they have been reclassified into. The impact of the reclassifications is very minor at the subsector level.

The publication *Occupational Injuries by Accident Type and Occupation in British Columbia, 1997, 1998 and 1999* is also available. Order your copy from the WCB Publications and Videos at 604 276-3068, toll free 1 800 661-2112, local 3068, fax 604 279-7406, or e-mail pubvid@wcb.bc.ca. For more detailed statistics on specific topics, contact the WCB Statistical Services Department at 604 276-3130, or send your information request by fax to 604 276-3290. Abstracts of reports published by Statistical Services are also available on the WCB WorkSafe™ online web site at www.worksafebc.com by following path: Topics/Reports & Statistics/Industry Trends.

Contents

Claim Statistics

Reported Claims	4	Number of Claims First Paid in 2000 Analyzed by Subsector and Type of Claim (Table A-1)	18
Deaths Occurring in 2000 and Reported by February 16, 2001	5	Number of Claims First Paid in 1991–2000 Analyzed by Type of Claim (Table A-1 – Historical by Claim Type)	21
Claims Accepted for Fatal Benefits in 2000 According to Agency with Inspectional Jurisdiction	6	Total of Health-care-only, Short-term Disability, Long-term Disability, and Fatal Claims First Paid in the Year, by Subsector, for 1999 and 2000 (Table A-1 – Historical by Subsector)	22
Claims Accepted for Fatal Benefits, 1991–2000, by Category of Injury or Disease	7	Number of Claims Accepted for Fatal Benefits by Subsector and Year Accepted (Table A-1 – Number of Fatalities)	25
Number and Costs of Claims	8	Claims Accepted for Fatal Benefits in 2000 (Table A-1 – Fatality Descriptions)	28
Distribution by Type of Claim	8	Claim Costs Charged in 2000 by Subsector and Type of Claim (Claims From All Years) (Table A-2)	37
The Total Number of Work Injuries Reported and the Total Number of Short-term Disability, Long-term Disability, and Fatal Claims First Paid During Each of the Years 1991–2000	9	Claim Costs Charged in 1991–2000 by Type of Claim (Claims From All Years) (Table A-2 – Historical)	40
Compensation Cost by Type of Benefit	10	An Analysis by Subsector of the 72,314 Short-term Disability, Long-term Disability, and Fatal Claims First Paid in 2000 and an Analysis of the Number of Days Lost During 2000 on Claims for All Years (Table B-1)	41
Compensation Cost by Type of Claim	10	Days Lost, Average Weekly Wage, Average Age, and Breakdown by Gender for Short-term Disability, Long-term Disability, and Fatal Claims, 1991–2000 (Table B-1 – Historical)	45
Key Indicators in <i>Statistics 2000</i>	11		
Days Lost From Work	14		
Percentage of Injuries by Gender of Worker	15		
Number of Claims and Claim Costs by Provincial Regional District for 2000	16		

Injury Rates and Claim Durations for Rateable Subsectors, 1996–2000 (Table B-2)	46
An Analysis by Year of Injury of the Total Days Lost During 2000 and the Number of Short-term Disability, Long-term Disability, and Fatal Claims First Paid in 2000 (Table C)	48
An Analysis by Sector of Industry, Gender, and Age Group of the Short-term Disability, Long-term Disability, and Fatal Claims First Paid in 2000 (Table D)	50
An Analysis by Injury of the Short-term Disability, Long-term Disability, and Fatal Claims First Paid, 1996–2000 (Table E)	51
Back Strain Claims (Excluding Health-care-only Claims) Paid for the First Time During 1991–2000 (Table F)	52

Assessment Statistics

Classes of Industry	53
Assessment Statistics (Rateable Employers)	66

Prevention Statistics

Breakdown of Field Officers' Time	67
Regional Services — Field Officers' Time	68
Hearing Conservation and Audiology Activities	68
Information Line Call Response Summary	69
First Aid Certificates Issued	70
Laboratory Services	71
Review and Penalty Activities	71

Other Publications Available From the WCB

.....	72
-------	----

Claim Statistics

Reported Claims

The number of claims reported to the WCB in 2000 was 184,131 — a 3.3 percent increase from the 178,187 claims reported in 1999.

Year	New Injuries Reported in the Year	Fatalities that Occurred in the Year and were Reported to the WCB by Feb 20 of the Following Year	Fatalities as a Percentage of New Injuries
1991	203,740	183	0.09%
1992	197,793	161	0.08%
1993	195,117	169	0.09%
1994	197,911	199	0.10%
1995	194,280	200	0.10%
1996	189,418	182	0.10%
1997	185,852	195	0.10%
1998	179,582	158	0.09%
1999	178,187	179	0.10%
2000	184,131	186	0.10%

First payment was made for 156 occupational deaths in 2000. Twenty-one of the 156 cases were pensioners who died from causes related to their compensable injuries or diseases. The 156 fatal claims first paid in 2000 cannot be compared to the 186 fatalities in the above chart because some of the fatalities first paid in 2000 occurred in and were reported in a prior year, and because some of the reported fatalities are not compensable. The 186 fatal claims tabulated in the above chart are broken down in the table on the opposite page. The 156 fatal claims first paid in 2000 are broken down by subsector in Table A-1.

Deaths Occurring in 2000 and Reported by February 16, 2001¹

	Adjudication Completed by February 16, 2001			Awaiting Adjudication or Application ² at February 16, 2001	Total Deaths Occurring in 2000 and Reported by February 16, 2001
	Accepted	Disallowed ³	Rejected ⁴		
Injury — Death and Accident Occurred in Same Year	80	5	5	15	105
Injury — Accident Occurred Prior to Year of Death	2	0	0	0	2
Occupational Disease — Silicosis	5	0	0	0	5
Occupational Disease — Other than Silicosis	35	20	1	18	74
TOTAL	122	25	6	33	186

¹ There were 12 deaths that occurred in 1999 but were not included in last year's table; they were reported to the WCB after February 18, 2000. All the deaths in this table occurred in 2000, but some of the accidents leading to the deaths occurred prior to 2000.

² Claims awaiting application typically involve cases where the deceased's relatives elect to sue a third party rather than claim compensation.

³ Disallowed claims are those that are judged to be not work related.

⁴ Rejected claims are those where the worker did not have WCB coverage. They were included in the "Awaiting Adjudication" column in previous versions of this table.

Claims Accepted for Fatal Benefits in 2000 According to Agency¹ with Inspectional Jurisdiction

	Workers' Compensation Board (Includes "Close-to-Shore" Fishing Fatalities) ²	Ministry of Mines	Ministry of Transportation and Highways	RCMP/Other Police		Transport Canada	Death Occurred Outside British Columbia	All Agencies
				Motor Vehicle Accidents	Other			
Injury — Death and Accident Occurred in Same Year	47	1	2	30	3	8	3	94
Injury — Accident Occurred Prior to Year of Death	4	-	-	1	1	-	-	6
Occupational Disease — Silicosis	2	5	-	-	-	-	-	7
Occupational Disease — Other Diseases	47	1	-	-	-	1	-	49
TOTAL	100	7	2	31	4	9	3	156

¹ This classification according to agency is done by the WCB.

² As of January 1, 1995, the WCB assumed inspectional jurisdiction of fishing fatalities that occur "close-to-shore."

Claims Accepted for Fatal Benefits, 1991–2000, by Category of Injury or Disease

Category of Injury or Disease	Year Accepted										1991– 2000
	1991	1992	1993	1994	1995	1996	1997	1998	1999	2000	
Injury — Death and Accident Occurred in Same Year ¹	100	90	89	109	94	99	115	67	78	94	935
Injury — Accident Occurred Prior to Year of Death	8	3	6	7	4	8	6	7	10	6	65
Asbestos Exposure	18	24	12	21	22	35	26	29	34	35	256
Other Disease	15	29	17	15	14	10	17	22	25	21	185
TOTAL	141	146	124	152	134	152	164	125	147	156	1,441

¹ There were 94 fatal claims accepted in 2000 in which the death and accident occurred in the same year. For some of the 94 cases the death and accident occurred prior to 2000. The numbers for the other years are on the same basis.

Number and Costs of Claims

During the year 2000, 140,020 claims were paid for the first time. Of those:

- 67,706 were health-care-only claims (formerly called medical-aid-only claims)
- 68,362 were short-term disability claims (formerly called wage-loss claims)
- 3,796 were long-term disability claims (formerly called permanent disability claims)
- 156 were fatal claims

In 2000, the WCB set aside \$3,600,346 in capitalized values of pension awards for long-term disability benefits on hearing-loss claims.

Compensation costs totalled \$1,000,647,277 in 2000, compared to \$902,490,206 in 1999. The figures include health care benefits, vocational rehabilitation benefits, short-term disability benefits, and capitalized values of pension awards, which are reserves set aside for present and future payments of long-term disability benefits and survivor benefits. The 2000 figure excludes the \$5,948,941 increase in widows' pension entitlement as ruled by the B.C. Supreme Court, and the 1999 figure excludes \$7,028,815 for that reason. The benefit liabilities figures shown in Note 7 of the *WCB 2000 Annual Report* are calculated on a different basis and are not comparable to these total compensation costs.

Distribution by Type of Claim

	2000		1999	
	Cost	% of Total	Cost	% of Total
Health-care-only Claims	\$28,989,725	2.9%	\$27,294,245	3.0%
Short-term Disability Claims ¹	\$489,214,970	48.9%	\$479,294,467	53.1%
Long-term Disability Claims ²	\$443,356,432	44.3%	\$366,217,345	40.6%
Fatal Claims	\$39,086,150	3.9%	\$29,684,149	3.3%
TOTAL³	\$1,000,647,277⁴	100.0%	\$902,490,206⁴	100.0%

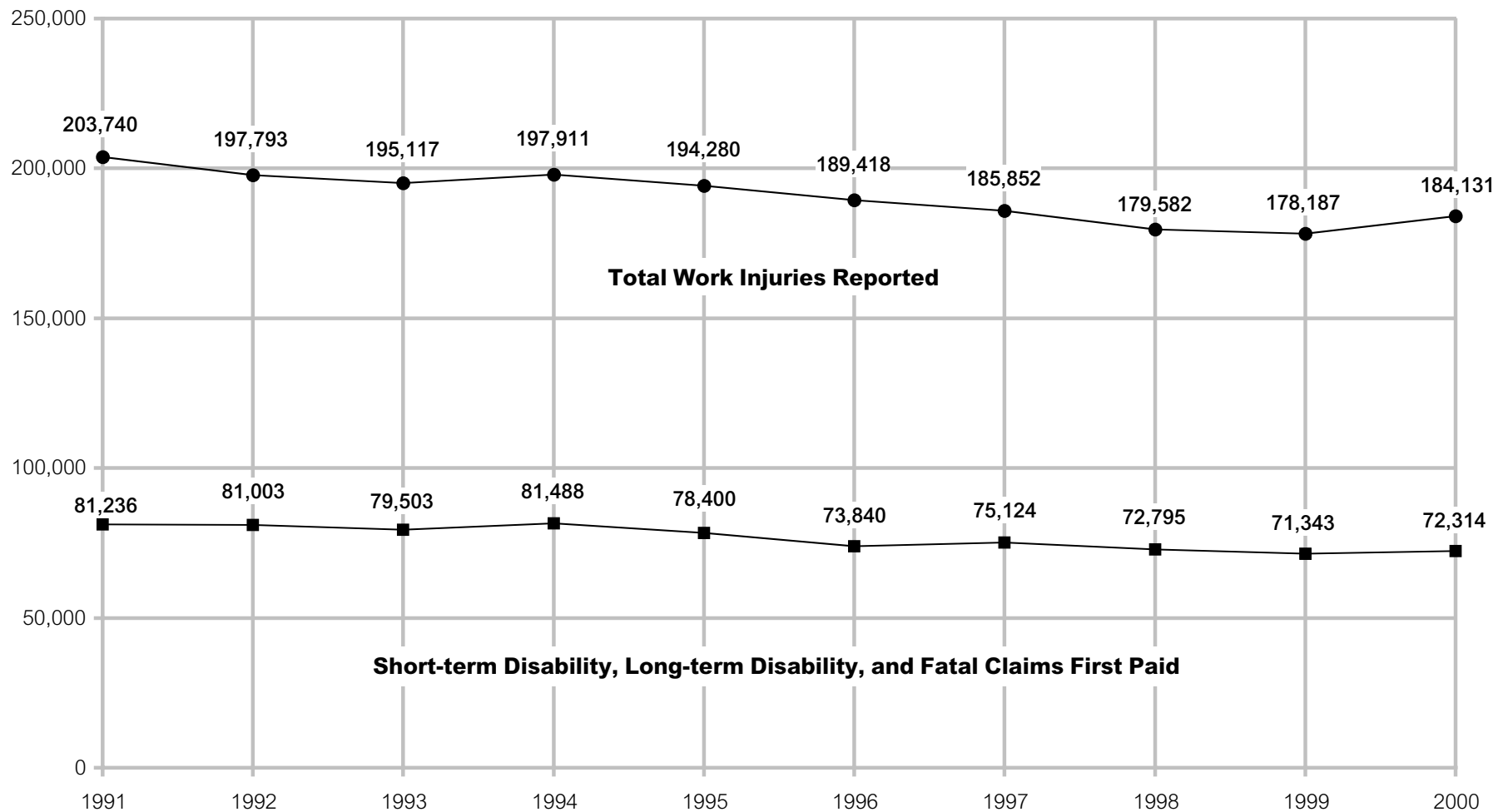
¹ Includes health care benefits paid on these claims.

² Includes health care and short-term disability benefits paid on these claims.

³ Due to rounding, totals may not balance.

⁴ The total cost of \$1,000,647,277 was calculated on a different basis than the total claim liability figure in Note 7 of the *WCB 2000 Annual Report*. Both the 1999 and 2000 cost totals exclude the increase in widows' pension entitlement arising from *Bill 63* and the 1997 B.C. Supreme Court decision. A subsector breakdown of claim costs is provided in Table A-2 of this report.

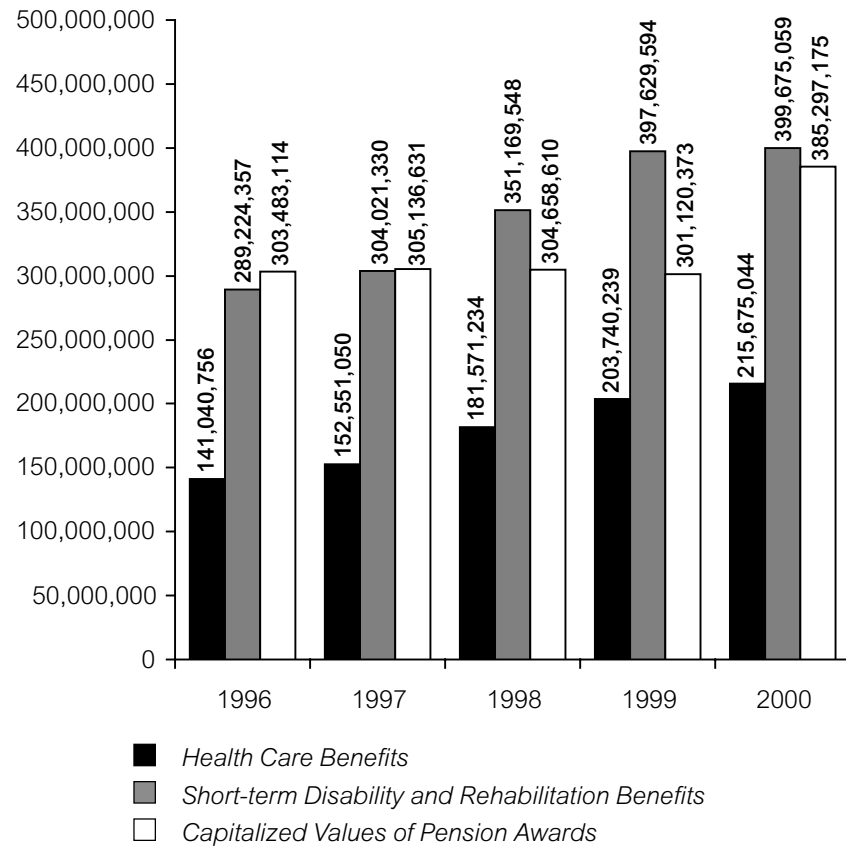
The Total Number of Work Injuries Reported and the Total Number of Short-term Disability¹, Long-term Disability², and Fatal Claims First Paid During Each of the Years 1991–2000



¹ Short-term disability is the term for what was called *wage loss* in 1991 and earlier versions of this exhibit.

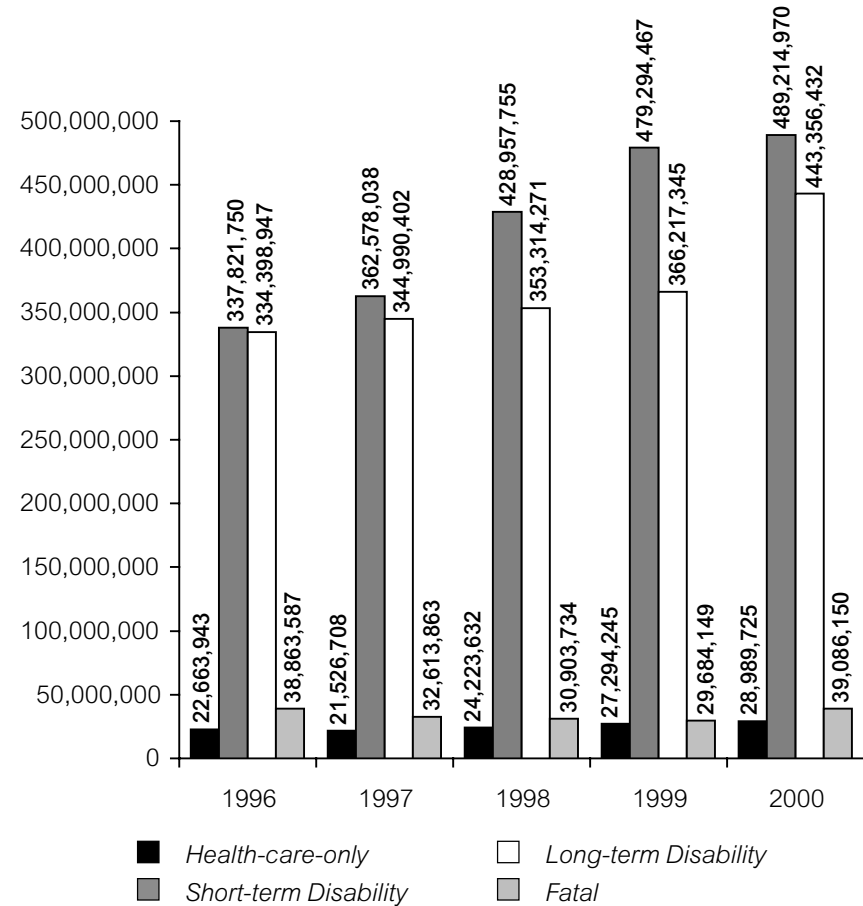
² Long-term disability is the term for what was called *permanent disability* in 1991 and earlier versions of this exhibit.

Compensation Cost by Type of Benefit



1997, 1998, 1999, and 2000 Capitalized Values of Pension Awards exclude the increase in widows' entitlement arising from *Bill 63* and the 1997 B.C. Supreme Court decision.

Compensation Cost by Type of Claim



1997, 1998, 1999, and 2000 fatal costs exclude the increase in widows' entitlement arising from *Bill 63* and the 1997 B.C. Supreme Court decision.

Key Indicators in *Statistics 2000*

This series of charts of 10-year trends of statistical indicators first appeared in the *Statistics '92* report. Although none of the indicators has changed dramatically from one year to the next, over the last 10 years there have been some significant trends.

In 1994, *Bill 63* covered a number of industry groups for the first time under the *Workers Compensation Act*. The 10-year charts in this section include the *Bill 63* industries for each of the 10 years to make the 10-year trend valid. (The statistics for the 1991–1993 period have been adjusted to reflect what they would likely have been if *Bill 63* had been in effect since 1991.) The five-year trend shown in Table B-2 is also on the “including *Bill 63*” basis.

The first chart shows claim duration as measured in days per claim. Five components of duration are shown on the chart: days lost per claim in the injury year, and days lost per claim in each of the four years following the injury year. This is the Association of Workers' Compensation Boards of Canada (AWCBC) recommended method of showing duration that Canadian compensation systems have adopted as a standard. The chart indicates that duration has generally increased since 1991, but turned down in 2000.

The second chart shows that one of WCB's most important statistical indicators — the injury rate — has declined steadily since 1991. The injury rate is the number of short-term disability claims per 100 person-years of covered

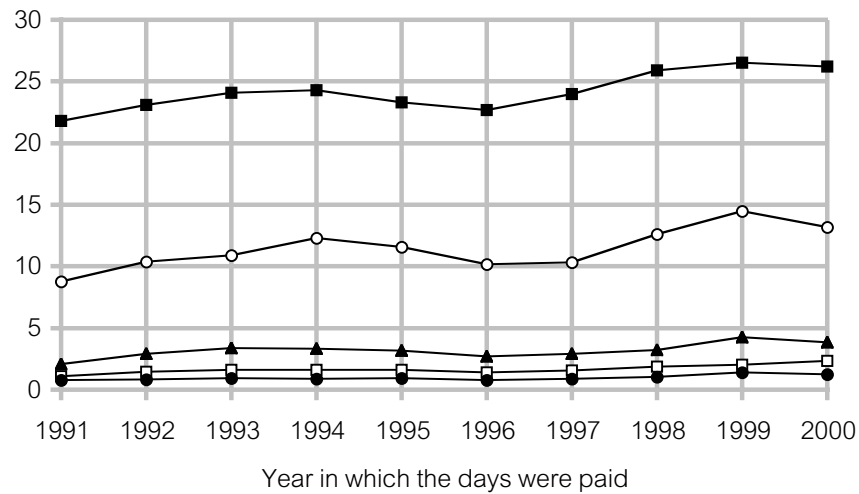
employment (100 person-years is equivalent to 100 full-time employees). For the purpose of the injury rate calculation, the number of “short-term disability” claims is the number of claims accepted for short-term disability, long-term disability, or survivor benefits either in the year of injury or in the first quarter of the following year. The estimates of persons-years are based on gross payrolls that covered employers report to the Board.

The third indicator — the fatality rate — is related to the second indicator. The fatality rate is the number of accepted fatal claims per 100 person-years of covered employment. The fatality rate also shows an overall downward trend during the past 10 years.

The fourth chart shows the percentage of short-term disability claims represented by claimants whose injuries were back strains. Back strains have accounted for approximately 25 percent of all short-term disability claims for each year in the past 10 years. It is the type of injury the WCB sees most often.

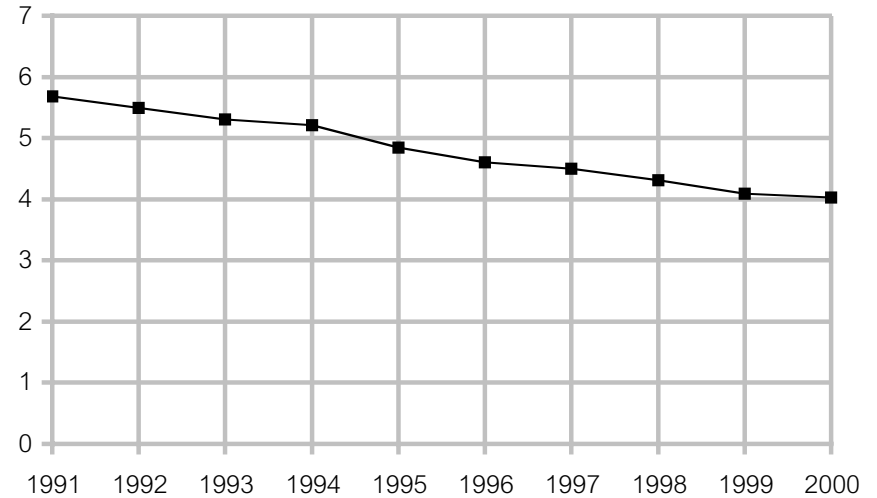
The last two charts reflect shifts in the population of covered workers. The fifth chart shows that the percentage of female claimants has increased from 23 percent in 1991 to 29 percent in 2000; the sixth chart shows that the percentage of claimants younger than 25 years of age has decreased from 19 percent in 1991 to 15 percent in 2000.

Number of days paid per claim

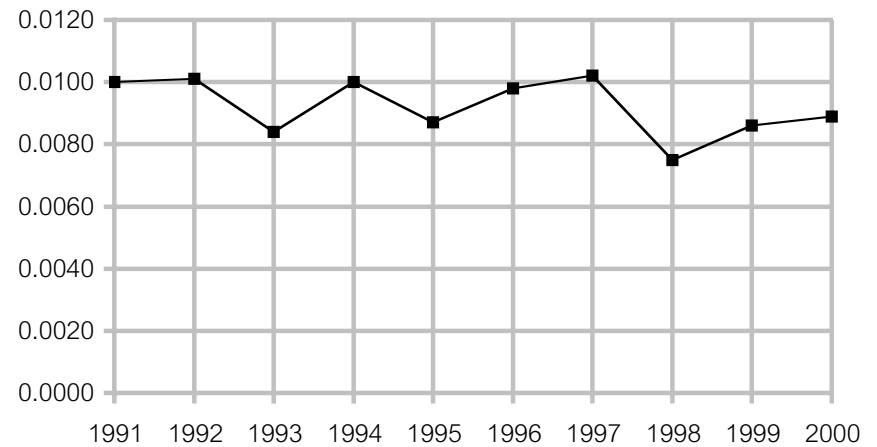


- Days paid per claim in the injury year
- Days paid per claim in the first year after the injury year
- ▲ Days paid per claim in the second year after the injury year
- Days paid per claim in the third year after the injury year
- Days paid per claim in the fourth year after the injury year

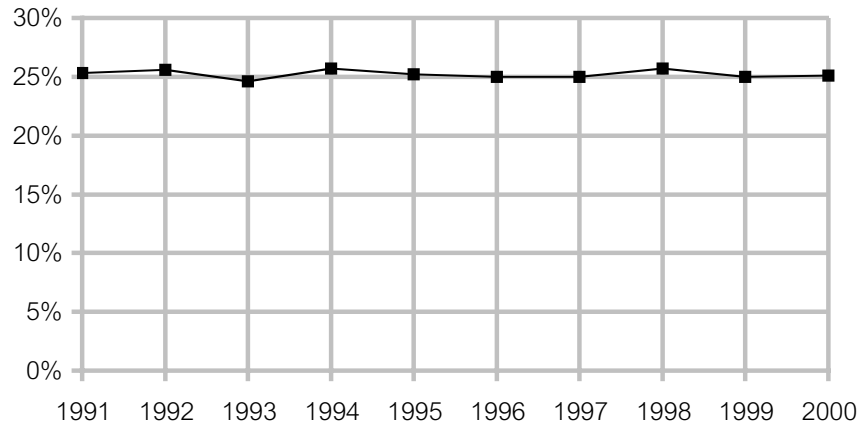
Injury rate (number of short-term disability claims per 100 person-years of WCB-covered employment) Includes the *Bill 63* industries for all years.



Fatality rate (number of accepted fatal claims per 100 person-years of WCB-covered employment) Includes the *Bill 63* industries for all years.

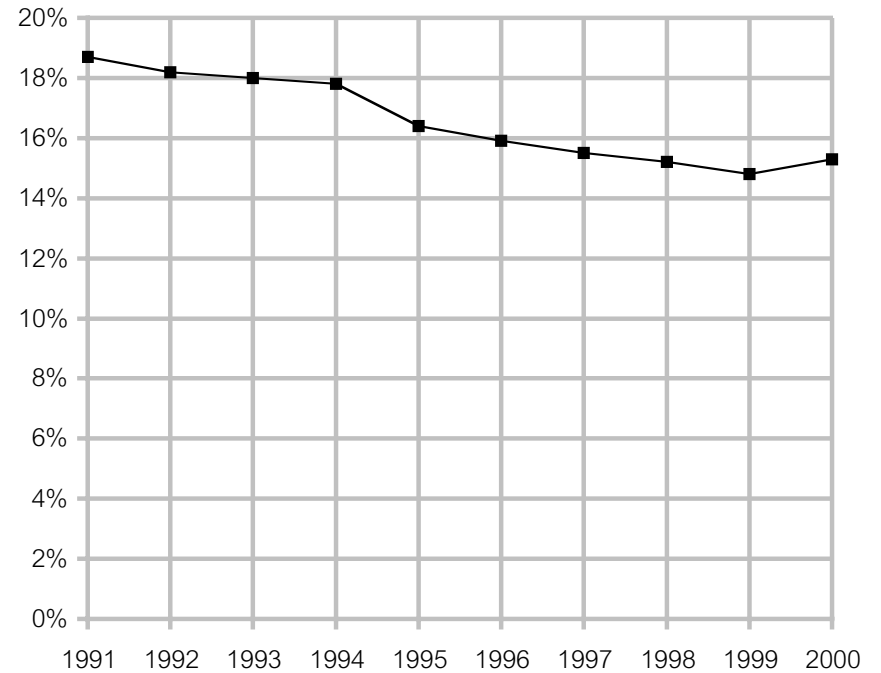


Percentage of claimants with back strains



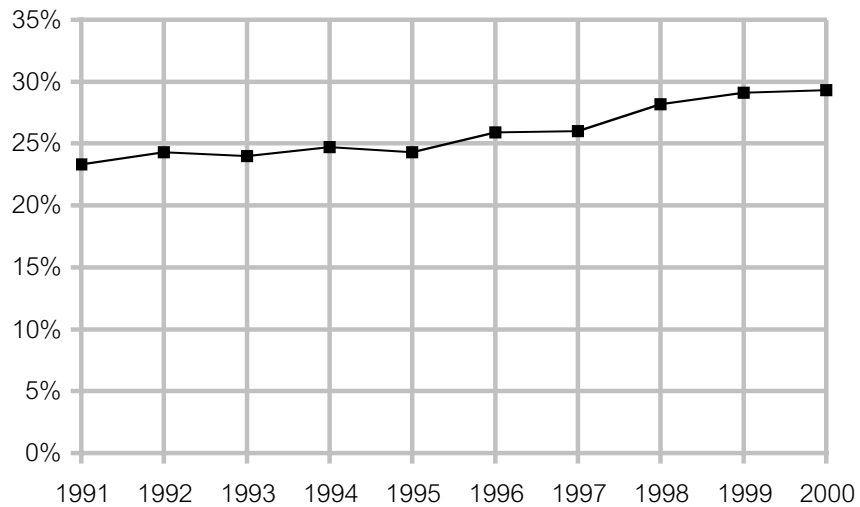
Based on claimants receiving a first payment of short-term disability or long-term disability benefits in these years

Percentage of claimants less than 25 years old



Based on claimants receiving a first payment of short-term disability or long-term disability benefits in these years

Percentage of claimants who are women



Based on claimants receiving a first payment of short-term disability or long-term disability benefits in these years

Days Lost From Work

There were 3,491,934 days lost from work during 2000 due to occupational injuries and diseases. The “days lost” in 2000 are the days paid in 2000 on current year and prior years’ injuries. Of the 3,491,394 days paid in 2000, 49.7 percent resulted from injuries and diseases that occurred in 2000, 26.9 percent resulted from injuries and diseases that occurred in 1999, and 23.4 percent resulted from injuries and diseases that occurred in 1998 and prior years.

The following is an analysis by sector and subsector of the days lost in the 1996–2000 period. The sectors and subsectors are described in “Classes of Industry” on page 53.

Sector/ Subsector	Description	Days Lost in the Year on Claims from All Years						Percent, 1996–2000
		1996	1997	1998	1999	2000	1996–2000	
Sector 70 — Primary Resources								
7010	Agriculture	34,700	43,400	51,600	49,200	44,900	223,800	1.4%
7020	Fishing	32,200	35,100	30,300	31,900	30,300	159,800	1.0%
7030	Forestry	158,100	175,300	153,600	148,900	164,100	800,000	4.9%
7040	Oil and Gas or Mineral Resources	44,800	44,100	46,500	44,000	40,100	219,500	1.4%
	Total	269,700	298,000	282,000	274,000	279,400	1,403,100	8.6%
Sector 71 — Manufacturing								
7110	Food and Beverage Products	83,600	90,700	109,100	114,900	112,900	511,200	3.1%
7120	Metal and Non-metallic Mineral Products	130,000	142,500	154,700	175,500	157,900	760,700	4.7%
7130	Petroleum, Coal, Rubber, Plastic, and Chemical Products	24,800	29,900	33,100	35,400	40,300	163,500	1.0%
7140	Wood and Paper Products	212,300	227,100	235,400	234,900	250,700	1,160,300	7.1%
7150	Other Products	27,300	31,900	41,700	43,700	44,200	188,700	1.2%
	Total	478,000	522,100	574,000	604,400	606,000	2,784,500	17.1%
Sector 72 — Construction								
7210	General Construction	339,800	361,600	372,900	356,900	357,000	1,788,200	11.0%
7220	Heavy Construction	6,900	9,100	9,800	8,100	11,100	45,100	0.3%
7230	Road Construction or Maintenance	30,600	32,500	38,100	37,100	37,600	176,000	1.1%
	Total	377,300	403,200	420,800	402,100	405,800	2,009,300	12.4%
Sector 73 — Transportation and Warehousing								
7310	Warehousing	12,400	14,800	18,700	21,600	23,200	90,600	0.6%
7320	Transportation and Related Services	281,500	284,200	314,100	332,800	324,500	1,537,100	9.5%
	Total	293,900	298,900	332,700	354,400	347,700	1,627,600	10.0%

Sector/ Subsector	Description	Days Lost in the Year on Claims from All Years					1996–2000	Percent, 1996–2000
		1996	1997	1998	1999	2000		
Sector 74 — Trade								
7410	Retail	198,300	208,300	235,700	255,400	254,800	1,152,600	7.1%
7420	Wholesale	51,000	55,200	61,700	69,200	54,100	291,300	1.8%
	Total	249,300	263,600	297,500	324,600	309,000	1,443,900	8.9%
Sector 75 — Public Sector								
7530	Public Administration	73,700	75,200	84,700	87,300	91,700	412,700	2.5%
Sector 76 — Service Sector								
7610	Accommodation, Food, and Leisure Services	167,600	178,100	211,000	225,000	227,400	1,009,000	6.2%
7620	Business Services	19,100	24,700	29,000	33,800	32,800	139,400	0.9%
7630	Professional, Scientific, and Technical Services	25,700	30,200	33,500	38,500	33,100	161,000	1.0%
7640	Other Services	173,800	194,000	206,600	237,000	227,000	1,038,500	6.4%
7650	Education	55,300	60,900	72,800	82,300	79,400	350,600	2.2%
7660	Health Care and Social Assistance	256,700	300,100	386,300	455,400	445,300	1,843,800	11.4%
7670	Utilities	14,400	14,500	16,900	21,300	20,600	87,700	0.5%
	Total	712,700	802,500	956,100	1,093,300	1,065,500	4,630,100	28.5%
Sectors 81 to 84 — Deposit Accounts		108,900	105,900	97,400	128,800	137,600	578,500	3.6%
Section 39		278,300	212,200	272,700	337,500	249,300	1,349,900	8.3%
Other		300	-200	1,300	500	100	1,900	0.0%
TOTAL		2,842,111	2,981,280	3,319,300	3,606,932	3,491,934	16,241,557	100.0%

Percentage of Injuries by Gender of Worker

The first payment of short-term disability, long-term disability, or survivor benefits was made on 72,314 claims during the year 2000, an increase of 1.4 percent from the number made in 1999. Of these claimants, 71 percent were men and 29 percent were women.

Number of Claims and Claim Costs by Provincial Regional District^{1, 2} for 2000

Provincial Regional District		Number of Short-term Disability ³ , Long-term Disability ⁴ , and Fatal Claims First Paid in 2000	Short-term Disability ³ , Vocational Rehabilitation, Long-term Disability ⁴ , and Survivor Benefits Charged in 2000 ⁵ (Excludes Health Care Costs)
01	East Kootenay	980	\$21,302,000
02	Central Kootenay	840	\$8,772,000
02a	Kootenay-Boundary	380	\$7,668,000
03	Okanagan-Similkameen	1,030	\$14,804,000
04	Columbia-Shuswap	770	\$13,549,000
05	North Okanagan	1,290	\$15,564,000
06	Central Okanagan	2,530	\$15,739,000
07	Thompson-Nicola	1,650	\$20,852,000
08	Cariboo	790	\$13,108,000
09	Squamish-Lillooet	900	\$7,621,000
10	Fraser-Cheam	1,120	\$14,137,000
11	Central Fraser Valley	5,100	\$38,210,000
12	Dewdney-Alouette	1,570	\$18,728,000
13	Greater Vancouver	37,270	\$343,741,000
14	Sunshine Coast	290	\$6,339,000
15	Powell River	330	\$4,483,000
16	Mount Waddington	400	\$8,571,000
16a	Ocean Falls	50	\$456,000

Provincial Regional District		Number of Short-term Disability ³ , Long-term Disability ⁴ , and Fatal Claims First Paid in 2000	Short-term Disability ³ , Vocational Rehabilitation, Long-term Disability ⁴ , and Survivor Benefits Charged in 2000 ⁵ (Excludes Health Care Costs)
17	Skeena-Queen Charlotte	450	\$9,113,000
18	Kitimat-Stikine	640	\$19,954,000
19	Bulkley-Nechako	560	\$10,848,000
20	Fraser-Fort George	1,370	\$29,549,000
21	Peace River-Liard	760	\$12,721,000
22	Stikine	10	\$27,000
23	Capital	5,960	\$52,737,000
24	Cowichan Valley	1,040	\$15,724,000
25	Nanaimo	1,980	\$22,559,000
26	Alberni-Clayoquot	560	\$13,001,000
27	Comox-Strathcona	1,700	\$31,044,000
TOTAL⁶		72,314	\$790,921,175

¹ Some claims are classified according to the location of the head office of the firm rather than according to the actual location where the injury occurred.

² Claims uncoded at year-end have been allocated proportionately to the regional districts.

³ *Short-term disability* is the new term for what was called *wage loss* in 1991 and earlier versions of this table.

⁴ *Long-term disability claims* is the term for what were called *permanent disability claims* in 1991 and earlier versions of this table.

⁵ Includes capitalized values of pension awards, not monthly pension payments. These figures include the \$5,948,941 increase in survivor benefits arising from *Bill 63* and the 1997 B.C. Supreme Court Ruling. These claim costs are as charged in the year and, therefore, are on a different basis than the liabilities shown in Note 7 of the *WCB 2000 Annual Report*.

⁶ Due to rounding, the regional totals and the grand totals may not balance.

Number of Claims¹ First Paid in 2000 Analyzed by Subsector and Type of Claim²

Table A-1

Sector/ Subsector	Description ³	Health-care-only Claims ⁴	Short-term Disability Claims ⁵	Long-term Disability Claims ⁶	Fatal Claims	Overall Total
Sector 70 — Primary Resources						
7010	Agriculture	567	757	68	8	1,400
7020	Fishing	374	359	54	4	791
7030	Forestry	2,198	2,011	302	17	4,528
7040	Oil and Gas or Mineral Resources	1,074	316	103	8	1,501
	Total	4,213	3,443	527	37	8,220
Sector 71 — Manufacturing						
7110	Food and Beverage Products	1,386	2,660	120	0	4,166
7120	Metal and Non-metallic Mineral Products	4,912	4,448	286	14	9,660
7130	Petroleum, Coal, Rubber, Plastic, and Chemical Products	1,014	1,102	41	1	2,158
7140	Wood and Paper Products	8,422	4,347	582	6	13,357
7150	Other Products	1,288	1,430	57	1	2,776
	Total	17,022	13,987	1,086	22	32,117
Sector 72 — Construction						
7210	General Construction	6,980	5,707	555	30	13,272
7220	Heavy Construction	325	232	20	0	577
7230	Road Construction or Maintenance	517	468	43	1	1,029
	Total	7,822	6,407	618	31	14,878

Sector/ Subsector	Description ³	Health-care-only Claims ⁴	Short-term Disability Claims ⁵	Long-term Disability Claims ⁶	Fatal Claims	Overall Total
Sector 73 — Transportation and Warehousing						
7310	Warehousing	357	671	14	0	1,042
7320	Transportation and Related Services	3,194	5,533	325	36	9,088
	Total	3,551	6,204	339	36	10,130
Sector 74 — Trade						
7410	Retail	6,056	6,476	160	3	12,695
7420	Wholesale	1,292	1,587	51	3	2,933
	Total	7,348	8,063	211	6	15,628
Sector 75 — Public Sector						
7530	Public Administration	2,032	2,673	102	3	4,810
Sector 76 — Service Sector						
7610	Accommodation, Food, and Leisure Services	6,461	6,518	156	6	13,141
7620	Business Services	743	710	23	0	1,476
7630	Professional, Scientific, and Technical Services	1,159	873	32	3	2,067
7640	Other Services	5,410	5,278	265	5	10,958
7650	Education	2,341	2,318	69	0	4,728
7660	Health Care and Social Assistance	5,542	8,184	159	0	13,885
7670	Utilities	641	422	40	1	1,104
	Total	22,297	24,303	744	15	47,359

Sector/ Subsector	Description ³	Health-care-only Claims ⁴	Short-term Disability Claims ⁵	Long-term Disability Claims ⁶	Fatal Claims	Overall Total
Sectors 81 to 84 — Deposit Accounts						
8108	Canadian Pacific Ltd. and Associated Companies	778	814	41	5	1,638
8110	Federal Government	732	88	40	1	861
8209	Burlington Northern Inc.	5	3	0	0	8
8310	Canadian National Railways, Via Rail, Air Canada	266	323	15	0	604
8411	Government of the Province of B.C.	1,633	2,053	71	0	3,757
	Total	3,414	3,281	167	6	6,868
Section 39						
39(1)(d)	Disaster Reserves	0	8	0	0	8
39(1)(e)	Enhancement Reserves	0	4	1	0	5
	Total	0	12	1	0	13
Other⁷		7	-11	1	0	-3
GRAND TOTAL		67,706	68,362	3,796	156	140,020

¹ Claims can be reported in one year and paid in the next; some of the paid claims in this table, therefore, are not part of the total of claims reported in the Reported Claims table.

² Claims can change “Type” categories from one year to the next. The claim counts by type are, therefore, adjusted in order that claims aren’t double counted. For example, if a claim counted this year as a short-term disability claim in Table A-1 becomes a long-term disability claim next year, a count would be added to next year’s long-term disability count and subtracted from next year’s short-term disability count. The count of short-term disability claims in Table A-1 can, therefore, be thought of as being the number of claims that get short-term disability benefits but don’t go on to get long-term disability or survivor benefits. Similar adjustments are made for changes between other type categories.

³ For a complete description of the subsector numbers, see “Classes of Industry” on page 53.

⁴ *Health-care-only claims* is the term for what were called *medical-aid-only claims* in 1991 and earlier versions of this table.

⁵ *Short-term disability claims* is the term for what were called *temporary total claims* in 1991 and earlier versions of this table.

⁶ *Long-term disability claims* is the term for what were called *permanent disability claims* in 1991 and earlier versions of this table.

⁷ Includes claims uncoded to subsector at year-end.

Number of Claims First Paid in 1991–2000 Analyzed by Type of Claim

**Table A-1 — Historical
by Claim Type**

Year First Paid	Health-care-only Claims ¹	Short-term Disability Claims ²	Long-term Disability Claims ³	Fatal Claims	Overall Total
1991	68,614	77,664	3,431	141	149,850
1992	66,510	77,274	3,583	146	147,513
1993	56,186	75,601	3,778	124	135,689
1994	59,297	77,108	4,228	152	140,785
1995	68,823	73,762	4,504	134	147,223
1996	71,438	69,021	4,667	152	145,278
1997	73,020	70,745	4,215	164	148,144
1998	71,585	69,431	3,239	125	144,380
1999	65,398	68,671	2,525	147	136,741
2000	67,706	68,362	3,796	156	140,020
1991–2000	668,577	727,639	37,966	1,441	1,435,623

¹ *Health-care-only claims* is the term for what were called *medical-aid-only claims* in 1991 and earlier versions of this table.

² *Short-term disability claims* is the term for what were called *temporary total claims* in 1991 and earlier versions of this table.

³ *Long-term disability claims* is the term for what were called *permanent disability claims* in 1991 and earlier versions of this table.

**Total of Health-care-only, Short-term Disability, Long-term Disability,
and Fatal Claims First Paid in the Year, by Subsector, for 1999 and 2000**

**Table A-1 —
Historical by Subsector**

Sector/ Subsector	Description ¹	Health-care-only Claims		STD/LTD/Fatal Claims		Total	
		1999	2000	1999	2000	1999	2000
Sector 70 — Primary Resources							
7010	Agriculture	572	567	770	833	1,342	1,400
7020	Fishing	382	374	398	417	780	791
7030	Forestry	2,261	2,198	2,251	2,330	4,512	4,528
7040	Oil and Gas or Mineral Resources	1,021	1,074	430	427	1,451	1,501
	Total	4,236	4,213	3,849	4,007	8,085	8,220
Sector 71 — Manufacturing							
7110	Food and Beverage Products	1,507	1,386	2,919	2,780	4,426	4,166
7120	Metal and Non-metallic Mineral Products	4,776	4,912	4,677	4,748	9,453	9,660
7130	Petroleum, Coal, Rubber, Plastic, and Chemical Products	937	1,014	1,063	1,144	2,000	2,158
7140	Wood and Paper Products	8,275	8,422	4,938	4,935	13,213	13,357
7150	Other Products	1,130	1,288	1,356	1,488	2,486	2,776
	Total	16,625	17,022	14,953	15,095	31,578	32,117
Sector 72 — Construction							
7210	General Construction	6,635	6,980	6,119	6,292	12,754	13,272
7220	Heavy Construction	124	325	65	252	189	577
7230	Road Construction or Maintenance	616	517	540	512	1,156	1,029
	Total	7,375	7,822	6,724	7,056	14,099	14,878

Sector/ Subsector	Description ¹	Health-care-only Claims		STD/LTD/Fatal Claims		Total	
		1999	2000	1999	2000	1999	2000
Sector 73 — Transportation and Warehousing							
7310	Warehousing	305	357	631	685	936	1,042
7320	Transportation and Related Services	3,322	3,194	6,072	5,894	9,394	9,088
	Total	3,627	3,551	6,703	6,579	10,330	10,130
Sector 74 — Trade							
7410	Retail	5,212	6,056	5,985	6,639	11,197	12,695
7420	Wholesale	1,470	1,292	2,005	1,641	3,475	2,933
	Total	6,682	7,348	7,990	8,280	14,672	15,628
Sector 75 — Public Sector							
7530	Public Administration	2,020	2,032	2,869	2,778	4,889	4,810
Sector 76 — Service Sector							
7610	Accommodation, Food, and Leisure Services	6,320	6,461	6,659	6,680	12,979	13,141
7620	Business Services	723	743	674	733	1,397	1,476
7630	Professional, Scientific, and Technical Services	1,024	1,159	859	908	1,883	2,067
7640	Other Services	5,236	5,410	5,573	5,548	10,809	10,958
7650	Education	2,235	2,341	2,387	2,387	4,622	4,728
7660	Health Care and Social Assistance	5,343	5,542	8,087	8,343	13,430	13,885
7670	Utilities	578	641	503	463	1,081	1,104
	Total	21,459	22,297	24,742	25,062	46,201	47,359

Sector/ Subsector	Description ¹	Health-care-only Claims		STD/LTD/Fatal Claims		Total	
		1999	2000	1999	2000	1999	2000
Sectors 81 to 84 — Deposit Accounts							
8108	Canadian Pacific Ltd. and Associated Companies	802	778	942	860	1,744	1,638
8110	Federal Government	724	732	120	129	844	861
8209	Burlington Northern Inc.	4	5	0	3	4	8
8310	Canadian National Railways, Via Rail, Air Canada	267	266	303	338	570	604
8411	Government of the Province of B.C.	1,563	1,633	2,117	2,124	3,680	3,757
	Total	3,360	3,414	3,482	3,454	6,842	6,868
Section 39							
39(1)(d)	Disaster Reserves	0	0	0	8	0	8
39(1)(e)	Enhancement Reserves	1	0	0	5	1	5
	Total	1	0	0	13	1	13
Other²		13	7	31	-10	44	-3
GRAND TOTAL		65,398	67,706	71,343	72,314	136,741	140,020

¹ For a complete description of the subsector numbers, see "Classes of Industry" on page 53.

² Includes claims first paid in 1999 and 2000 that were uncoded to subsector at year-end.

Number of Claims Accepted for Fatal Benefits by Subsector and Year Accepted¹

Table A-1 — Number of Fatalities

Sector/ Subsector	Description ²	Year Accepted for Fatal Benefits										1991– 2000
		1991	1992	1993	1994	1995	1996	1997	1998	1999	2000	
Sector 70 — Primary Resources												
7010	Agriculture	3	4	3	6	7	4	5	1	3	8	44
7020	Fishing	4	3	9	9	10	4	2	7	2	4	54
7030	Forestry	16	17	23	21	18	27	23	14	17	17	193
7040	Oil and Gas or Mineral Resources	18	13	7	12	10	4	8	8	7	8	95
	Total	41	37	42	48	45	39	38	30	29	37	386
Sector 71 — Manufacturing												
7110	Food and Beverage Products	0	0	0	1	1	0	1	1	1	0	5
7120	Metal and Non-metallic Mineral Products	10	24	10	10	11	11	12	10	21	14	133
7130	Petroleum, Coal, Rubber, Plastic, and Chemical Products	0	0	0	1	0	1	0	1	1	1	5
7140	Wood and Paper Products	6	10	2	8	10	7	10	7	6	6	72
7150	Other Products	0	1	0	0	1	0	1	0	0	1	4
	Total	16	35	12	20	23	19	24	19	29	22	219
Sector 72 — Construction												
7210	General Construction	20	24	15	18	17	22	20	15	27	30	208
7220	Heavy Construction	2	0	0	0	0	0	4	3	1	0	10
7230	Road Construction or Maintenance	1	3	3	4	4	4	6	3	2	1	31
	Total	23	27	18	22	21	26	30	21	30	31	249

Sector/ Subsector	Description ²	Year Accepted for Fatal Benefits										1991– 2000
		1991	1992	1993	1994	1995	1996	1997	1998	1999	2000	
Sector 73 — Transportation and Warehousing												
7310	Warehousing	0	0	0	0	1	2	1	1	1	0	6
7320	Transportation and Related Services	29	17	27	30	17	28	27	12	25	36	248
	Total	29	17	27	30	18	30	28	13	26	36	254
Sector 74 — Trade												
7410	Retail	3	2	1	4	0	1	2	2	0	3	18
7420	Wholesale	1	5	0	3	0	1	1	4	2	3	20
	Total	4	7	1	7	0	2	3	6	2	6	38
Sector 75 — Public Sector												
7530	Public Administration	1	3	1	5	2	7	7	4	2	3	35
Sector 76 — Service Sector												
7610	Accommodation, Food, and Leisure Services	5	3	7	2	6	6	4	5	3	6	47
7620	Business Services	2	1	0	2	0	0	2	2	3	0	12
7630	Professional, Scientific, and Technical Services	2	0	1	0	1	4	1	3	3	3	18
7640	Other Services	11	6	2	7	6	9	11	6	9	5	72
7650	Education	1	0	1	2	1	0	3	1	1	0	10
7660	Health Care and Social Assistance	0	2	1	2	3	1	0	4	0	0	13
7670	Utilities	0	0	2	0	0	2	3	1	2	1	11
	Total	21	12	14	15	17	22	24	22	21	15	183

Sector/ Subsector	Description ²	Year Accepted for Fatal Benefits										1991– 2000
		1991	1992	1993	1994	1995	1996	1997	1998	1999	2000	
Sectors 81 to 84 — Deposit Accounts												
8108	Canadian Pacific Ltd. and Assoc. Companies	1	2	1	2	3	1	4	6	2	5	27
8110	Federal Government	2	0	0	2	1	0	0	2	1	1	9
8209	Burlington Northern Inc.	0	0	0	0	0	0	0	0	0	0	0
8310	Canadian National Railways, Via Rail, Air Canada	1	2	0	0	0	1	3	0	0	0	7
8411	Government of the Province of B.C.	0	3	6	0	3	3	3	1	5	0	24
	Total	4	7	7	4	7	5	10	9	8	6	67
Section 39												
39(1)(d)	Disaster Reserves	2	1	1	1	1	0	0	0	0	0	6
39(1)(e)	Enhancement Reserves	0	0	1	0	0	0	0	1	0	0	2
	Total	2	1	2	1	1	0	0	1	0	0	8
Other³		0	0	0	0	0	2	0	0	0	0	2
GRAND TOTAL		141	146	124	152	134	152	164	125	147	156	1,441

¹ Some claims accepted for fatal benefits have been previously accepted for long-term disability benefits. An example of claims in this category are disease claims like silicosis.

² Descriptions of the sectors and subsectors are in "Classes of Industry" on page 53.

³ One of these two fatalities involved carcinogenic exposure in more than one subsector. The other occurred to a worker on a training course while on WCB benefits for another injury.

Claims Accepted for Fatal Benefits in 2000¹

Table A-1 — Fatality Descriptions

Subsector	Description ²	Year of Death	Occupation	Age ³	What Happened
7010	Agriculture	2000	Electrician	57	Fell 19 feet from top of digester tank.
7010	Agriculture	1999	Berry Picker	60	Worker collapsed. Possible heart attack.
7010	Agriculture	1999	Ranch Hand	61	Thrown from horse.
7010	Agriculture	1996	Salad Picker	32	Motor vehicle accident. Vehicle struck tree and overturned.
7010	Agriculture	2000	Farm Worker	27	Motor vehicle accident. Head-on collision.
7010	Agriculture	2000	Ranch Worker	28	Murdered.
7010	Agriculture	1998	Rancher	72	Knocked off truck bed by a bull.
7010	Agriculture	2000	Labourer	62	Exposure to sunlight over several years. Malignant melanoma.
7020	Fishing	2000	Fisher	36	Worker fell and struck head.
7020	Fishing	2000	Fisher	39	Struck on head by swinging boom and block.
7020	Fishing	2000	Fisher	45	Worker went to assist co-worker who had fallen into water. Worker drowned.
7020	Fishing	2000	Fisher	25	Worker fell off boat and was caught in propellers.
7030	Forestry	2000	Landing Bucker	38	Run over by a loader.
7030	Forestry	1999	Chaser	43	Log rolled and pinned worker against stump.
7030	Forestry	2000	Landing Bucker	52	Struck by a log.
7030	Forestry	2000	Hook Tender	26	Log dislodged from a choker and rolled over worker.
7030	Forestry	2000	Faller	42	Struck by a falling tree.
7030	Forestry	1997	Unknown	40	Snowmobile went through ice on lake.
7030	Forestry	2000	Contractor	53	Motor vehicle accident. Vehicle overturned.

Subsector	Description ²	Year of Death	Occupation	Age ³	What Happened
7030	Forestry	2000	Logger	57	Motor vehicle accident. Worker thrown from vehicle.
7030	Forestry	2000	Mechanic	51	Worker was crushed between a forklift and the back of a truck.
7030	Forestry	2000	Faller	57	Snag fell and struck worker.
7030	Forestry	2000	Faller	53	Struck in head and chest by log being bucked.
7030	Forestry	2000	Faller	40	Struck by branch of tree being felled.
7030	Forestry	2000	Faller	54	Struck on head by a tree limb.
7030	Forestry	2000	Faller	52	Struck by a snag.
7030	Forestry	2000	Faller	28	Struck by tree fallen by co-worker.
7030	Forestry	2000	Faller	75	Worker was falling a tree when a snag struck him.
7030	Forestry	2000	Foreperson	27	Motor vehicle accident. Truck overturned.
7040	Oil and Gas or Mineral Resources	2000	Supervisor	51	Motor vehicle accident. Worker's vehicle collided with logging truck.
7040	Oil and Gas or Mineral Resources	1999	Mill Repair	90	Silicosis.
7040	Oil and Gas or Mineral Resources	2000	Miner	68	Silicosis.
7040	Oil and Gas or Mineral Resources	2000	Miner	87	Silicosis.
7040	Oil and Gas or Mineral Resources	1999	Miner	86	Silicosis.
7040	Oil and Gas or Mineral Resources	2000	Air Track Operator	75	Silicosis.
7040	Oil and Gas or Mineral Resources	2000	Mill Operator	66	Exposure to asbestos. Mesothelioma.
7040	Oil and Gas or Mineral Resources	2000	Supervisor	63	Machine went through ice, trapping worker underneath.
7120	Metal/Non-metallic Mineral Products	1998	Executive	46	Plane crash.
7120	Metal/Non-metallic Mineral Products	2000	Engineer	80	Exposure to asbestos. Mesothelioma.

Subsector	Description ²	Year of Death	Occupation	Age ³	What Happened
7120	Metal/Non-metallic Mineral Products	1999	Sandblaster	41	Worker passed out at work due to heat exhaustion. Fell and struck head. Cause of death: head injuries.
7120	Metal/Non-metallic Mineral Products	2000	Sheet Metal	77	Exposure to asbestos. Mesothelioma.
7120	Metal/Non-metallic Mineral Products	2000	Ship Builder	82	Exposure to asbestos. Asbestosis.
7120	Metal/Non-metallic Mineral Products	2000	Electrician	84	Exposure to asbestos. Asbestosis.
7120	Metal/Non-metallic Mineral Products	1998	Joiner	57	Exposure to asbestos. Mesothelioma.
7120	Metal/Non-metallic Mineral Products	2000	Pipelayer	69	Exposure to asbestos. Mesothelioma.
7120	Metal/Non-metallic Mineral Products	1994	Plumber	67	Exposure to asbestos. Lung cancer.
7120	Metal/Non-metallic Mineral Products	2000	Owner	35	Crushed in a compactor.
7120	Metal/Non-metallic Mineral Products	1999	Sheet Metal Worker	84	Exposure to asbestos. Mesothelioma.
7120	Metal/Non-metallic Mineral Products	1999	Plant Worker	69	Exposure to chemicals at plant. Cancer.
7120	Metal/Non-metallic Mineral Products	2000	Smelterman	76	Exposure to toxic substances at work. Bladder cancer.
7120	Metal/Non-metallic Mineral Products	1999	Labourer	51	Worker was pulled into take-up end of machine.
7130	Petroleum, Coal, Rubber, Plastic, and Chemical Products	2000	Truck Driver	47	Motor vehicle accident. Truck ran off road.
7140	Wood and Paper Products	1994	Engineer	55	Exposure to benzene in laboratory. Leukemia.
7140	Wood and Paper Products	2000	Technician	71	Exposure to asbestos at work. Mesothelioma.
7140	Wood and Paper Products	1999	Dip Driver	56	Worker witnessed a fatal accident at work. Cause of death: heart attack.
7140	Wood and Paper Products	1999	Mill Worker	59	Fell 20 feet in dry kiln, resulting in paraplegia. Subsequently died from a ruptured aorta aneurysm.
7140	Wood and Paper Products	1999	Boomman	79	Worker suffered an asthma attack.

Subsector	Description ²	Year of Death	Occupation	Age ³	What Happened
7140	Wood and Paper Products	1999	Saw Filer	62	Exposure to metal dust.
7150	Other Products	2000	Electrician	56	Exposure to asbestos. Mesothelioma.
7210	General Construction	1997	Insulator	n/a	Exposure to asbestos. Mesothelioma.
7210	General Construction	2000	Driller	18	Worker crushed by collapsing crane.
7210	General Construction	2000	Drywaller	63	Exposure to asbestos. Mesothelioma.
7210	General Construction	1999	Electrician	68	Exposure to asbestos. Mesothelioma.
7210	General Construction	2000	Electrician	64	Exposure to asbestos. Mesothelioma.
7210	General Construction	2000	Electrician	64	Stack of drywall tipped over, throwing worker off unguarded mezzanine. Worker fell 10 feet to floor.
7210	General Construction	1999	Carpenter	40	Suffered heat stroke while packing lumber.
7210	General Construction	1997	Carpenter	49	Scaffold collapsed and worker fell.
7210	General Construction	2000	Contractor	37	Single motor vehicle accident.
7210	General Construction	1999	Labourer	62	Manually raising a framed wall when it fell and crushed worker.
7210	General Construction	2000	Insulator	69	Exposure to asbestos. Mesothelioma.
7210	General Construction	2000	Carpenter	76	Working with sheet asbestos. Mesothelioma.
7210	General Construction	2000	Owner	50	Worker was repairing truck transmission when vehicle rolled and crushed him.
7210	General Construction	1999	Sheet Metal Worker	64	Exposure to asbestos dust and fibres. Asbestosis.
7210	General Construction	2000	Sheet Metal Worker	60	Exposure to asbestos. Mesothelioma.
7210	General Construction	2000	Swamper	36	Motor vehicle accident. Worker was driving pickup truck when it collided with a log truck.
7210	General Construction	2000	Plumber	71	Exposure to asbestos. Mesothelioma.

Subsector	Description ²	Year of Death	Occupation	Age ³	What Happened
7210	General Construction	2000	Steam Fitter	67	Exposure to asbestos. Asbestosis.
7210	General Construction	2000	Sheet Metal Worker	67	Exposure to asbestos. Asbestosis.
7210	General Construction	2000	Plumber	79	Exposure to asbestos. Asbestosis.
7210	General Construction	2000	Pipefitter	68	Exposure to asbestos. Mesothelioma.
7210	General Construction	2000	Technician	72	Worker fell from scissor lift.
7210	General Construction	2000	Fabricator	49	Worker dropped an aluminum beam on his leg. Subsequently died from a pulmonary embolism.
7210	General Construction	1999	Carpenter	77	Fell from scaffold, sustaining a head injury. Subsequently died from pneumonia.
7210	General Construction	2000	Carpenter	76	Fell 18 feet through hole in scaffold.
7210	General Construction	2000	Labourer	66	Exposure to asbestos. Mesothelioma.
7210	General Construction	2000	Lead Hand	35	Piece of steel struck worker on head, causing him to fall 20 feet to ground.
7210	General Construction	2000	Machinist	73	Steel plate fell on worker's head, resulting in paraplegia. Subsequently died from pneumonia.
7210	General Construction	2000	Welder	70	Exposure to toxic substances, including asbestos. Mesothelioma.
7210	General Construction	2000	Pipefitter	58	Exposure to asbestos. Mesothelioma.
7230	Road Construction or Maintenance	2000	Truck Driver	18	Motor vehicle accident. Truck overturned.
7320	Transportation and Related	2000	Heli-Pilot Instructor	26	Worker was training a student in a helicopter when it crashed.
7320	Transportation and Related	2000	Engineer	59	Exposure to asbestos while working on board ships. Mesothelioma.
7320	Transportation and Related	1999	Mate	50	Worker fell off barge and struck head.
7320	Transportation and Related	2000	Tankerman	72	Fell from ladder and struck head, then fell into water.

Subsector	Description ²	Year of Death	Occupation	Age ³	What Happened
7320	Transportation and Related	2000	Courier	24	Motor vehicle accident. Head-on collision.
7320	Transportation and Related	2000	Truck Driver	53	Motor vehicle accident.
7320	Transportation and Related	1999	Pilot	60	Airplane crash.
7320	Transportation and Related	2000	Truck Driver	38	Crushed under bucket load.
7320	Transportation and Related	2000	Truck Driver	40	Single motor vehicle accident. Truck ran off road.
7320	Transportation and Related	2000	Truck Driver	38	Motor vehicle accident.
7320	Transportation and Related	2000	Driver	57	Slipped and fell to floor. Subsequently died from disease complications.
7320	Transportation and Related	2000	Truck Driver	42	Motor vehicle accident.
7320	Transportation and Related	1996	Truck Driver	48	Motor vehicle accident.
7320	Transportation and Related	2000	Truck Driver	67	Worker was cinching down a load of lumber and suffered a heart attack.
7320	Transportation and Related	1999	Truck Driver	44	Motor vehicle accident.
7320	Transportation and Related	2000	Truck Driver	29	Motor vehicle accident.
7320	Transportation and Related	2000	Truck Driver	47	Motor vehicle accident.
7320	Transportation and Related	2000	Truck Driver	57	Motor vehicle accident. Truck ran off road.
7320	Transportation and Related	2000	Truck Driver	35	Crushed between two large rollers while unloading truck.
7320	Transportation and Related	2000	Truck Driver	52	Single motor vehicle accident.
7320	Transportation and Related	2000	Truck Driver	52	Worker was a passenger in a truck involved in a motor vehicle accident.
7320	Transportation and Related	1999	Truck Driver	30	Single motor vehicle accident.
7320	Transportation and Related	2000	Truck Driver	26	Single motor vehicle accident.

Subsector	Description ²	Year of Death	Occupation	Age ³	What Happened
7320	Transportation and Related	2000	Truck Driver	47	Single motor vehicle accident.
7320	Transportation and Related	2000	Longshoreman	35	Struck by a forklift.
7320	Transportation and Related	2000	Pilot	28	Helicopter crash.
7320	Transportation and Related	1974	Electrician	31	Motor vehicle accident.
7320	Transportation and Related	2000	Pilot Car Driver	66	Involved in motor vehicle accident.
7320	Transportation and Related	2000	Longshoreman	62	Exposure to asbestos. Mesothelioma.
7320	Transportation and Related	2000	Seaman	78	Exposure to asbestos. Mesothelioma.
7320	Transportation and Related	2000	Helicopter Pilot	30	Helicopter crash.
7320	Transportation and Related	2000	Truck Driver	57	Worker was repairing a truck when it fell on him.
7320	Transportation and Related	2000	Truck Driver	36	Single motor vehicle accident. Truck overturned.
7320	Transportation and Related	1998	Truck Driver	47	Motor vehicle accident.
7320	Transportation and Related	2000	Truck Driver	32	Motor vehicle accident. Vehicle ran off road.
7320	Transportation and Related	2000	Truck Driver	52	Motor vehicle accident. Loaded log truck went out of control.
7410	Retail	2000	Mechanic	68	Myelodysplastic syndrome.
7410	Retail	2000	Crane Operator	44	Crane rigging contacted power line. Electrocuted.
7410	Retail	2000	Truck Driver	36	Caught between two semi-trailers.
7420	Wholesale	2000	Delivery	20	Motor vehicle accident. Slid into oncoming traffic.
7420	Wholesale	2000	Truck Driver	46	Crushed between a mobile crane and a flat deck truck.
7420	Wholesale	2000	Forklift Operator	42	Caught between forklift and two pallets of tile.
7530	Public Administration	2000	Policeman	36	Motor vehicle accident while on motorbike.
7530	Public Administration	1999	Firefighter	60	Heart attack.

Subsector	Description ²	Year of Death	Occupation	Age ³	What Happened
7530	Public Administration	1994	Firefighter	43	Exposure to toxic chemicals. Cancer.
7610	Accommodation, Food, and Leisure Services	2000	Maintenance	45	Single motor vehicle accident.
7610	Accommodation, Food, and Leisure Services	2000	Unknown	18	Motor vehicle accident.
7610	Accommodation, Food, and Leisure Services	2000	Guide	75	Attacked by bear while on hunting trip.
7610	Accommodation, Food, and Leisure Services	2000	Manager	39	Murdered while trying to protect employee from assailant.
7610	Accommodation, Food, and Leisure Services	2000	Instructor	40	Worker was on hang glider that blew into power lines and then fell to ground.
7610	Accommodation, Food, and Leisure Services	1999	Owner	63	Single motor vehicle accident.
7630	Professional, Scientific, and Technical Services	1999	Supervisor	44	Single motor vehicle accident. Vehicle ran off road into ditch.
7630	Professional, Scientific, and Technical Services	1999	Special Effects	41	Worker suffered an allergy induced asthma attack.
7630	Professional, Scientific, and Technical Services	2000	Camera Assistant	37	Helicopter crash.
7640	Other Services	2000	Accountant	32	Motor vehicle accident.
7640	Other Services	2000	Mechanic	57	Exposure to asbestos. Mesothelioma.
7640	Other Services	2000	Welder	29	Crushed by a falling metal fish ladder that was being repaired.
7640	Other Services	1999	Secretary	48	Murdered while working at home.
7640	Other Services	2000	Window Cleaner	20	Worker fell 23 storeys.

Subsector	Description ²	Year of Death	Occupation	Age ³	What Happened
7670	Utilities	1999	Dispatcher	63	Exposure to asbestos. Asbestosis.
8108	CP Ltd. and Assoc. Companies	2000	Railway Worker	55	Worker was switching track when a train backed over him.
8108	CP Ltd. and Assoc. Companies	2000	Miner	84	Silicosis.
8108	CP Ltd. and Assoc. Companies	2000	Miner	78	Silicosis.
8108	CP Ltd. and Assoc. Companies	2000	Millwright	53	Exposure to asbestos. Mesothelioma.
8108	CP Ltd. and Assoc. Companies	2000	Welder	76	Exposure to asbestos. Mesothelioma.
8110	Federal Government	1987	Firefighter	28	Worker took own life due to pain arising from a work-related back injury.
8411	Government of the Province of B.C.	1999	Heavy Duty Mechanic	57	Motor vehicle accident. Head-on collision.

¹ This table provides descriptions of the fatal claims accepted in 2000. There are 157 claims listed in this table. The count of fatal claims accepted in 2000 shown in Table A-1 is 156. The count of 156 reflects a -1 count arising from a claim disallowed in 2000 that had been accepted in 1999.

² For a complete description of the subsector number see "Classes of Industry" starting on page 53.

³ Age at time of death of worker.

Claim Costs Charged in 2000 by Subsector and Type of Claim (Claims From All Years)

Table A-2

Sector/ Subsector	Description ¹	Costs for Health-care-only Claims ²	Costs for Short-term Disability Claims (Includes Health Care and Rehab Costs) ³	Costs for Long-term Disability Claims (Includes Health Care and Rehab Costs) ⁴	Survivor Benefits (Includes Health Care and Rehab Costs) ⁵	Overall Total ⁶
Sector 70 — Primary Resources						
7010	Agriculture	176,491	3,856,478	4,137,634	1,874,192	10,044,796
7020	Fishing	197,743	3,370,710	6,077,729	1,333,383	10,979,565
7030	Forestry	1,051,386	27,364,714	44,069,941	5,645,226	78,131,267
7040	Oil and Gas or Mineral Resources	774,139	7,446,337	14,304,029	1,033,541	23,558,047
	Total	2,199,758	42,038,239	68,589,334	9,886,343	122,713,674
Sector 71 — Manufacturing						
7110	Food and Beverage Products	336,233	14,330,561	10,379,368	29,621	25,075,783
7120	Metal and Non-metallic Mineral Products	1,279,938	24,740,094	26,605,231	2,342,734	54,967,997
7130	Petroleum, Coal, Rubber, Plastic, and Chemical Products	206,822	5,153,724	3,610,067	455,373	9,425,985
7140	Wood and Paper Products	3,031,028	41,013,087	44,709,525	1,218,981	89,972,621
7150	Other Products	197,557	5,388,904	2,843,486	385,681	8,815,628
	Total	5,051,579	90,626,370	88,147,676	4,432,389	188,258,014
Sector 72 — Construction						
7210	General Construction	2,032,613	48,027,208	60,163,268	6,057,698	116,280,787
7220	Heavy Construction	115,508	1,807,007	3,780,423	-51,009	5,651,930
7230	Road Construction or Maintenance	224,124	5,694,696	7,413,941	-131,324	13,201,437
	Total	2,372,245	55,528,911	71,357,632	5,875,365	135,134,154
Sector 73 — Transportation and Warehousing						
7310	Warehousing	74,915	2,954,993	346,770	0	3,376,678
7320	Transportation and Related Services	1,022,806	42,864,214	32,590,986	10,236,897	86,714,904
	Total	1,097,721	45,819,208	32,937,756	10,236,897	90,091,582

Sector/ Subsector	Description ¹	Costs for Health-care-only Claims ²	Costs for Short-term Disability Claims (Includes Health Care and Rehab Costs) ³	Costs for Long-term Disability Claims (Includes Health Care and Rehab Costs) ⁴	Survivor Benefits (Includes Health Care and Rehab Costs) ⁵	Overall Total ⁶
Sector 74 — Trade						
7410	Retail	900,472	23,150,817	13,160,090	159,488	37,370,866
7420	Wholesale	234,931	7,085,848	5,391,809	162,201	12,874,789
	Total	1,135,403	30,236,664	18,551,899	321,689	50,245,655
Sector 75 — Public Sector						
7530	Public Administration	491,786	13,263,705	8,093,185	1,902,282	23,750,959
Sector 76 — Service Sector						
7610	Accommodation, Food, and Leisure Services	994,634	19,077,771	12,281,323	449,030	32,802,757
7620	Business Services	149,155	4,150,516	2,520,128	0	6,819,799
7630	Professional, Scientific, and Technical Services	242,501	4,502,716	3,701,097	1,938,357	10,384,672
7640	Other Services	1,257,799	29,330,208	22,196,576	983,855	53,768,439
7650	Education	520,895	10,985,813	4,345,557	0	15,852,266
7660	Health Care and Social Assistance	884,996	50,887,646	12,879,666	-114,657	64,537,651
7670	Utilities	252,003	3,318,740	4,350,359	-9,636	7,911,466
	Total	4,301,983	122,253,411	62,274,707	3,246,949	192,077,049
Sectors 81 to 84 — Deposit Accounts						
8108	Canadian Pacific Ltd. and Associated Companies	354,772	4,638,606	3,561,224	612,836	9,167,437
8110	Federal Government	199,623	5,725,237	932,344	-34,754	6,822,449
8209	Burlington Northern Inc.	1,220	16,130	7,208	0	24,557
8310	Canadian National Railways, Via Rail, Air Canada	115,192	2,010,270	1,186,149	0	3,311,611
8411	Government of the Province of B.C.	405,914	11,445,741	6,396,326	212,053	18,460,034
	Total	1,076,721	23,835,983	12,083,250	790,134	37,786,089

Sector/ Subsector	Description ¹	Costs for Health-care-only Claims ²	Costs for Short-term Disability Claims (Includes Health Care and Rehab Costs) ³	Costs for Long-term Disability Claims (Includes Health Care and Rehab Costs) ⁴	Survivor Benefits (Includes Health Care and Rehab Costs) ⁵	Overall Total ⁶
Section 39						
39(1)(d)	Disaster Reserves	169	4,224	83,438	1,013,806	1,101,638
39(1)(e)	Enhancement Reserves	4,760	37,547,405	60,610,739	783,375	98,946,279
	Total	4,930	37,551,629	60,694,177	1,797,181	100,047,917
	Reinstatement of Widows' Benefits⁷	0	0	10,121	5,938,820	5,948,941
	Other Costs Including Investigation and Unclassified⁸	11,257,598	28,060,850	20,616,695	607,042	60,542,184
	GRAND TOTAL⁹	28,989,725	489,214,970	443,356,432	45,035,092	1,006,596,219

¹ For a complete description of the subsector number see "Classes of Industry" starting on page 53.

² *Health-care-only claims* is the term for what were called *medical-aid-only claims* in 1991 and earlier versions of this table.

³ *Short-term disability claims* is the term for what were called *temporary total claims* in 1991 and earlier versions of this table.

⁴ *Long-term disability claims* is the term for what were called *permanent disability claims* in 1991 and earlier versions of this table.

⁵ *Survivor benefits* is the term for what were called *costs for fatal claims* in 1991 and earlier versions of this table.

⁶ These claim costs are calculated on a different basis than the benefit liabilities shown in Note 7 of the *WCB 2000 Annual Report*.

⁷ These additional survivor benefits arose from the 1997 B.C. Supreme Court decision regarding the reinstatement of widows' benefits.

⁸ All rehab costs were included in "Other Costs" in 1997 and prior versions of this table. Since 1998, rehab costs are shown in this table in the subsector in which the costs were incurred.

⁹ Due to rounding, the sector and subsector totals may not balance.

Claim Costs Charged in 1991–2000 by Type of Claim (Claims From All Years)

Table A-2 — Historical

Year Charged	Costs for Health-care-only Claims ¹	Costs for Short-term Disability Claims (Includes Health Care and Rehab Costs) ²	Costs for Long-term Disability Claims (Includes Health Care and Rehab Costs) ³	Survivor Benefits (Includes Health Care and Rehab Costs) ⁴	Overall Total ⁵
1991	18,404,811	271,848,643	194,683,600	25,312,463	510,249,517
1992	17,429,397	317,380,386	275,464,846	29,676,473	639,951,102
1993 ⁶	18,400,564	353,310,938	323,353,200	115,971,993	811,036,695
1994 ⁶	21,654,142	389,798,863	305,746,516	52,088,831	769,288,352
1995	23,809,585	381,071,309	284,766,515	29,082,255	718,729,664
1996	22,663,943	337,821,750	334,398,947	38,863,587	733,748,227
1997 ⁶	21,526,708	362,578,037	344,990,402	410,040,756	1,139,135,903
1998 ⁶	24,223,632	428,957,755	353,314,271	34,747,392	841,243,049
1999 ⁶	27,294,245	479,294,467	366,217,345	36,712,963	909,519,021
2000 ⁶	28,989,725	489,214,970	443,356,432	45,035,092	1,006,596,219
1991–2000⁷	224,396,751	3,811,277,118	3,226,292,075	817,531,805	8,079,497,749

¹ *Health-care-only claims* is the term for what were called *medical-aid-only claims* in 1991 and earlier versions of this table.

² *Short-term disability claims* is the term for what were called *temporary total claims* in 1991 and earlier versions of this table.

³ *Long-term disability claims* is the term for what were called *permanent disability claims* in 1991 and earlier versions of this table.

⁴ *Survivor benefits* is the term for what were called *costs for fatal claims* in 1991 and earlier versions of this table.

⁵ These claim costs are calculated on a different basis than the benefit liabilities shown in Note 7 of the *WCB 2000 Annual Report*.

⁶ Survivor benefits in 1993, 1994, and 1997 to 2000 include the additional reserves required by *Bill 63* and the 1997 B.C. Supreme Court decision, both of which increased the benefit entitlement of dependants of deceased workers. These amounts were: 1993 — \$90,414,635, 1994 — \$15,555,606, 1997 — \$377,426,893, 1998 — \$3,843,658, 1999 — \$7,028,815, and 2000 — \$5,948,941. The overall totals minus these amounts for the five years are: 1993 — \$720,622,060, 1994 — \$753,732,746, 1997 — \$761,709,010, 1998 — \$837,399,393, 1999 — \$902,490,206, and 2000 — \$1,000,447,277.

⁷ Due to rounding, the subtotals and totals may not balance.

An Analysis by Subsector of the 72,314 Short-term Disability¹, Long-term Disability², and Fatal Claims First Paid in 2000 and an Analysis of the Number of Days Lost During 2000 on Claims for All Years

Table B-1

Short-term Disability, Long-term Disability, and Fatal Claims First Paid in 2000														
		Number of Claims by Type of Accident ³												
Sector/ Subsector	Description ⁴	Days Lost ⁵ in 2000 on Claims for All Years	Avg. Weekly Wage	No. of Claims	Struck Against	Struck By	Falls from Eleva- tion	Falls on Same Level	Caught In	Rubbed or Abraded	Over- exertion, Bodily Motion ⁶	Harmful Sub- stances	Trans- port- ation	Miscel- laneous
Sector 70 — Primary Resources														
7010	Agriculture	44,859	443	833	55	150	150	85	40	5	260	20	25	45
7020	Fishing	30,302		417	20	55	20	25	25	5	175	30	55	5
7030	Forestry	164,137	961	2,330	85	585	370	290	95	50	600	105	135	15
7040	Oil and Gas or Mineral Resources	40,086	821	427	15	55	50	20	20	10	155	45	45	10
	Total	279,384	778	4,007	175	845	590	420	180	70	1,190	200	260	75
Sector 71 — Manufacturing														
7110	Food and Beverage Products	112,901	632	2,780	190	395	175	250	180	15	1,335	125	95	20
7120	Metal and Non-metallic Mineral Products	157,896	771	4,748	345	960	270	225	350	315	1,835	385	55	10
7130	Petroleum, Coal, Rubber, Plastic, and Chemical Products	40,262	568	1,144	75	200	60	65	100	20	545	60	10	10
7140	Wood and Paper Products	250,678	678	4,935	510	860	320	260	515	90	2,065	210	85	20
7150	Other Products	44,211	561	1,488	135	325	120	70	80	25	660	45	20	10
	Total	605,948	679	15,095	1,255	2,740	945	870	1,225	465	6,440	825	265	70

Short-term Disability, Long-term Disability, and Fatal Claims First Paid in 2000

Sector/ Subsector	Description ⁴	Days Lost ⁵ in 2000 on Claims for All Years	Avg. Weekly Wage	No. of Claims	Number of Claims by Type of Accident ³									
					Struck Against	Struck By	Falls from Eleva- tion	Falls on Same Level	Caught In	Rubbed or Abraded	Over- exertion, Bodily Motion ⁶	Harmful Sub- stances	Trans- port- ation	Miscel- laneous
Sector 72 — Construction														
7210	General Construction	357,042	715	6,292	470	1,170	1,030	425	240	190	2,320	275	120	50
7220	Heavy Construction	11,119	891	252	20	45	30	15	20	10	90	10	10	0
7230	Road Construction or Maintenance	37,647	814	512	10	85	75	45	20	10	195	20	45	5
	Total	405,808	729	7,056	500	1,300	1,135	485	280	210	2,605	305	175	55
Sector 73 — Transportation and Warehousing														
7310	Warehousing	23,162	667	685	30	100	60	45	35	10	335	10	60	0
7320	Transportation and Related Services	324,491	778	5,894	245	575	820	495	175	60	2,405	150	830	140
	Total	347,653	763	6,579	275	675	880	540	210	70	2,740	160	890	140
Sector 74 — Trade														
7410	Retail	254,838	493	6,639	510	1,075	380	565	205	45	3,405	140	190	125
7420	Wholesale	54,128	614	1,641	100	145	245	125	50	10	845	30	80	10
	Total	308,966	514	8,280	610	1,220	625	690	255	55	4,250	170	270	135
Sector 75 — Public Sector														
7530	Public Administration	91,716	818	2,778	120	295	250	290	65	40	1,405	105	130	75

Short-term Disability, Long-term Disability, and Fatal Claims First Paid in 2000

Sector/ Subsector	Description ⁴	Days Lost ⁵ in 2000 on Claims for All Years	Avg. Weekly Wage	No. of Claims	Number of Claims by Type of Accident ³									
					Struck Against	Struck By	Falls from Eleva- tion	Falls on Same Level	Caught In	Rubbed or Abraded	Over- exertion, Bodily Motion ⁶	Harmful Sub- stances	Trans- port- ation	Miscel- laneous
Sector 76 — Service Sector														
7610	Accommodation, Food, and Leisure Services	227,352	414	6,680	570	1,275	430	1,040	105	40	2,140	795	105	180
7620	Business Services	32,820	674	733	40	60	70	85	25	0	300	15	75	65
7630	Professional, Scientific, and Technical Services	33,065	778	908	50	145	115	95	0	15	350	30	65	45
7640	Other Services	227,040	631	5,548	375	800	435	485	205	245	2,470	230	195	105
7650	Education	79,364	812	2,387	130	255	200	370	35	30	1200	90	25	50
7660	Health Care and Social Assistance	445,330	726	8,343	315	715	210	785	105	15	5,370	355	60	410
7670	Utilities	20,574	975	463	15	35	70	55	5	10	245	15	15	0
	Total	1,065,545	633	25,062	1,495	3,285	1,530	2,915	480	355	12,075	1,530	540	855
Sectors 81 to 84 — Deposit Accounts														
8108	Canadian Pacific Ltd. and Associated Companies	32,797	731	860	45	100	75	50	40	10	445	55	30	10
8110	Federal Government	11,667	649	129	15	10	15	15	0	0	65	5	5	0
8209	Burlington Northern Inc.	200		3	0	0	0	0	0	0	5	0	0	0
8310	Canadian National Railways, Via Rail, Air Canada	12,061	906	338	10	25	25	20	10	0	200	20	20	10
8411	Government of the Province of B.C.	80,829	810	2,124	100	155	105	180	30	25	1,150	90	120	170
	Total	137,554	788	3,454	170	290	220	265	80	35	1,865	170	175	190

Short-term Disability, Long-term Disability, and Fatal Claims First Paid in 2000

Sector/ Subsector	Description ⁴	Days Lost ⁵ in 2000 on Claims for All Years	Avg. Weekly Wage	No. of Claims	Number of Claims by Type of Accident ³									
					Struck Against	Struck By	Falls from Eleva- tion	Falls on Same Level	Caught In	Rubbed or Abraded	Over- exertion, Bodily Motion ⁶	Harmful Sub- stances	Trans- port- ation	Miscel- laneous
Section 39														
39(1)(d)	Disaster Reserves	26		8	0	0	0	0	0	0	0	0	0	10
39(1)(e)	Enhancement Reserves	249,271		5	0	0	0	0	0	0	5	0	0	0
	Total	249,297		13	0	0	0	0	0	0	5	0	0	10
Other⁷		63		-10	0	0	0	0	0	0	-10	0	0	0
GRAND TOTAL		3,491,934	673	72,314	4,600	10,650	6,175	6,475	2,775	1,300	32,565	3,465	2,705	1,605

¹ Short-term disability claims is the term for what were called *wage-loss claims* in 1991 and earlier versions of this table.

² Long-term disability claims is the term for what were called *permanent disability claims* in 1991 and earlier versions of this table.

³ Claim counts by type of accident have been adjusted for the effect of uncoded claims and therefore appear as rounded numbers.

⁴ The sectors and subsectors are described in "Classes of Industry" on page 53.

⁵ "Days lost" are as paid in the year on current and prior-year claims.

⁶ Overexertion and bodily motion incidents usually result in strains, tenosynovitis, and related conditions.

⁷ Includes claims uncoded to subsector at year-end.

Days Lost, Average Weekly Wage, Average Age, and Breakdown by Gender for Short-term Disability, Long-term Disability, and Fatal Claims, 1991–2000

Table B-1 — Historical¹

Year	Total Days Lost ² in the Year	Average Weekly Wage of Claimant ³	Average Age of Claimant ³	Number of Short-term Disability, Long-term Disability, and Fatal Claims First Paid in the Year, by Gender		
				Males ⁴	Females ⁴	Total
1991	2,727,318	587	35.4	62,280	18,950	81,236
1992	3,102,791	599	35.6	61,300	19,700	81,003
1993	3,271,064	614	35.8	60,400	19,105	79,503
1994	3,430,119	623	35.9	61,450	20,040	81,488
1995	3,211,740	646	36.4	59,480	18,920	78,400
1996	2,842,111	651	36.8	54,860	18,980	73,840
1997	2,981,280	653	37.0	55,480	19,645	75,124
1998	3,319,300	659	37.3	52,230	20,565	72,795
1999	3,606,932	665	37.6	50,285	21,060	71,343
2000	3,491,394	673	37.8	51,130	21,185	72,314

¹ This table gives a historical summary of selected statistics from Tables B-1 and D. Some figures for the years prior to 2000 have been revised.

² “Days lost” are as paid in the period on current and prior-year claims.

³ These statistics are based on short-term disability, long-term disability, and fatal claims first paid in the year. Health-care-only claims are not included.

⁴ The gender counts are rounded and, therefore, may not add up to the total.

Injury Rates and Claim Durations for Rateable Subsectors, 1996–2000

Table B-2

Subsector	Description	Injury Rate (Short-term Disability Claims ¹ per 100 Person-years ² of Employment)					Total Claim Duration ^{3,4} (Days per Claim)				
		1996	1997	1998	1999 ⁵	2000 ⁶	1996	1997	1998	1999	2000
7010	Agriculture	5	6	5	5	5	44	54	61	63	54
7020	Fishing ⁷						60	63	63	70	61
7030	Forestry	12	12	10	9	8	49	55	59	63	70
7040	Oil and Gas or Mineral Resources	4	4	4	3	3	61	63	74	80	78
7110	Food and Beverage Products	12	12	12	11	10	30	33	39	42	43
7120	Metal and Non-Metallic Mineral Products	12	11	11	10	10	26	29	32	38	36
7130	Petroleum, Coal, Rubber, Plastic, and Chemical Products	7	7	7	7	7	30	32	35	36	38
7140	Wood and Paper Products	7	7	6	6	6	40	45	51	54	53
7150	Other Products	5	4	4	4	4	26	30	36	37	34
7210	General Construction	9	9	9	8	8	45	48	53	57	58
7220	Heavy Construction ⁸	13	14	10	8	10	54	73	85	87	77
7230	Road Construction and Maintenance	6	6	5	5	5	49	53	69	71	76
7310	Warehousing	13	13	14	15	16	26	31	38	40	39
7320	Transportation and Related Services	11	11	10	10	9	48	48	53	59	59
7410	Retail	3	3	3	3	3	35	37	40	45	44
7420	Wholesale	4	4	3	3	3	27	30	33	35	31
7530	Public Administration	7	6	6	6	6	29	29	32	33	36
7610	Accommodation, Food, and Leisure Services	3	3	3	3	2	29	30	34	37	37
7620	Business Services ^{9,10}	0	0	0	0	0			49	57	51

Subsector	Description	Injury Rate (Short-term Disability Claims ¹ per 100 Person-years ² of Employment)					Total Claim Duration ^{3,4} (Days per Claim)				
		1996	1997	1998	1999 ⁵	2000 ⁶	1996	1997	1998	1999	2000
7630	Professional, Scientific, and Technical Services	1	1	1	1	1	34	35	39	49	41
7640	Other Services	5	5	5	5	5	34	36	39	46	44
7650	Education	2	2	2	2	2	28	30	35	39	38
7660	Health Care and Social Assistance	5	5	5	5	5	42	47	56	64	61
7670	Utilities	2	1	1	1	1	29	31	37	44	50
All Subsectors¹¹		4.6	4.5	4.3	4.1	4.0	40	42	47	52	51

¹ "Short-term Disability Claims" is the number of claims accepted for short-term disability, long-term disability, or survivor benefits either in the year of injury or in the first quarter of the following year.

² One person-year is the equivalent of 52 paid weeks of employment, whether worked by one individual or several. Subsector estimates of person-years are based on gross payrolls submitted by employers and matching Statistics Canada wage-rate data (source: 72-002). This method of estimating person-years is in accordance with a convention established by the Association of Workers' Compensation Boards of Canada.

³ Total claim duration is a measure of the total days lost per claim on disability claims, including days lost in years beyond the year of injury. It is calculated according to a convention established by the AWCBC. A number of different methods can be used to calculate duration, therefore comparisons of duration statistics from different sources should be made carefully.

⁴ "Days lost" for subsectors where compensation is frequently paid on a "calendar day" basis have been adjusted so that they are on the same "work day" basis as the other subsectors.

⁵ Revised figures.

⁶ 2000 person-years are based on preliminary estimates of payroll. The number of injuries that occurred in 2000 and will be accepted in the first quarter of 2001 is estimated.

⁷ Because of the difficulty in calculating estimates of person-years for subsector 7020 (most subsector 7020 employers don't report gross payrolls in the same way as employers in other rated subsectors), no injury rates are calculated for subsector 7020.

⁸ The 2000 injury rate for subsector 7220 is subject to additional uncertainty because of a sharp increase in activity in 2000.

⁹ Injury rates of less than 0.5 are shown as 0.

¹⁰ Many of the employers in this subsector have been covered by the *Workers Compensation Act* only since 1994, so complete durations can be computed only for the years 1998 to 2000.

¹¹ The all-subsector figures include deposit account subsectors (not shown individually) as well as the rateable subsectors that are shown individually. The all-subsector figures include the *Bill 63* industries.

An Analysis by Year of Injury of the Total Days Lost During 2000 and the Number of Short-term Disability¹, Long-term Disability², and Fatal Claims First Paid in 2000

Table C

Year of Injury	Number of Short-term Disability ¹ , Long-term Disability ² , and Fatal Claims First Paid in 2000	Total Days Lost in 2000 from all Claims ³
1952	-	53
1953	-	255
1955	-	260
1960	-	498
1962	-	522
1963	1	413
1964	-	579
1965	-	383
1966	-	124
1967	-	624
1968	-	883
1969	-	885
1970	-	217
1971	-	785
1972	-	1,692
1973	-	1,438
1974	1	1,865
1975	-	1,814
1976	2	1,930
1977	2	2,967
1978	2	3,091
1979	7	3,073
1980	-1	3,676
1981	1	3,941
1982	1	2,189
1983	7	2,674
1984	2	3,537
1985	-	6,521

Year of Injury	Number of Short-term Disability ¹ , Long-term Disability ² , and Fatal Claims First Paid in 2000	Total Days Lost in 2000 from all Claims ³
1986	3	2,997
1987	5	5,865
1988	9	6,082
1989	7	7,462
1990	4	15,284
1991	12	13,343
1992	13	28,058
1993	17	33,217
1994	23	47,797
1995	35	69,284
1996	55	91,286
1997	112	171,504
1998	286	280,314
1999	5,500	937,859
2000	66,208	1,734,693
TOTAL	72,314	3,491,934

¹ *Short-term disability claims* is the term for what were described as *wage-loss claims* in 1991 and earlier versions of this table.

² *Long-term disability claims* is the term for what were described as *permanent disability claims* in 1991 and earlier versions of this table.

³ These figures are work days compensated in 2000 on all claims, not just claims first paid in 2000.

An Analysis by Sector¹ of Industry, Gender, and Age Group of the Short-term Disability², Long-term Disability³, and Fatal Claims First Paid in 2000

Table D

Age Group ⁴	Number of STD, LTD, and Fatal Claims First Paid									Total No. of Claims	Gender ⁴	
	Sector										Male	Female
	70	71	72	73	74	75	76	Deposit	Other ⁵			
19 and Under	175	615	285	135	675	55	1,280	20	0	3,240	2,300	940
20–24	525	1,825	765	625	1,210	160	2,540	150	0	7,800	5,935	1,865
25–29	550	2,045	980	695	1,210	205	2,610	335	0	8,630	6,400	2,230
30–34	560	2,170	1,135	955	1,165	400	2,995	495	0	9,875	7,285	2,590
35–39	595	2,385	1,145	1,095	1,235	480	3,745	630	3	11,315	8,065	3,250
40–44	535	2,205	960	925	1,070	550	3,630	690	0	10,565	7,130	3,435
45–49	395	1,545	660	800	710	435	3,165	510	0	8,220	5,470	2,750
50–54	295	1,065	485	660	520	260	2,640	380	0	6,305	4,065	2,240
55–59	185	765	325	405	335	165	1,610	170	0	3,960	2,610	1,350
60–69	145	405	265	260	150	60	795	65	0	2,145	1,625	520
Over 69	45	70	50	25	0	5	55	10	0	260	245	15
TOTAL	4,007	15,095	7,056	6,579	8,280	2,778	25,062	3,454	3	72,314	51,130	21,185
AVERAGE AGE	38	37	38	39	34	40	39	40		38	38	39

¹ For a complete description of the sector numbers, see “Classes of Industry” on page 53.

² *Short-term disability claims* is the term for what were called *temporary total claims* in 1991 and earlier versions of this table.

³ *Long-term disability claims* is the term for what were called *permanent disability claims* in 1991 and earlier versions of this table.

⁴ Claims uncoded to age and gender have been proportionately allocated, and the counts rounded to the nearest five. Therefore, columns and rows may not add up to the totals shown.

⁵ Includes claims not yet coded to a subsector and Section 39 of the *Workers Compensation Act*.

An Analysis by Injury of the Short-term Disability, Long-term Disability, and Fatal Claims First Paid, 1996–2000

Table E

Injury	Number of STD, LTD, and Fatal Claims First Paid ¹						Days Lost ² , 1996–2000	Short-term Disability, Long-term Disability, and Survivor Benefits ³ , (Excludes Rehab and Health Care Costs), 1996–2000
	1996	1997	1998	1999	2000	1996–2000		
Abrasion	2,300	2,160	1,870	1,670	1,700	9,700	61,800	\$13,774,000
Amputation	180	250	280	310	320	1,340	174,200	\$52,448,000
Burn	1,400	1,460	1,420	1,300	1,380	6,960	89,200	\$22,980,000
Concussion	440	500	680	760	880	3,260	242,400	\$65,042,000
Contusion	10,990	11,170	8,420	7,130	7,720	45,430	1,323,100	\$293,962,000
Cut	8,850	8,950	8,380	7,700	7,650	41,530	783,400	\$147,026,000
Dislocation	350	430	410	460	490	2,140	164,600	\$27,526,000
Electric Shock, Electrocution	80	100	70	70	90	410	21,300	\$16,425,000
Fracture	3,930	4,260	4,050	4,180	4,050	20,470	2,247,200	\$522,550,000
Hernia	400	370	420	470	430	2,090	102,800	\$10,169,000
Back Strain	18,450	18,780	18,730	17,800	18,170	91,930	3,809,600	\$617,380,000
Other Strain	19,380	19,810	20,640	21,100	21,210	102,140	4,989,400	\$717,834,000
Multiple Injuries	80	100	50	40	70	340	28,300	\$93,382,000
Other Injuries	140	140	140	220	410	1,050	85,300	\$74,146,000
Occupational Disease ⁴	6,870	6,650	7,240	8,130	7,740	36,630	2,118,900	\$381,254,000
TOTAL⁵	73,840	75,124	72,795	71,343	72,314	365,416	16,241,557	\$3,055,898,288

¹ Number of short-term disability, long-term disability, and fatal claims accepted in the year. Some of the figures for years prior to 2000 have been revised.

² “Days lost” are as paid in the period on current and prior-year claims.

³ Includes short-term disability, long-term disability, and survivor benefits charged in the period on current- and prior-year claims. Excludes the increase in widows’ pension entitlement arising from *Bill 63* and the 1997 B.C. Supreme Court decision.

⁴ In this table, “Occupational Disease” includes traumatic tenosynovitis, traumatic bursitis, and related conditions.

⁵ The claim counts, days lost, and claim costs by injury category have been adjusted for the effect of uncoded claims and appear as rounded numbers. The columns, therefore, do not necessarily add up to the column totals shown.

Back Strain Claims (Excluding Health-care-only Claims) Paid for the First Time During 1991–2000

Table F

Year	Number of Back Strain Claims ¹ First Paid in the Year	Total Number of Claims ¹ First Paid in the Year	Back Strain Claims ¹ as a % of Total Claims ¹	Days Lost ² in the Year on Back Strain Claims	Days Lost ² in the Year on All Claims	Days Lost ² on Back Strain Claims as a % of All Days Lost ²
1991	20,560	81,236	25.3%	735,300	2,727,318	27.0%
1992	20,750	81,003	25.6%	841,900	3,102,791	27.1%
1993	19,540	79,503	24.6%	832,700	3,271,064	25.5%
1994	20,900	81,488	25.6%	923,000	3,430,119	26.9%
1995	19,760	78,400	25.2%	806,800	3,211,740	25.1%
1996	18,450	73,840	25.0%	693,500	2,842,111	24.4%
1997	18,780	75,124	25.0%	721,900	2,981,280	24.2%
1998	18,730	72,795	25.7%	784,100	3,319,300	23.6%
1999	17,800	71,343	24.9%	830,600	3,606,932	23.0%
2000	18,170 est ³	72,314	25.1%	779,500 est ³	3,491,934	22.3%
1991–2000	193,440	767,046	25.2%	7,949,300	31,984,589	24.9%

¹ Excluding health-care-only claims. (*Health-care-only claims* is the term for what were called *medical-aid-only claims* in 1991 and earlier versions of this table.)

² “Days lost” are as paid in the year on current and prior-year claims.

³ Claims uncoded at year-end have been proportionately allocated to the back strain category. This figure is an estimate.

Assessment Statistics

Classes of Industry

Effective January 1, 2000, all industries within the scope of the *Workers Compensation Act* are divided into 11 classes. For administrative purposes, these classes are represented as sectors within the Board's classification structure, as follows:

Class 1: Primary Resources	Sector 70	Primary Resources
Class 2: Manufacturing	Sector 71	Manufacturing
Class 3: Construction	Sector 72	Construction
Class 4: Transportation and Warehousing	Sector 73	Transportation and Warehousing
Class 5: Trade	Sector 74	Trade
Class 6: Public Services	Sector 75	Public Sector
Class 7: General Services	Sector 76	Service Sector
Class 8: Building Construction, Canadian Airlines International Ltd., Canadian Pacific Hotels Corporation, Canadian Pacific Railway Company, Cominco Ltd., Express, Trucking and Hauling, Water Transportation	Sector 81	Deposit Sector 8 (formerly Class 10)
Class 9: The Burlington Northern and Santa Fe Railway Company	Sector 82	Deposit Sector 9 (formerly Class 18)
Class 10: Air Canada, Canadian National Railway Company, Via Rail Canada Inc.	Sector 83	Deposit Sector 10 (formerly Class 12)
Class 11: British Columbia Assessment Authority, British Columbia Buildings Corporation, British Columbia Development Corporation, British Columbia Ferry Corporation, British Columbia Harbours Board, British Columbia Railway Company, British Columbia Systems Corporation, Canada — British Columbia Employment Development Programme, Dental Technicians' Board, Emergency Health Services Commission, Employment Bridging Assistance Programme, First Aid Ski Patrol, Government of British Columbia, Learners in Vocational Training School, Liquor Distribution Branch, Provincial Emergency Programme, Railwest Manufacturing Company, Workers' Compensation Board of British Columbia	Sector 84	Deposit Sector 11 (formerly Class 13)

Following is a detailed listing of the various industries to which the *Workers Compensation Act* applies:

SECTOR 70 PRIMARY RESOURCES

Subsector 7010

Agriculture

Apiary
Artificial Insemination or Animal Breeding
Berry Farming
Composting
Dairy Farming
Egg Farming
Exotic Poultry Farming
Farm Labour Supply or Farm Services
Feed Lot or Stockyard
Fur Bearing Animal Farming
Grain Farming
Greenhouse
Hay or Seed Farming
Hog Farming
Hunting or Trapping
Orchard
Ornamental Nursery
Poultry Catching
Poultry Farming
Poultry Hatchery
Ranch
Riding Academy or Boarding or Raising Horses
Sod or Turf Nursery
Vegetable Farming
Vineyard
White Mushroom Farming
Wild Plant Harvesting

Subsector 7020

Fishing

Dive Fishing
Fin Fish Farming
Fish Hatchery
Fish Packing and Hand Picking
Fishing
Gillnet and Troll Fishing
Longline and Trap Fishing
Seine Fishing
Shell Fish Farming
Trawl Fishing

Subsector 7030

Forestry

Brushing and Weeding, Tree Thinning or Spacing
(not elsewhere specified)
Cable or Hi-Lead Logging
Chemical Brushing and Weeding, Chemical Tree
Thinning or Spacing
Dry Land Sort
Forest Fire Fighting
Ground Skidding, Horse Logging, or Log Loading
Integrated Logging
Log Booming
Log Processing
Logging Road Construction or Maintenance
Manual Tree Falling and Bucking
Mechanized Tree Falling
Shake Block Cutting
Tree Planting or Cone Picking

Subsector 7040

Oil and Gas or Mineral Resources

Clay, Peat, Soil, Topsoil Digging or Processing
Diamond Drilling, Seismic Drilling, or Shot Hole Drilling
Geological, Geophysical, or Geochemical Field Work
Oil and Gas or Mineral Exploration, or Prospecting
Oil or Gas Drilling

Oil or Gas Field Servicing (by means other than service rigs)
 Oil or Gas Well Servicing (by means of service rigs)
 Open Pit Coal Mining
 Open Pit Metal or Mineral Mining
 Placer Mining
 Quarry
 Seismic Exploration
 Stone Crushing
 Underground Coal Mining
 Underground Metal or Mineral Mining

SECTOR 71 MANUFACTURING

Subsector 7110 Food and Beverage Products

Abattoir
 Alcoholic Beverage Manufacture
 Animal Feed or Supplement Manufacture or Packaging
 Baked Goods Manufacture
 Butter, Cheese, or Ice Cream Manufacture
 Candy or Chocolate Manufacture
 Cereal, Biscuit, Taco or Rice Product, Pasta, or Other Dry Food Product Manufacture (not elsewhere specified)
 Coffee, Tea, Herb or Spice Packaging or Manufacture
 Fish Canning
 Fish Processing or Fish Reduction
 Flour Mill or Rice Mill
 Food Product Manufacture (not elsewhere specified)
 Fruit or Vegetable Canning, Bottling or Processing, or Fruit or Vegetable Product Manufacture
 Ice Manufacture
 Liquid Dairy Product Manufacture
 Meat Canning or Canned Meat Product Manufacture
 Meat Cutting, Packing, or Processing
 Non-Alcoholic Beverage Manufacture or Water Bottling
 Poultry Processing

Subsector 7120

Sausage or Sausage Casing Manufacture
 Smoked, Cured or Prepared Meat Product Manufacture (not elsewhere specified)
 Sugar Refining and Packaging

Metal and Non-Metallic Mineral Products

Aircraft, Automobile or Truck Assembly
 Auto Spring or Chain Manufacture
 Boiler, Tank or Furnace Manufacture
 Cement Manufacture
 Ceramic or Terra Cotta Tile, Clay Brick or other Ceramic, or Clay Product Manufacture (not elsewhere specified)
 Commercial Marine Vessel Manufacture, Service or Repair
 Concrete Product Manufacture
 Control Panel Manufacture, Installation, Service or Repair
 Die Casting
 Dry Dock or Marine Railway
 Electrical Switchgear or Transformer Manufacture, Installation, Service or Repair
 Elevator or Escalator Manufacture, Installation, Service or Repair
 Engine or Cylinder Manufacture or Rebuilding or Automobile Part Manufacture
 Fishing Tackle Manufacture
 Foundry
 Fuel Cell Manufacture
 Galvanizing, Electroplating, or Protection Plating
 Gypsum Product Manufacture
 Heavy Equipment, Machinery, or Parts Manufacture or Installation (greater than 500 lbs weight)
 Industrial Saw Blade Manufacture, Sharpening, Service, or Repair
 Light Industrial Equipment, Machinery, or Power Tool Manufacture (less than 500 lbs weight)
 Lime Kiln or Lime Manufacture
 Machine Shop

Metal Bed, Furniture or Ladder Manufacture
 Metal Can or Tinware Product Manufacture
 Metal Door, Screen Door or Aluminum Window
 Manufacture
 Metal Fastener Manufacture
 Metal Pipe or Fitting Manufacture
 Metal Product Manufacture (not elsewhere specified)
 Metal Railing or Gate Manufacture
 Metal Recycling
 Powder Coating or Metal Enamelling
 Precision Instrument Manufacture
 Ready Mix Concrete Manufacture and Delivery
 Sheet Metal Fabrication
 Smelter
 Soil, Topsoil, Peat or Other Similar Gardening Material
 Packaging
 Stone or Marble Cutting, Dressing, Shaping, or
 Lettering, or Stone or Marble Product Manufacture
 Structural Concrete Product Manufacture
 Structural Metal Product Fabrication
 Tool and Die Making
 Truck Body or Trailer Manufacture
 Wire, Cable or Other Wire Product Manufacture
 (not elsewhere specified)
 Wood Mill Saw Manufacture

**Subsector 7130 Petroleum, Coal, Rubber, Plastic,
and Chemical Products**

Acid, Base, Salt, Chemical or Dye Manufacture
 (not elsewhere specified)
 Asphalt or Tar Roofing Product Manufacture
 Battery Manufacture
 Candle, Polish or Other Wax Product Manufacture
 Chemical Pesticide or Herbicide Manufacture
 Compressed or Liquefied Gas Manufacture

Cosmetic Product or Beauty Aid Manufacture
 Drug, Vitamin or Pharmaceutical Manufacture
 Explosives, Fireworks or Munitions Manufacture
 Fertilizer Manufacture
 Fibreglass Insulation Manufacture
 Fibreglass or Cultured Marble Product or Acrylic
 Household Fixture Manufacture
 Foam Product Manufacture
 Glue or Adhesive Manufacture
 Industrial Rubber Belt Manufacture, Installation, Service,
 or Repair
 Ink Manufacture
 Oil or Gas Production
 Oil Refining, Oil Recycling, or Operation of Fuel
 Storage Tanks
 Paint, Putty, Stain, Sealant, Wood Filler, Varnish, or
 Waterproofing Agent Manufacture
 Petrochemical Manufacture
 Plastic Colour Concentrate Manufacture
 Plastic Film Extrusion and Flexible Packaging Manufacture
 Plastic or Rubber Recycling
 Plastic Product Manufacture (by blow moulding)
 Plastic Product Manufacture (by profile extrusion)
 Plastic Product Manufacture (by rotational moulding or
 liquid moulding)
 Plastic Product Manufacture (by thermoforming,
 injection moulding, or other moulding processes
 (not elsewhere specified)
 Post Extrusion Fabrication of Plastic Products
 Rubber Mat, Mattress or Life Raft Manufacture
 Small Rubber or Plastic Product Manufacture
 Soap, Bleach or Cleaning Compound Manufacture
 Synthetic Resin Compound Manufacture
 Tire Retreading or Recapping

Subsector 7140 Wood and Paper Products

Cardboard or Paper Container Manufacture
Chemical Pulp and Paper Mill
Coffin or Casket Manufacture
Custom Wood Kiln
Envelope Manufacture
Flush Door Manufacture
Furniture Refinishing or Restoration
Laminated Wood Structural Support Product Manufacture
Mechanical Pulp and Paper Mill
Oriented Strand Board Manufacture
Paper Product Manufacture (not elsewhere specified)
Paper Recycling or Cellulose Insulation Manufacture
Planing Mill
Portable Wood Mill
Pre-Hung Door Assembly
Prefabricated Log Home Kit Manufacture
Pressed Board Manufacture (not elsewhere specified)
Printing
Sawmill
Shake or Shingle Mill
Stationery Manufacture
Stile and Rail Door Manufacture
Upholstering
Veneer or Plywood Manufacture
Wood Chip Mill
Wood Preserving
Wood Window Manufacture
Wooden Box, Crate, Pallet or Lath Manufacture
Wooden Component Manufacture
(not elsewhere specified)
Wooden Fence or Gate Manufacture
Wooden Furniture Manufacture
Wooden Moulding Manufacture
Wooden Musical Instrument Manufacture
Wooden Post or Pole Manufacture

Wooden Product Manufacture (not elsewhere specified)
Wooden Toy Manufacture
Wooden Truss Manufacture
Woodworking or Carpentry Shop

Subsector 7150 Other Products (not elsewhere specified)

Art, Craft or Ornament Manufacture
Awning or Awning Sign Manufacture
Blind or Drapery Track Manufacture
Brush, Broom or Mop Manufacture
Canvas or Nylon Product Manufacture
(not elsewhere specified)
Carpet or Rug Manufacture
Clock or Watch Manufacture
Clothing, Clothing Accessory, or Other Cloth Product
Manufacture (not elsewhere specified)
Commercial Sign Manufacture
Cord, Rope or Net Manufacture
Cushion or Stuffed Toy Manufacture
Custom Tailoring
Drapery Manufacture
Electric or Electronic Product or Component
Manufacture (not elsewhere specified)
Eyewear Manufacture
Fabric Manufacture
Footwear Manufacture
Fur Product Manufacture
Gasket or Filter Manufacture
Glass Recycling or Glass Brick, Bottle, or Other
Container Manufacture
Glass Shop, Window Installation, or Window Glass
Repair or Replacement
Illuminated or Electronic Sign Manufacture
Jewellery or Trophy Manufacture
Leather Product Manufacture
Lighting Fixture Manufacture

Luggage Manufacture or Repair
 Marine Pleasure Craft Manufacture
 Mattress Manufacture
 Modular or Prefabricated Building Manufacture
 (not elsewhere specified)
 Orthotics or Prosthetics Manufacture, Sales, Service,
 or Repair
 Shoe Repair Shop or Leather Goods Repair
 Tannery
 Taxidermy
 Vinyl Window Manufacture

Fire and Flood Restoration
 Floor Covering Installation (not elsewhere specified)
 Framing or Residential Forming
 Hardwood Floor Laying or Refinishing
 House or Other Wood Frame Construction or
 Renovation Work
 Industrial, Commercial, Institutional or Highrise
 Residential Construction
 Insulation Work or Fireproofing
 Interior Decorating
 Land Clearing, Excavation, or Site Development
 Lathing
 Log Home Construction
 Low Slope Roofing
 Masonry
 Mechanical Insulation
 Oil or Gas Pipeline Construction or Repair
 Overhead Door Installation
 Painting or Wallpapering
 Plastering or Stucco Work
 Plumbing, Heating, Vent, Residential Air Conditioning, or
 Central Vacuum System Installation or Repair
 Pool, Spa or Hot Tub Installation or Structural Repair
 Power Pole, Street Light, Powerline, or Transmission Line
 Installation, Service, or Repair
 Prefabricated Steel Building Construction
 Scaffolding, Tent, Staging, or Display Booth Rental
 and Installation
 Siding, Awning or Gutter Installation
 Sign Installation, Service, or Repair
 Steep Slope Roofing
 Structural Concrete Forming
 Tile Work or Terrazzo Laying
 Water Well, Foundational or Directional Drilling
 Welding Services or Ornamental Metal Installation

SECTOR 72 CONSTRUCTION

Subsector 7210 General Construction

Asbestos Abatement
 Blasting or Avalanche Control
 Building Demolition
 Cellular, Microwave, Radar or Transmission Tower
 Erection, Installation, Service or Repair
 Commercial Refrigeration or Commercial Air
 Conditioning Work
 Commercial Tank or Boiler Installation or Removal
 Concrete Cutting or Coring
 Concrete Placing, Finishing, Surfacing or Repair
 Concrete Pumping
 Concrete Reinforcing
 Construction Labour Supply or General Labour Supply
 (not elsewhere specified)
 Crane Operation
 Deck, Railing or Fence Installation
 Decking Application or Waterproofing
 Dredging
 Drywalling or Acoustic Board Installation
 Electrical Work
 Finishing Carpentry

Subsector 7220 Heavy Construction
 Bridge, Overpass or Viaduct Construction or Repair
 House Raising or Structural Moving of Buildings or
 Heavy Equipment
 Pier, Wharf or Dry Dock Construction or Repair
 Pile Driving
 Steel Frame Erection or Structural Repair of Steel Frames
 Steel Frame Painting, Bridge Painting, or Bridge Cleaning
 Structural Concrete Reservoir, Flume, Dam, Dyke,
 Causeway, or Jetty Construction or Repair
 Tunneling

Subsector 7230 Road Construction or Maintenance
 Earth and Rock Filled Structure Construction
 Highway Maintenance (routine maintenance of all
 aspects of a specific section of highway)
 Highway, Road or Parking Lot Painting
 Paving Services or Asphalt Manufacture
 Railway Construction, Maintenance, or Demolition
 Road Construction or Maintenance
 (not elsewhere specified)
 Snow or Ice Removal
 Street Cleaning
 Traffic Control

SECTOR 73 TRANSPORTATION AND WAREHOUSING

Subsector 7310 Warehousing
 Cold Storage Plant
 Grain Elevator Operation
 Recycling Depot
 Warehouse Operation

Subsector 7320 Transportation and Related Services
 Aircraft Fueling
 Aircraft Handling
 Airport

Armoured Car Service
 Auto Towing
 Aviation or Flying School
 Barge, Tug, or Other Water Transport of Goods
 (not elsewhere specified)
 Bus Line or Chartered Bus Tours
 Courier Services
 Distribution Centre
 Dump Truck Operation
 Ferry Service
 Fixed Wing Aerial Work or Other Specialty Air Operations
 (not elsewhere specified)
 Fixed Wing Instrument Flight Rule Operation
 Fixed Wing Visual Flight Rule Operation
 Garbage, Debris, Industrial Waste, or Recyclable
 Material Removal
 General Trucking (not elsewhere specified) or Domestic
 Freight Forwarding
 General Wharf Operations
 Harbour Commission or Port Authority
 Helicopter Aerial Work (not elsewhere specified)
 Helicopter Instrument Flight Rule Operation
 Helicopter Logging
 Helicopter Visual Flight Rule Operation
 Limousine, Chauffeur or Handydart Services
 Loading or Unloading Goods (not elsewhere specified)
 Log Hauling
 Log Towing
 Marine Bulk Terminal
 Marine Container Terminal
 Marine Piloting
 Mobile Home or Boat Towing
 Moving and Storage
 Newspaper, Magazine or Flyer Distribution or Contract
 Mail Delivery
 Pilot Car or Auto Delivery Services

Railway
Ship Docking
Stevedoring
Taxi Service
Water Taxi or Crew Transport

SECTOR 74 TRADE

Subsector 7410 Retail

Aircraft and Aircraft Equipment Sales and Leasing
Auctioning or Appraisal Services (not elsewhere specified)
Auto Sales (no service)
Bicycle Shop or Sports Equipment Rental
Butcher Shop
Car or Truck Rental
Department Store
Eyewear Sales or Repair
Firewood Yard
Garden or Landscaping Supply
Gas Bar
General Retail (not elsewhere specified)
Home Improvement Centre
Jewellery, Clock, Watch or Trophy Sales and Repair,
or Key Cutting
Light Industrial Equipment, Machinery or Power Tool
Rental (less than 500 lbs weight)
Mobile Home Sales or Installation
Music Shop
Party Supply
Retail Art Gallery and Picture Framing
Retail Bakery or Delicatessen
Retail Brewing or Wine Making Shop
Retail Confectionery
Satellite TV Dish Sales, Service or Installation
Supermarket

Subsector 7420 Wholesale

Chemical Wholesale
Clothing, Linen or Other Textile Wholesale
Drug, Vitamin, Pharmaceutical or Beauty Aid Wholesale
Electrical, Plumbing or Heating Supplies, or Packaged
Building Supplies, Hardware, or Other Metal
Product Wholesale
Electronic Equipment or Light Equipment, Machinery, or
Parts Wholesale (less than 500 lbs weight)
Film Distribution
Fish Wholesale
Food, Beverage, or Tobacco Product Wholesale
Hay, Seed, Dry Animal Feed, or Other Similar Farm
Product Wholesale
Log Wholesale Trading
Lumber, Plywood, Gyproc, Brick, or Other Similar
Building Material Wholesale
Medical or Dental Supplies Wholesale
Packaged Petroleum Product Wholesale
Steel or Metal Wholesale (primary form)
Wholesale (not elsewhere specified)

SECTOR 75 PUBLIC SECTOR

Subsector 7530 Public Administration

EI Job Creation
Indian Band and Related Operations
Law Enforcement
Local Government and Related Operations

SECTOR 76 SERVICE SECTOR

Subsector 7610 Accommodation, Food, and Leisure Services

Amusement Facility (not elsewhere specified)
Arcade
Auto Race Course

Bed and Breakfast
 Billiard or Pool Hall
 Bingo, Casino or Other Gaming Operations
 Bowling Alley
 Cabin, Cottage, Lodge, Resort, or Other Overnight
 Rental Accommodation (not elsewhere specified)
 Campground
 Catering Services (not elsewhere specified)
 Chartered Boat Tours
 Circus, Carnival, Rodeo, or Mechanical Amusement Ride
 Coffee Shops, Ice Cream Parlours, or Other Food
 Concessions (not elsewhere specified)
 Fitness Centre, Gym, or Health Centre
 Golf Course, Driving Range, Pitch and Putt, or Lawn
 Bowling Facility
 Guided Tour (not elsewhere specified)
 Hair Styling Establishment or Esthetic Services
 Hall Rental
 Horse Race Course
 Hotel
 Industrial Catering
 Live Performance Production House
 Live Performance Road House
 Marina or Boat Rental
 Massage Parlour, Steam Bath, or Escort Services
 Mini Storage
 Mobile Catering
 Motel
 Movie Theatre or Drive-In Theatre
 Organizing a Leisure, Social, or Sport Club
 Organizing or Conducting Special Events
 (not elsewhere specified)
 Organizing or Operating a Private Camp
 Outdoor Sport Tour
 Park, Campground or Trail Maintenance
 Parking Lot or Valet Parking

Subsector 7620

Performing Arts
 Private Park, Garden, or Zoo
 Property Management, Building Rental, or Mobile Home
 Parks and Strata Corporations
 Pub, Bar, Night Club, or Lounge
 Public Art Gallery, Museum, or Other Special Interest
 Building Operation or Related Services
 Restaurant or Other Dining Establishment
 Rooming House or Hostel
 Ski Hill or Gondola Ride
 Sport Facility
 Sports Administration
 Sports Instruction School
 Tanning Salon
 Travel Agency or Accommodation Registry

Business Services

Accounting or Bookkeeping
 Actuarial Services
 Administration of an Operation Conducted Outside B.C.
 Advertising or Public Relations Services
 Broker (not elsewhere specified) or Wholesale
 (with no stock of goods in B.C.)
 Business Consulting
 Call Centre
 Chamber of Commerce
 Cheque Cashing
 Clerical Worker Supply
 Commercial Stock Audit
 Constituency Office, Consulate, Foreign Embassy, or
 MLA Office
 Custom Brokerage or International Freight Forwarding
 (excluding handling of goods)
 Custom Brokerage or International Freight Forwarding
 (including handling of goods)
 Data Processing

Digital Printing
 Employers' Association, Marketing Board, or Better
 Business Bureau
 Employment Agency or Aptitude Testing
 Environmental Conservation Services
 Financial or Lending Institution
 Franchisor Services
 Graphic Design
 Insurance or Bonding Services
 Law Office, Notary Public, Labour Relations, or
 Supplementary Legal Services
 Marine Cargo Inspection
 Marine Ship Agency and Related Services
 Market Research
 Modeling, Booking, or Talent Agency
 Mortgage Brokerage
 Packaged Office Service
 Private Investigation, Process Serving, Collection, or
 Bailliff Services
 Product Demonstration
 Professional Association
 Property Management (administration only)
 Publishing (with printing)
 Real Estate Agency
 Real Estate Appraisal
 Records Storage
 Research Services (not elsewhere specified)
 Security or Stock Brokerage, Financial Planning, or
 Investment Services
 Ship Chandlery or Ship Husbandry
 Telemarketing
 Telephone Answering Service
 Translating or Interpreting Services
 Union
 Venture Capital Investment
 Writing, Publishing, or Map Production (no printing)

Subsector 7630 Professional, Scientific, and Technical Services

Air Navigation Support
 Animal Humane Society or Wildlife Rehabilitation
 Animal Training
 Architectural Drafting or Design
 Building or Home Inspection
 Computer Consulting or Custom Computer Programming
 Computer Software Package Design and Production
 Computer Software, Audio or Video Duplicating, or
 Document Scanning Services
 Construction Management Consulting
 Consulting (not elsewhere specified)
 Consulting Engineering
 Dental Laboratory
 Electrical Corrosion Control
 Farrier Services
 Forest Management Consulting
 Geological, Geophysical or Geochemical Consulting or
 Analysis
 Industrial Testing
 Interior Design Consulting
 Kennel
 Land Surveying
 Log Scaling
 Marine Vessel Surveying
 Medical Diagnostic Laboratory
 Motion Picture, Commercial or Television Post Production
 Motion Picture, Commercial or Television Production
 Pet Grooming
 Photo Film Processing or Microfilming
 Photography Studio or Photographic Services
 Pipeline or Heavy Equipment Inspection
 Recording Studio
 Scientific Research Laboratory
 Television or Radio Broadcasting
 Veterinary Hospital or Veterinary Services

Subsector 7640 Other Services (not elsewhere specified)

Aircraft Maintenance or Repair
Armature Winding for Small Motors
Auto Dealership (sales and service)
Auto Glass Shop
Auto Recycling
Auto Service or Repair
Autobody Shop
Automatic Door or Gate Installation, Service or Repair
Bindery
Blind or Drapery Cleaning
Blind or Drapery Track Installation
Car Wash or Auto Detailing
Carpet, Rug, or Upholstery Cleaning Using Portable Equipment
Cemetery or Crematorium
Chimney Cleaning
Commercial Cleaning or Janitorial Services
Commercial Diving
Commercial Laundry or Linen, Uniforms, or Diaper Supply
Commercial Retail Sign Shop or Document Copying Services
Creek or Stream Enhancement
Day Care Centre, Preschool, or Playschool
Domestic Cleaning
Dry Cleaning Facility or Laundromat
Farm Equipment or Parts Sales, Service, or Repair (greater than 500 lbs weight)
Fire Prevention Equipment Sales, Service, Installation, or Inspection
Fish Enhancement
Fruit or Vegetable Packing or Packaging
Funeral Undertaking
Furnace, Duct or Air Vent Cleaning and Servicing
Heavy Equipment or Machinery Rental (excluding scaffolding supply and installation)

Heavy Equipment, Machinery, or Parts Sales, Service, or Repair (greater than 500 lbs weight) (not elsewhere specified)
Hiring or Providing Domestic Childcare
Hiring Workers for Own Home Maintenance
Homemaker Services
Knife, Scissor, Handsaw, or Hand Tool Sharpening
Land Pollution Control
Landscaping or Installation of Lawn Irrigation Systems
Lawn Maintenance, Garden Maintenance, or Weed Control
Light Industrial Equipment, Machinery or Parts, or Power Tool Service or Repair (less than 500 lbs weight)
Locksmithing
Mailing or Addressing Services
Major Household Appliance or Stationary Business Machines or Medical Equipment Service, Repair, or Installation
Marine Pollution Control
Marine Salvage, Marine Log Salvage, or Marine Garbage Collection
Ornamental Plant Rental or Office Plant Services
Paper Shredding
Plastic Laminating, Packing, or Packaging (not elsewhere specified)
Pleasure Boat, Motorcycle, Snowmobile, or Other Leisure Craft Sales and Service
Pool, Spa, or Hot Tub Service
Portable Electronic Equipment or Small Household Appliance Service or Repair
Recreational Vehicle Sales, Service, or Rental
Security Alarm System Sales, Service, Installation, and Repair or Telecommunication, Cable TV, or Other Similar Wiring
Security or Patrol Services
Septic Tank, Sewer, or Sewage Disposal System Services
Service Station

Social Companion Services
 Steam Cleaning, Sandblasting, or Pressure Washing of Buildings, Pools or Parking Lots
 Steam Cleaning, Sandblasting, or Pressure Washing of Heavy Equipment
 Structural Pest Control or Fumigation
 Structural Repair of Marine Pleasure Craft
 Tree Services (not directly related to the forestry industry)
 Vending Machine or Amusement Machine Distribution
 Washing Machine or Dryer Distribution (coin-operated)
 Window, Gutter or Awning Cleaning

Subsector 7650

Education

College, Trade School, or Vocational School
 Driving School
 Independent or Private Primary or Secondary School
 Library or Resource Centre
 Non-Academic School (not elsewhere specified)
 Public School District
 Tutoring Service
 University

Subsector 7660

Health Care and Social Assistance

Acute Care
 Alcohol or Drug Treatment Centre
 Alternative Health Care
 Ambulance or First Aid Services
 Chiropractic Services, Chiropractic Care, or Chiropractic Practice
 Community Health Support Services
 Counselling or Social Services (not elsewhere specified)
 Dentistry or Ancillary Dental Services
 Fundraising or Charitable Organization
 Life and Job Skills Training
 Long Term Care

Massage Therapy (licensed)
 Optometry
 Physiotherapy or Occupational Therapy
 Private Medical Practice (not elsewhere specified)
 Religious Organization
 Residential Social Service Facility
 Retirement Home or Seniors' Home (accommodation only)
 Short Term Care
 Supplementary Health Care
 Surgical Centre

Subsector 7670

Utilities

Cable Television Service
 Electric Utilities
 Gas Utilities
 Internet Services
 Oil or Gas Transmission (oil or gas pipeline)
 Telephone or Telecommunication Services

SECTOR 81

DEPOSIT SECTOR 8 (formerly Class 10)

Subsector 8108

Deposit Sector 8 (formerly Class 10)

Building Construction
 Canadian Airlines International Ltd.
 Canadian Pacific Hotels Corporation
 Canadian Pacific Railway Company
 Cominco Ltd.
 Express
 Trucking and Hauling
 Water Transportation

SECTOR 82

DEPOSIT SECTOR 9 (formerly Class 18)

Subsector 8209

Deposit Sector 9 (formerly Class 18)

The Burlington Northern and Sante Fe Railway Company

SECTOR 83 DEPOSIT SECTOR 10 (formerly Class 12)

Subsector 8310 Deposit Sector 10 (formerly Class 12)

Air Canada
Canadian National Railway Company
Via Rail Canada Inc.

SECTOR 84 DEPOSIT SECTOR 11 (formerly Class 13)

Subsector 8411 Deposit Sector 11 (formerly Class 13)

British Columbia Assessment Authority
British Columbia Buildings Corporation
British Columbia Development Corporation
British Columbia Ferry Corporation
British Columbia Harbours Board
British Columbia Railway Company
British Columbia Systems Corporation
Canada — British Columbia Employment Development
 Programme
Dental Technicians' Board
Emergency Health Services Commission
Employment Bridging Assistance Programme
First Aid Ski Patrol
Government of British Columbia
Learners in Vocational Training School
Liquor Distribution Branch
Provincial Emergency Programme
Railwest Manufacturing Company
Workers' Compensation Board of British Columbia

Assessment Statistics (Rateable Employers)

The following statistics are in respect of Rateable Employers only (i.e. excluding Self-Insured Employers and the Federal Government). Assessable payroll includes those portions of earnings up to the maximum wage rate — \$57,500 in 1999 and \$58,000 in 2000. Assessment statistics for the past eight years are as follows:

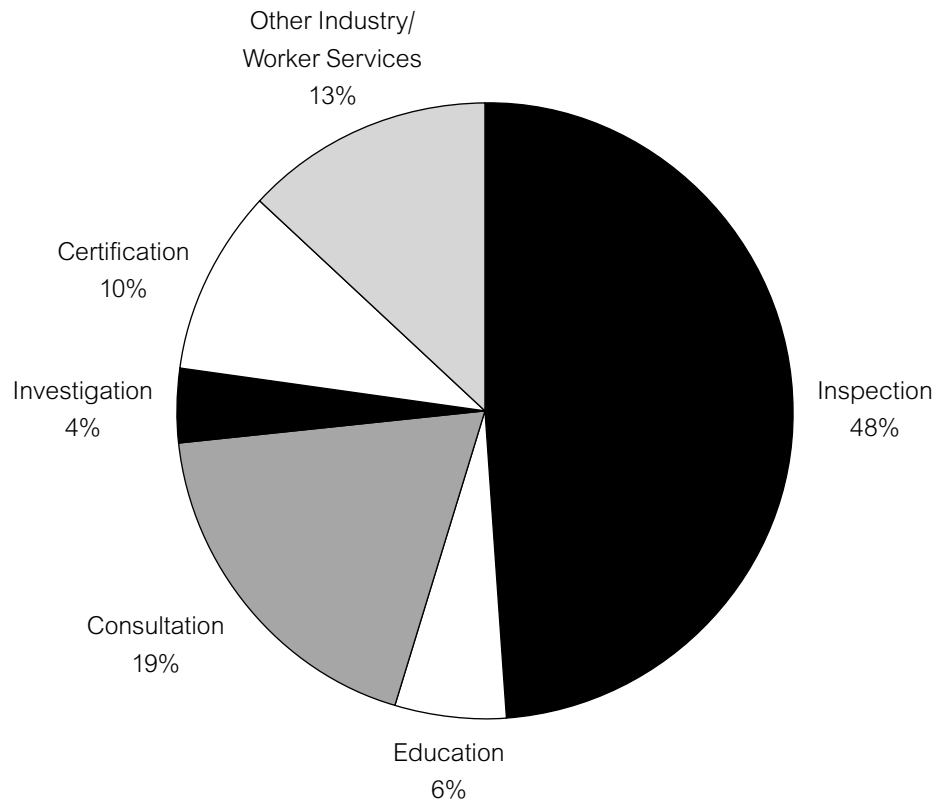
Year	Number of Employers at December 31	Assessable Payroll ¹	Premiums ¹	Maximum Wage Rate
1993	115,281	\$32,985,000,000	\$694,944,000	\$50,600
1994	139,601	\$38,550,000,000	\$834,439,000	\$51,300
1995	146,293	\$40,411,000,000	\$924,078,000	\$52,400
1996	152,316	\$41,948,000,000	\$961,774,000	\$54,200
1997	156,233	\$43,935,000,000	\$975,030,000	\$55,800
1998	161,770	\$45,045,000,000	\$907,047,000	\$56,900
1999	164,963	\$46,483,000,000	\$873,983,000	\$57,500
2000* (*estimate)	166,598	\$48,498,000,000	\$848,160,000	\$58,000

¹ The Assessable Payroll and Premiums shown above for 1999 and earlier differ from the numbers shown for those years in previous editions of this table because the figures in the previous editions included Rateable Employers, Self-Insured Employers, and the Federal Government, whereas the above data is for Rateable Employers only.

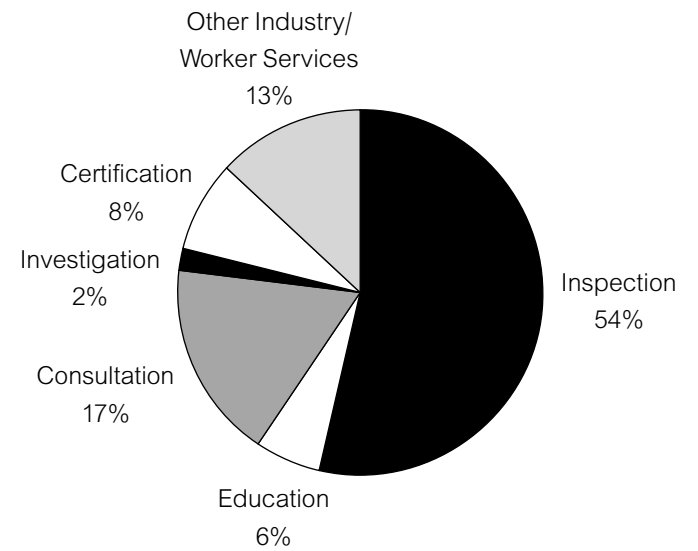
Prevention Statistics

Breakdown of Field Officers' Time

2000



1999



Regional Services — Field Officers' Time

Worksite Activity (Hours)	2000	1999	% Change
Inspection	133,109	134,572	-1.1%
Education	15,474	15,352	0.8%
Consultation	51,026	43,607	17.0%
Investigation	10,555	5,060	108.6%
Certification	26,276	20,083	30.8%
Other Industry/Worker Services	35,511	32,960	7.7%
Total Worksite Hours	271,951	251,633	8.1%

Document Type	2000	1999
Inspection Reports	31,063	34,264
Education Reports	1,892	1,819
Contact Records	14,227	12,575
Number of Orders Written	51,150	54,001

Hearing Conservation and Audiology Activities

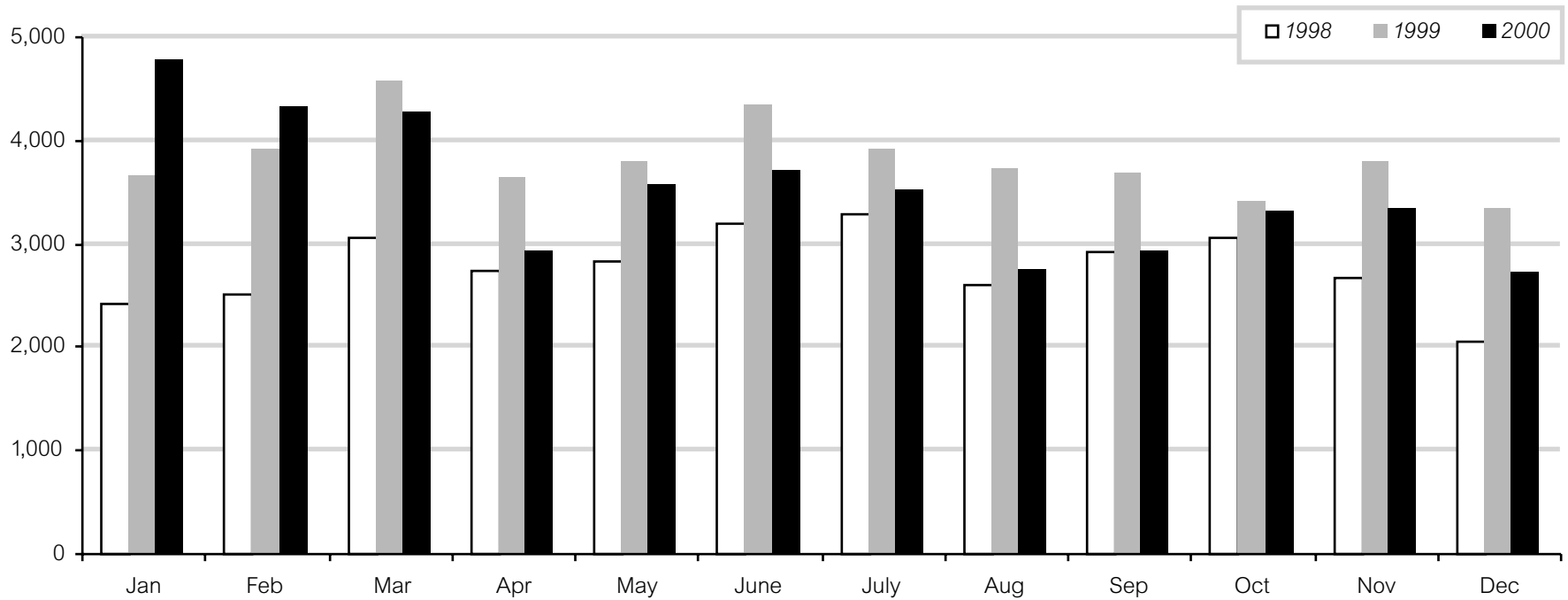
Hearing Conservation	2000	1999
Claim Files Reviewed (medical opinion)	3,630	3,390
Noise Assessments (NIHL Claims)	2,154	2,264
Education Presentations	6	3
Refresher Courses	19	22
Training Courses	7	10

Audiology	2000	1999
Audiological Assessments	946	996
Number of New Claims	2,417	2,287
Clinic Audits	11	34

Information Line Call Response Summary

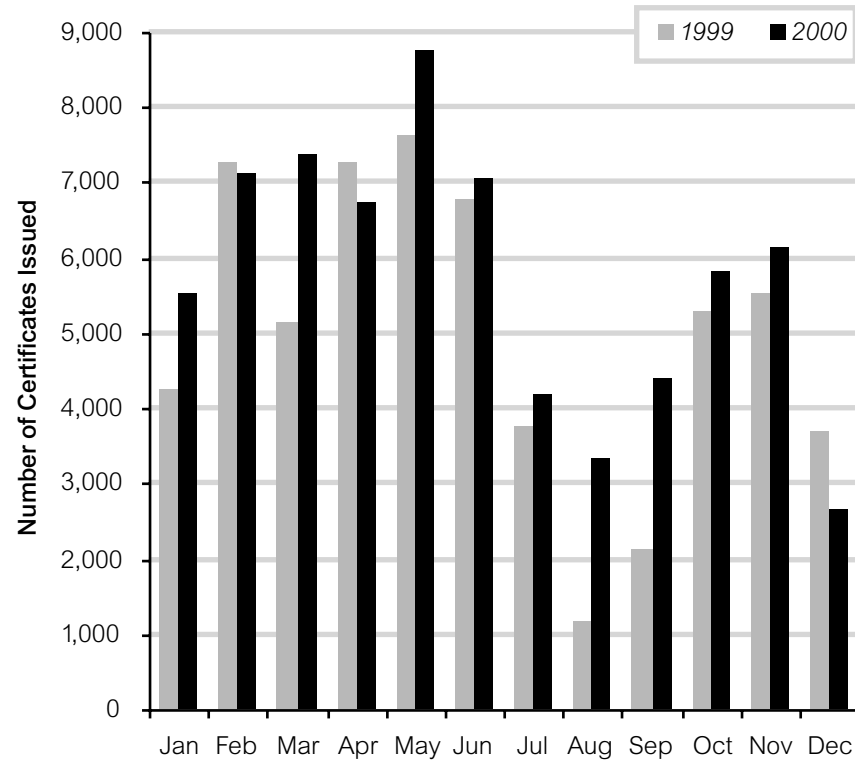
	1998	1999	2000
Total Calls	33,534	45,704	42,070

Number of Information Calls Received

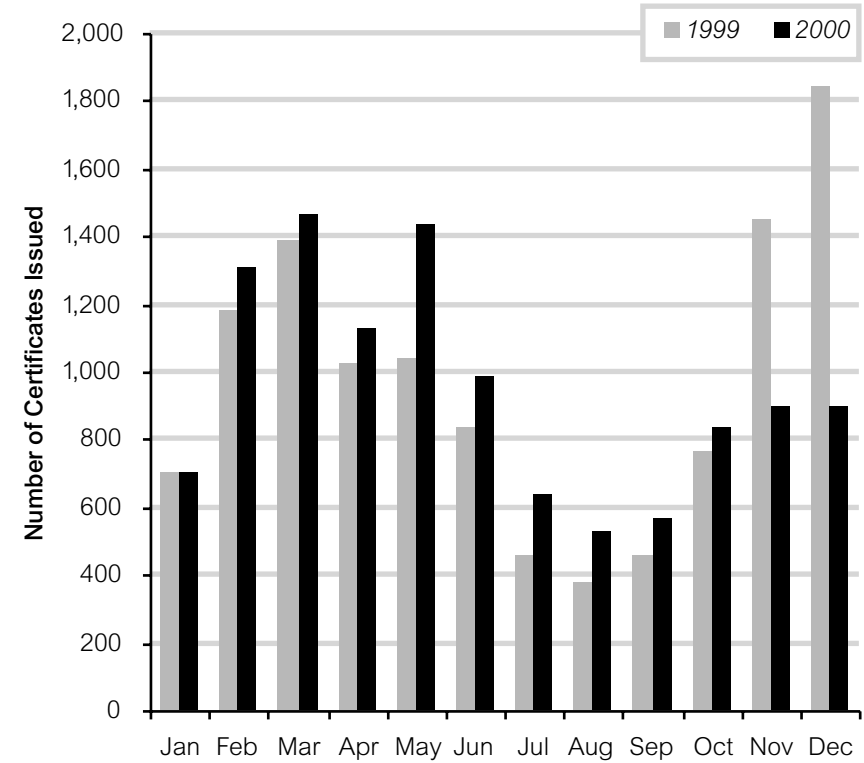


First Aid Certificates Issued

Level 1



Levels 2 and 3



Certificates Issued

	1999	% Total	2000	% Total	% Change
Level 1	59,852	71.6%	69,085	74.2%	13.1%
Levels 2 and 3	11,520	13.8%	11,384	12.2%	-13.9%
Transportation Endorsement	12,231	14.6%	12,669	13.6%	10.1%
Total	83,603	100.0%	93,138	100.0%	8.0%

Laboratory Services

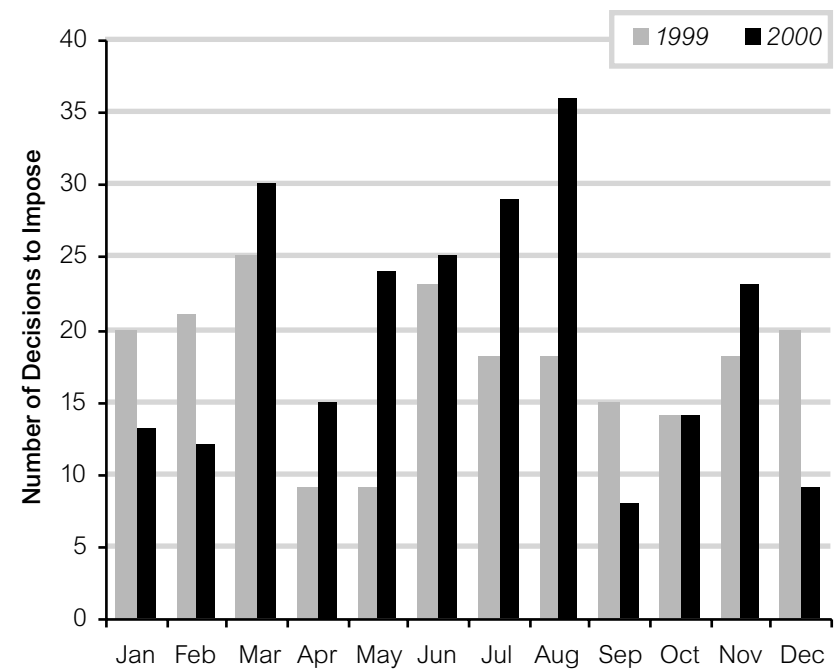
Laboratory Analyses

Number of	2000	1999	1998
Samples	2,606	2,748	2,613
Compliance Determinations	9,047	10,013	8,794
Quality Assurance Analyses	550	529	381
Field Equipment Transactions	3,208	2,198	2,087

Review and Penalty Activities

	2000	1999	% Change
Administrative Penalties			
Penalties Recommended	350	282	24.1%
Total \$ of Penalty Letters Issued	\$3,992,530	\$1,950,981	104.6%
Penalties Imposed (Number of)	238	210	13.3%
Penalties Imposed (\$)	\$1,288,648	\$1,241,079	3.8%
Warning Letters Issued	740	461	60.5%
Decision Reviews			
Decision Reviews (Number of)	125	33	278.8%
Discrimination Complaints			
Complaints (Number of)	165	0	-

Penalties



For more information about the WCB and its activities, refer to these publications:

Annual Reports

Workers' Compensation Board of British Columbia 2000 Annual Report

This comprehensive report contains operational highlights and financial reviews, and the administrative activities of the WCB.

Appeal Division 2000 Annual Report

A report of the Appeal Division, which covers the handling of new matters initiated and appeals from Review Board findings, is published in the *Workers' Compensation Reporter*.

Medical Review Panel 2000 Annual Report

A review of the year's activities, including the handling and results of applications, is published in the *Workers' Compensation Reporter*.

Criminal Injury Compensation Program of British Columbia 2000 Report

A review of the criminal injury claims received during 2000, including a summary of expenditures and sample decisions on claims. The *Criminal Injury Compensation Act* is administered by the WCB on behalf of the B.C. Ministry of Attorney General.

To order

For copies of these publications or for additional copies of the *Statistics 2000* report, contact:

Publications and Videos
Workers' Compensation Board
PO Box 5350 Stn Terminal
Vancouver BC V6B 5L5

Phone: 604 276-3068
Toll free: 1 800 661-2112, local 3068
Fax: 604 279-7406
E-mail: pubvid@wcb.bc.ca
Internet: www.worksafebc.com

