

WORKERS' COMPENSATION BOARD OF BRITISH COLUMBIA

STATISTICS 2002



effective change

WorkSafe™

Introduction

This report on statistics is published annually as a complement to the operational and financial reviews covered in the annual report of the Workers' Compensation Board of B.C.

WCB Statistics 2002 contains statistics on three key areas of operation: claims, assessments, and prevention. This information provides both a general overview of the workers' compensation system, and trends of key statistical indicators. To allow for valid comparisons, the format of the tables and exhibits have been kept as consistent as possible with those used in previous editions of this report.

In February 2000, the Workers' Compensation Board revised the system it uses to classify employers into classes and subclasses of industry. For administrative purposes, the revised classes are now known as sectors, and the revised subclasses are now known as subsectors. When the new classification structure was introduced, historical records were converted to the new structure. It is therefore possible in *WCB Statistics 2002* to publish statistical time series on a subsector basis.

There are a series of tables presented by subsector in *WCB Statistics 2002* that were presented by subclass in *Statistics 1999* and prior publications. These tables are: Tables A-1, Number of Claims First Paid in 2002 by Type of Claim and Subsector; Table A-1, Historical by Subsector; Table A-1, Number of Fatalities, 10-year Counts of Fatal Claims by Subsector; Table A-2, Claim

Costs Charged by Subsector and Type of Claim; Table B-1, Days Lost and Accident Type by Subsector; and Table B-2, Injury Rates and Claim Durations by Subsector. The "Classes of Industry" section, starting on page 53, lists the types of industrial activities that make up each subsector.

Since the introduction of the new classification system, a number of employers have been reclassified into new subsectors. In *WCB Statistics 2002*, the experience of these employers prior to their reclassification is tabulated in the subsectors the employers were originally assigned to, and the experience of these employers following their reclassifications is tabulated in the subsectors they have been reclassified into. The impact of the reclassifications is very minor at the subsector level.

This report is available on the WCB Worksafe™ Online web site at www.worksafebc.com by following the path: publications/reports/statistics_reports/default.asp. The publication *Occupational Injuries by Accident Type and Occupation in British Columbia, 1997–2001* is also available in that area of the web site. Abstracts of reports published by Statistical Services are also available in that same area.

For more detailed statistics on specific topics, contact the WCB Statistical Services Department at 604 276-3130, or send your information request by fax to 604 276-3290.

Contents

Claim Statistics

Reported Claims	4	Number of Claims First Paid in 2002 Analyzed by Subsector and Type of Claim (Table A-1)	18
Deaths Occurring in 2002 and Reported by February 20, 2003	5	Number of Claims First Paid in 1993–2002 Analyzed by Type of Claim (Table A-1 – Historical by Claim Type)	21
Claims Accepted for Fatal Benefits in 2002 According to Agency with Inspectional Jurisdiction	6	Total of Health-care-only, Short-term Disability, Long-term Disability, and Fatal Claims First Paid in the Year, by Subsector, for 2001 and 2002 (Table A-1 – Historical by Subsector)	22
Claims Accepted for Fatal Benefits, 1993–2002, by Category of Injury or Disease	7	Number of Claims Accepted for Fatal Benefits by Subsector and Year Accepted (Table A-1 – Number of Fatalities)	25
Number and Costs of Claims	8	Claims Accepted for Fatal Benefits in 2002 (Table A-1 – Fatality Descriptions)	28
Distribution by Type of Claim	8	Claim Costs Charged in 2002 by Subsector and Type of Claim (Claims from All Years) (Table A-2)	37
The Total Number of Work Injuries Reported and the Total Number of Short-term Disability, Long-term Disability, and Fatal Claims First Paid During Each of the Years 1993–2002	9	Claim Costs Charged in 1993–2002 by Type of Claim (Claims from All Years) (Table A-2 – Historical)	40
Compensation Cost by Type of Benefit	10	An Analysis by Subsector of the 61,529 Short-term Disability, Long-term Disability, and Fatal Claims First Paid in 2002 and an Analysis of the Number of Days Lost During 2002 on Claims for All Years (Table B-1)	41
Compensation Cost by Type of Claim	10	Days Lost, Average Weekly Wage, Average Age, and Breakdown by Gender for Short-term Disability, Long-term Disability, and Fatal Claims, 1993–2002 (Table B-1 – Historical)	45
Key Indicators in <i>WCB Statistics 2002</i>	11		
Days Lost From Work	14		
Percentage of Injuries by Gender of Worker	15		
Number of Claims and Claim Costs by Provincial Regional District for 2002	16		

Injury Rates and Claim Durations for Rateable Subsectors, 1998–2002 (Table B-2)	46
An Analysis by Year of Injury of the Total Days Lost During 2002 and the Number of Short-term Disability, Long-term Disability, and Fatal Claims First Paid in 2002 (Table C)	48
An Analysis by Sector of Industry, Gender, and Age Group of the Short-term Disability, Long-term Disability, and Fatal Claims First Paid in 2002 (Table D)	50
An Analysis by Injury of the Short-term Disability, Long-term Disability, and Fatal Claims First Paid, 1998–2002 (Table E)	51
Back Strain Claims (Excluding Health-care-only Claims) Paid for the First Time During 1993–2002 (Table F)	52

Assessment Statistics

Classes of Industry	53
Assessment Statistics (Rateable Employers)	66

Prevention Statistics

Breakdown of Field Officers' Worksite Time	67
Regional Services — Field Officers' Time	68
Prevention Division Call Centre — Number of Calls Received	69
First Aid Certificates Issued	70
Occupational Hygiene Technical Services	71
Review and Penalty Activity	71

Other Publications Available from the WCB

72

Claim Statistics

Reported Claims

The number of claims reported to the WCB in 2002 was 159,372 — a 7.4 percent decrease from the 172,103 claims reported in 2001.

Year	New Injuries Reported in the Year	Fatalities that Occurred in the Year and were Reported to the WCB by Feb 20 of the Following Year	Fatalities as a Percentage of New Injuries
1993	195,117	169	0.09%
1994	197,911	199	0.10%
1995	194,280	200	0.10%
1996	189,418	182	0.10%
1997	185,852	195	0.10%
1998	179,582	158	0.09%
1999	178,187	179	0.10%
2000	184,131	186	0.10%
2001	172,103	193	0.11%
2002	159,372	232	0.15%

First payment was made for 157 occupational deaths in 2002. Twenty-five of the 157 cases were pensioners who died from causes related to their compensable injuries or diseases. The 157 fatal claims first paid in 2002 cannot be compared to the 232 fatalities in the above chart because some of the fatalities first paid in 2002 occurred in and were reported in a prior year, and because some of the reported fatalities are not compensable. The 232 fatal claims tabulated in the above chart are broken down in the table on the opposite page. The 157 fatal claims first paid in 2002 are broken down by subsector in Table A-1.

Deaths Occurring in 2002 and Reported by February 20, 2003¹

	Adjudication Completed by February 20, 2003			Awaiting Adjudication or Application ² at February 20, 2003	Total Deaths Occurring in 2002 and Reported by February 20, 2003
	Accepted	Disallowed ³	Rejected ⁴		
Motor Vehicle Accidents	40	1	6	15	62
Other Injuries	58	1	2	11	72
Asbestos Exposure	31	3	0	4	38
Other Diseases	13	28	1	18	60
TOTAL	142	33	9	48	232

¹ There were 5 deaths that occurred in 2001 but were not included in last year's table; they were reported to the WCB after February 20, 2002. All the deaths in the above table occurred in 2002, but some of the accidents leading to the deaths occurred prior to 2002.

² Claims awaiting application typically involve cases where the deceased's relatives elect to sue a third party rather than claim compensation.

³ Disallowed claims are those that are judged to be not work related.

⁴ Rejected claims are those where the worker did not have WCB coverage. They were included in the "Awaiting Adjudication" column in previous versions of this table.

Claims Accepted for Fatal Benefits in 2002 According to Agency¹ with Inspectional Jurisdiction

	Workers' Compensation Board (Includes "Close-to-Shore" Fishing Fatalities) ²	Ministry of Mines	RCMP/Other Police		Transport Canada	Ministry of Transportation and Highways	Human Resources Devt. Canada Labour Program	All Agencies
			Motor Vehicle Accidents	Other				
MVA — Same Year ³	6	-	27	-	-	1	-	34
MVA — Prior Year	1	-	7	-	-	-	-	8
Other Injury — Same Year	35	1	1	1	7	-	-	45
Other Injury — Prior Year	12	1	-	1	1	-	-	15
Asbestos Exposure	37	2	-	-	-	-	1	40
Other Disease	12	3	-	-	-	-	-	15
TOTAL	103	7	35	2	8	1	1	157

¹ This classification according to agency is done by the WCB.

² As of January 1, 1995, the WCB assumed inspectional jurisdiction of "Close-to-Shore" Fishing Fatalities.

³ These categories have been revised from the categories used in prior editions of this table. "Same Year" means that the accident that led to the fatality occurred in the same year the claim was accepted; "Prior Year" means that the accident that led to the fatality occurred in a year prior to the year in which the claim was accepted.

Claims Accepted for Fatal Benefits, 1993–2002, by Category of Injury or Disease

Category of Injury or Disease	Year Accepted										1993– 2002
	1993	1994	1995	1996	1997	1998	1999	2000	2001	2002	
MVA — Same Year ¹	23	24	20	18	19	12	11	31	24	34	216
MVA — Prior Year	9	15	5	6	16	6	17	10	16	8	108
Other Injury — Same Year	43	56	54	53	70	29	43	42	52	45	487
Other Injury — Prior Year	18	21	18	30	14	26	21	16	17	15	196
Asbestos Exposure	12	21	22	35	26	29	34	35	39	40	293
Other Disease	19	15	15	12	19	23	21	22	20	15	181
TOTAL	124	152	134	154	164	125	147	156	168	157	1,481

¹ These categories have been revised from the categories used in previous editions of this table. “Same Year” means that the accident that led to the fatality occurred in the same year the claim was accepted; “Prior Year” means that the accident that led to the fatality occurred in a year prior to the year in which the claim was accepted.

Number and Costs of Claims

During the year 2002, 119,727 claims were paid for the first time. Of those:

- 58,198 were health-care-only claims (formerly called medical-aid-only claims)
- 56,410 were short-term disability claims (formerly called wage-loss claims)
- 4,962 were long-term disability claims (formerly called permanent disability claims)
- 157 were fatal claims

In 2002, the WCB set aside \$2,659,598 in capitalized values of pension awards for long-term disability benefits on hearing-loss claims.

Compensation costs totalled \$930,289,332 in 2002, compared to \$994,522,829 in 2001. The figures include health care benefits, vocational rehabilitation benefits, short-term disability benefits, and capitalized values of pension awards, which are reserves set aside for present and future payments of long-term disability benefits and survivor benefits. The 2002 figure excludes the \$1,119,936 increase in widows' pension entitlement as ruled by the B.C. Supreme Court, and the 2001 figure excludes \$694,321 for that reason. The benefit liabilities figures shown in Note 7 of the *WCB 2002 Annual Report* are calculated on a different basis and are not comparable to these total compensation costs.

Distribution by Type of Claim

	2002		2001	
	Cost	% of Total	Cost	% of Total
Health-care-only Claims	\$28,430,866	3.1%	\$29,032,562	2.9%
Short-term Disability Claims ¹	\$401,973,176	43.2%	\$462,531,823	46.5%
Long-term Disability Claims ²	\$464,108,071	49.9%	\$467,237,615	47.0%
Fatal Claims	\$35,777,219	3.8%	\$35,720,830	3.6%
TOTAL³	\$930,289,332⁴	100.0%	\$994,522,829⁴	100.0%

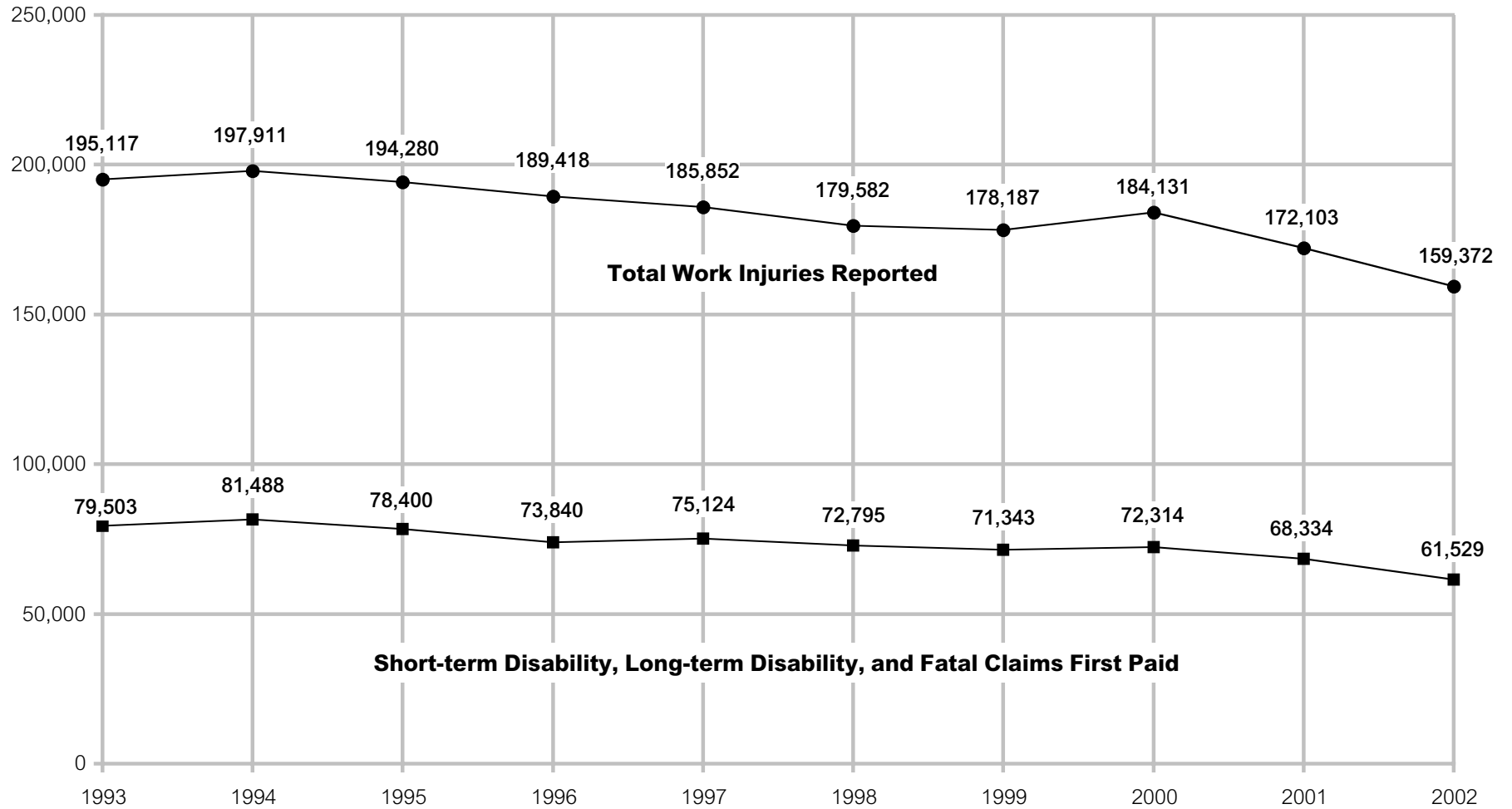
¹ Includes health care benefits paid on these claims.

² Includes health care and short-term disability benefits paid on these claims.

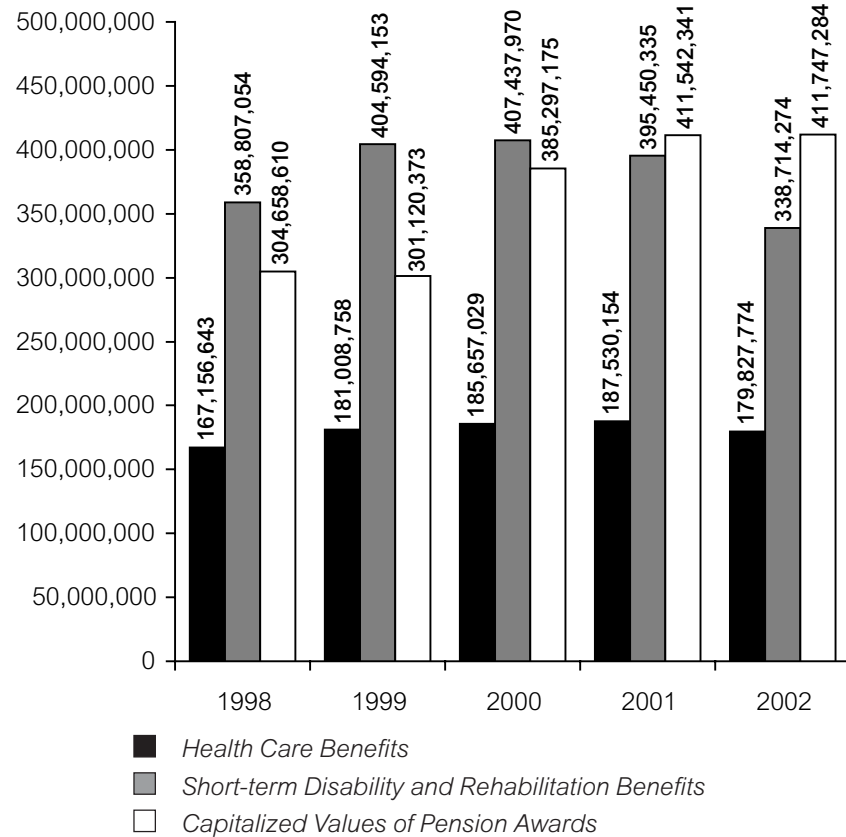
³ Due to rounding, totals may not balance.

⁴ The total cost of \$930,289,332 was calculated on a different basis than the total claim liability figure in Note 7 of the *WCB 2002 Annual Report*. Both the 2001 and 2002 cost totals exclude the increase in widows' pension entitlement arising from Bill 63 and the 1997 B.C. Supreme Court decision. A subsector breakdown of claim costs is provided in Table A-2 of this report.

The Total Number of Work Injuries Reported and the Total Number of Short-term Disability, Long-term Disability, and Fatal Claims First Paid During Each of the Years 1993–2002

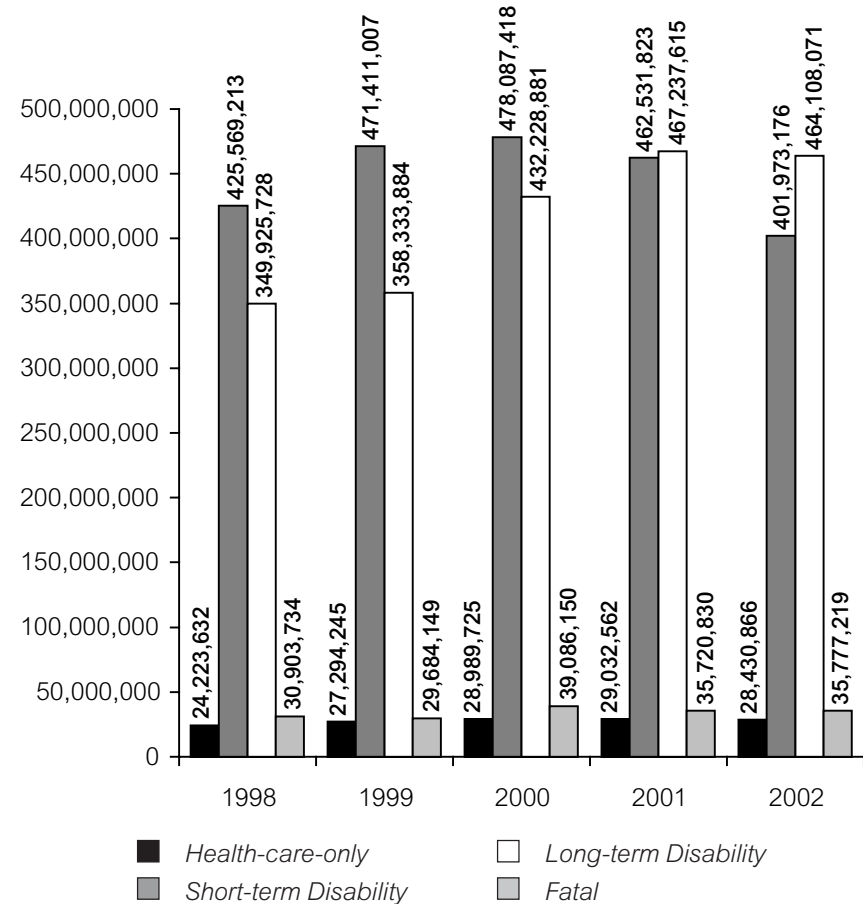


Compensation Cost by Type of Benefit



1998, 1999, 2000, 2001, and 2002 Capitalized Values of Pension Awards exclude the increase in widows' entitlement arising from Bill 63 and the 1997 B.C. Supreme Court decision.

Compensation Cost by Type of Claim



1998, 1999, 2000, 2001, and 2002 fatal costs exclude the increase in widows' entitlement arising from Bill 63 and the 1997 B.C. Supreme Court decision.

Key Indicators in *WCB Statistics 2002*

This series of charts of 10-year trends of statistical indicators first appeared in the *WCB 1992 Statistics* report. Although none of the indicators has changed dramatically from one year to the next, over the last 10 years there have been some significant trends.

In 1994, Bill 63 covered a number of industry groups for the first time under the *Workers Compensation Act*. The 10-year charts in this section include the Bill 63 industries for each of the 10 years to make the 10-year trend valid. (The statistics for 1993 have been adjusted to reflect what they likely would have been if Bill 63 had been in effect since 1993.) The five-year trend shown in Table B-2 is also on the “including Bill 63” basis.

The first chart shows claim duration as measured in days per claim. Five components of duration are shown on the chart: days lost per claim in the injury year, and days lost per claim in each of the four years following the injury year. This is the Association of Workers’ Compensation Boards of Canada (AWCBC) recommended method of showing duration that Canadian compensation systems have adopted as a standard. The chart indicates that duration has increased since 1996, but turned down in 2000.

The second chart shows that one of the WCB’s most important statistical indicators — the injury rate — has declined steadily since 1993. The injury rate is the number of claims per 100 person-years of covered employment (100 person-years is equivalent to 100 full-time employees). For the purpose of

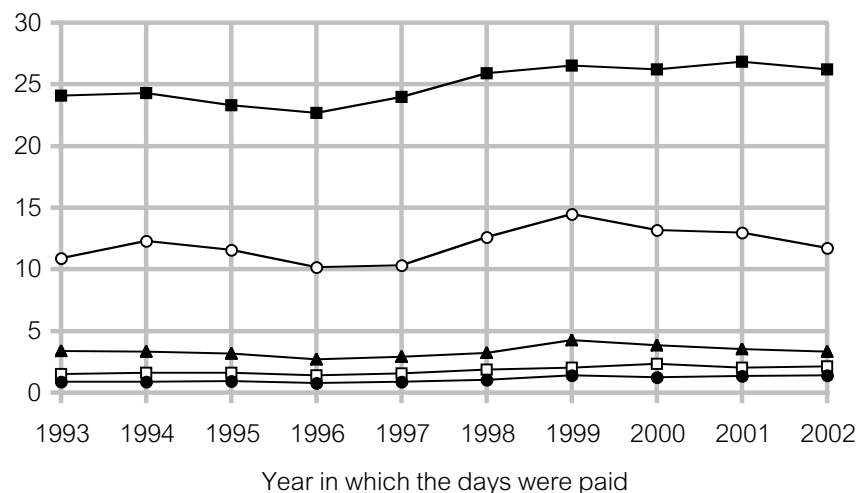
the injury rate calculation, the number of claims is the number of claims accepted for short-term disability, long-term disability, or survivor benefits either in the year of injury or in the first quarter of the following year. The estimates of person-years are based on gross payrolls that covered employers report to the Board.

The third indicator — the fatality rate — is related to the second indicator. The fatality rate is the number of accepted fatal claims per 100 person-years of covered employment. The fatality rate has turned up in the last few years, but the rates for the 1998–2002 period are slightly lower than the rates for the 1993–1997 period.

The fourth chart shows the percentage of short-term disability claims represented by claimants whose injuries were back strains. Back strains have accounted for approximately 25 percent of all short-term disability claims for each year in the past 10 years. It is the type of injury the WCB sees most often.

The last two charts reflect shifts in the population of covered workers. The fifth chart shows that the percentage of female claimants has increased from 24 percent in 1993 to 30 percent in 2002; the percentage did turn down slightly in 2002. The sixth chart shows that the percentage of claimants younger than 25 years of age has decreased from 18 percent in 1993 to 14 percent in 2002.

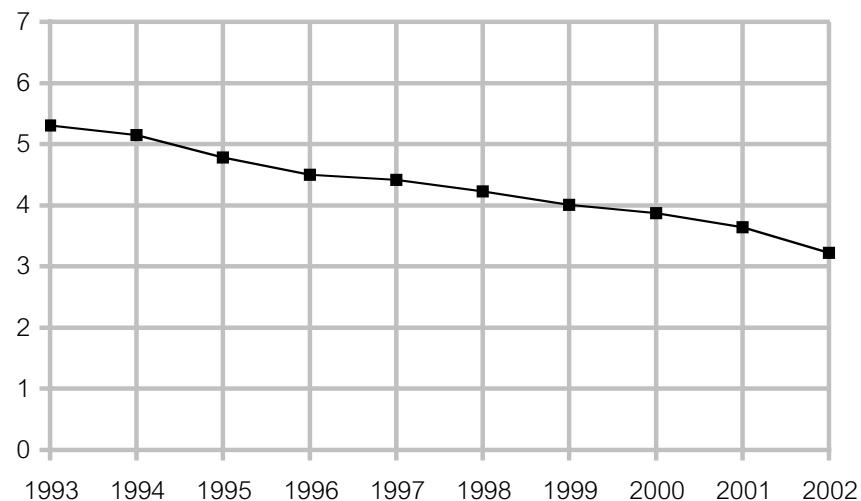
Number of days paid per claim



- Days paid per claim in the injury year
- Days paid per claim in the first year after the injury year
- ▲— Days paid per claim in the second year after the injury year
- Days paid per claim in the third year after the injury year
- Days paid per claim in the fourth year after the injury year

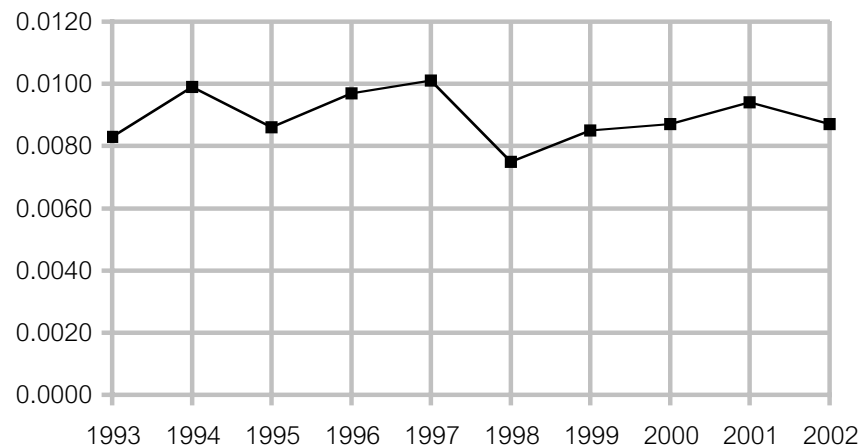
Injury rate (number of claims per 100 person-years of WCB-covered employment)

See footnote 1, Table B-2.
Includes the Bill 63 industries for all years, and is on the revised AWCBC basis "rated employers only" for all years.

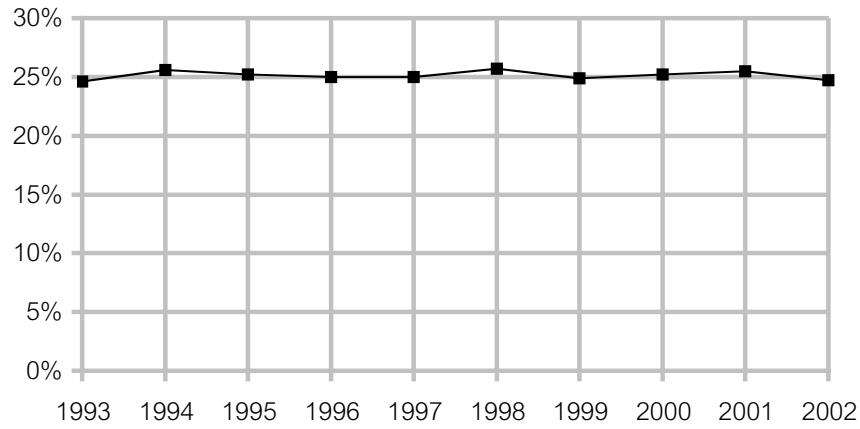


Fatality rate (number of accepted fatal claims per 100 person-years of WCB-covered employment)

Includes the Bill 63 industries for all years.

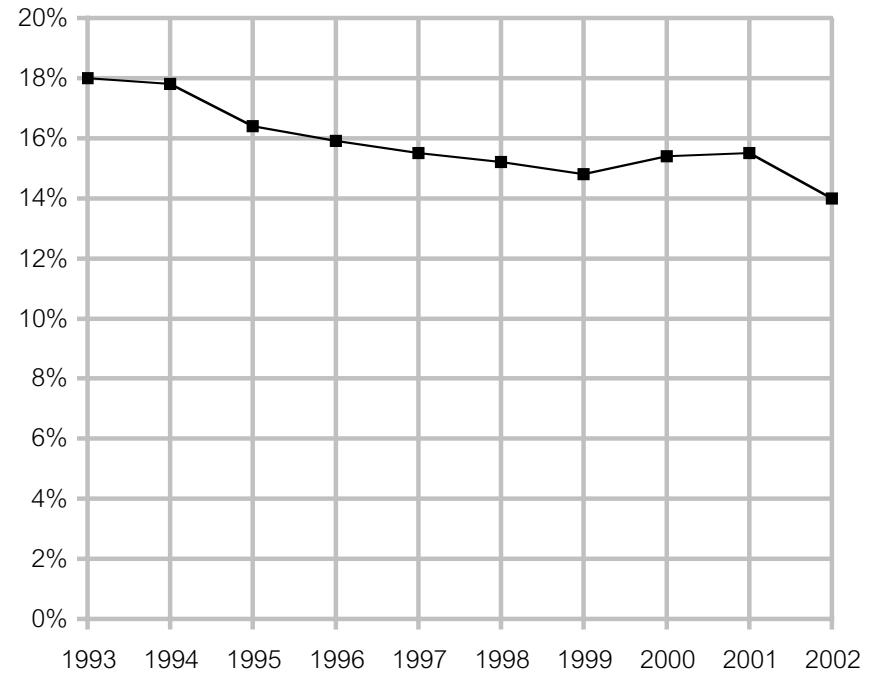


Percentage of claimants with back strains



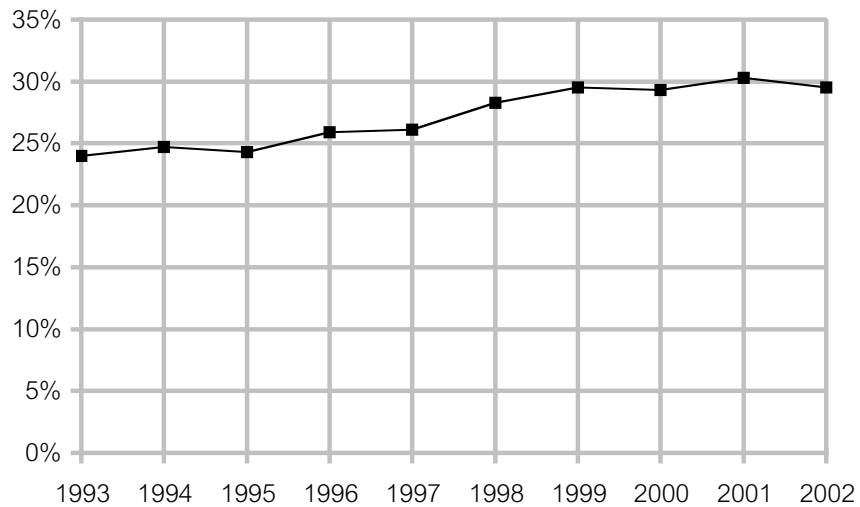
Based on claimants receiving a first payment of short-term disability or long-term disability benefits in these years

Percentage of claimants less than 25 years old



Based on claimants receiving a first payment of short-term disability or long-term disability benefits in these years

Percentage of claimants who are women



Based on claimants receiving a first payment of short-term disability or long-term disability benefits in these years

Days Lost From Work

There were 3,004,318 days lost from work during 2002 due to occupational injuries and diseases. The “days lost” in 2002 are the days paid in 2002 on current year and prior years’ injuries. Of the 3,004,318 days paid in 2002, 48.5 percent resulted from injuries and diseases that occurred in 2002, 26.1 percent resulted from injuries and diseases that occurred in 2001, and 25.4 percent resulted from injuries and diseases that occurred in 2000 and prior years.

The following is an analysis by sector and subsector of the days lost in the 1998–2002 period. The sectors and subsectors are described in “Classes of Industry” on page 53.

Sector/ Subsector	Description	Days Lost in the Year on Claims from All Years					Percent, 1998–2002	
		1998	1999	2000	2001	2002		
Sector 70 — Primary Resources								
7010	Agriculture	51,628	49,187	44,860	48,877	47,680	242,232	1.4%
7020	Fishing	30,266	31,943	30,302	29,325	26,321	148,157	0.9%
7030	Forestry	153,874	148,930	164,152	143,869	122,145	732,970	4.4%
7040	Oil and Gas or Mineral Resources	46,560	43,998	40,080	36,733	34,895	202,266	1.2%
	Total	282,328	274,058	279,394	258,804	231,041	1,325,625	7.9%
Sector 71 — Manufacturing								
7110	Food and Beverage Products	109,112	114,919	112,904	96,659	94,152	527,746	3.1%
7120	Metal and Non-metallic Mineral Products	153,664	175,487	158,484	139,372	118,987	745,994	4.4%
7130	Petroleum, Coal, Rubber, Plastic, and Chemical Products	32,291	35,299	40,684	38,351	30,352	176,977	1.1%
7140	Wood and Paper Products	236,274	235,445	251,261	208,131	193,424	1,124,535	6.7%
7150	Other Products	44,484	45,144	45,146	50,788	47,363	232,925	1.4%
	Total	575,825	606,294	608,479	533,301	484,278	2,808,177	16.7%
Sector 72 — Construction								
7210	General Construction	371,716	355,657	355,601	330,225	309,640	1,722,839	10.3%
7220	Heavy Construction	9,814	8,121	11,084	14,264	10,634	53,917	0.3%
7230	Road Construction or Maintenance	38,148	37,135	37,648	34,448	29,569	176,948	1.1%
	Total	419,678	400,913	404,333	378,937	349,843	1,953,704	11.6%
Sector 73 — Transportation and Warehousing								
7310	Warehousing	17,838	20,827	21,860	22,578	17,306	100,409	0.6%
7320	Transportation and Related Services	314,754	333,019	324,941	311,706	275,558	1,559,978	9.3%
	Total	332,592	353,846	346,801	334,284	292,864	1,660,387	9.9%

Sector/ Subsector	Description	Days Lost in the Year on Claims from All Years					1998–2002	Percent, 1998–2002
		1998	1999	2000	2001	2002		
Sector 74 — Trade								
7410	Retail	234,809	253,660	254,354	241,339	228,938	1,213,100	7.2%
7420	Wholesale	62,948	71,053	54,852	60,714	55,665	305,232	1.8%
	Total	297,757	324,713	309,206	302,053	284,603	1,518,332	9.0%
Sector 75 — Public Sector								
7530	Public Administration	84,729	87,300	91,718	74,350	70,416	408,513	2.4%
Sector 76 — Service Sector								
7610	Accommodation, Food, and Leisure Services	211,116	224,984	227,381	212,148	184,029	1,059,658	6.3%
7620	Business Services	28,894	33,725	32,755	28,825	25,739	149,938	0.9%
7630	Professional, Scientific, and Technical Services	33,543	38,468	33,066	38,986	38,272	182,335	1.1%
7640	Other Services	205,027	233,597	223,630	199,108	189,270	1,050,632	6.3%
7650	Education	72,797	82,266	79,365	80,668	67,342	382,438	2.3%
7660	Health Care and Social Assistance	387,913	458,910	448,375	412,010	345,825	2,053,033	12.2%
7670	Utilities	16,859	21,351	20,574	17,505	23,174	99,463	0.6%
	Total	956,149	1,093,301	1,065,146	989,250	873,651	4,977,497	29.6%
Sectors 81 to 84 — Deposit Accounts		97,482	128,789	137,556	112,761	102,919	579,507	3.5%
Section 39		272,760	337,567	249,301	386,819	314,991	1,561,438	9.3%
Other		0	151	0	3	-288	-134	0.0%
TOTAL		3,319,300	3,606,932	3,491,934	3,370,562	3,004,318	16,793,046	100.0%

Percentage of Injuries by Gender of Worker

The first payment of short-term disability, long-term disability, or survivor benefits was made on 61,529 claims during the year 2002, a decrease of 10.0 percent from the number made in 2001. Of these claimants, 70 percent were men and 30 percent were women.

Number of Claims and Claim Costs by Provincial Regional District^{1,2} for 2002

Provincial Regional District		Number of Short-term Disability ³ , Long-term Disability ⁴ , and Fatal Claims First Paid in 2002	Health Care, Short-term Disability ³ , Vocational Rehabilitation, Long-term Disability ⁴ , and Survivor Benefits Charged in 2002 ⁵
01	East Kootenay	780	\$27,528,000
02	Central Kootenay	630	\$17,284,000
02a	Kootenay-Boundary	320	\$8,952,000
03	Okanagan-Similkameen	970	\$15,204,000
04	Columbia-Shuswap	630	\$17,360,000
05	North Okanagan	1,000	\$18,558,000
06	Central Okanagan	2,220	\$23,021,000
07	Thompson-Nicola	1,540	\$26,952,000
08	Cariboo	720	\$19,324,000
09	Squamish-Lillooet	760	\$7,502,000
10	Fraser-Cheam	1,000	\$19,264,000
11	Central Fraser Valley	4,640	\$45,164,000
12	Dewdney-Alouette	1,350	\$13,215,000
13	Greater Vancouver	30,790	\$397,205,000
14	Sunshine Coast	320	\$5,566,000
15	Powell River	230	\$4,084,000
16	Mount Waddington	350	\$10,115,000
16a	Ocean Falls	30	\$443,000

Provincial Regional District		Number of Short-term Disability ³ , Long-term Disability ⁴ , and Fatal Claims First Paid in 2002	Health Care, Short-term Disability ³ , Vocational Rehabilitation, Long-term Disability ⁴ , and Survivor Benefits Charged in 2002 ⁵
17	Skeena-Queen Charlotte	290	\$6,432,000
18	Kitimat-Stikine	420	\$17,190,000
19	Bulkley-Nechako	420	\$14,337,000
20	Fraser-Fort George	1,300	\$28,385,000
21	Peace River-Liard	750	\$19,378,000
22	Stikine	5	\$24,000
23	Capital	5,420	\$66,214,000
24	Cowichan Valley	900	\$27,636,000
25	Nanaimo	1,790	\$27,994,000
26	Alberni-Clayoquot	580	\$14,403,000
27	Comox-Strathcona	1,380	\$32,675,000
TOTAL⁶		61,529	\$931,409,269

¹ Some claims are classified according to the location of the head office of the firm rather than according to the actual location where the injury occurred.

² Claims uncoded at year-end have been allocated proportionately to the regional districts.

³ *Short-term disability* is the new term for what was called *wage loss* in earlier versions of this table.

⁴ *Long-term disability claims* is the term for what were called *permanent disability claims* in earlier versions of this table.

⁵ Includes capitalized values of pension awards, not monthly pension payments. These figures include the \$1,119,936 increase in survivor benefits arising from Bill 63 and the 1997 B.C. Supreme Court Ruling. These claim costs are as charged in the year and, therefore, are on a different basis than the liabilities shown in Note 7 of the *WCB 2002 Annual Report*.

⁶ Due to rounding, the regional totals and the grand totals may not balance.

Number of Claims¹ First Paid in 2002 Analyzed by Subsector and Type of Claim²

Table A-1

Sector/ Subsector ³	Description ⁴	Health-care-only Claims ⁵	Short-term Disability Claims ⁶	Long-term Disability Claims ⁷	Fatal Claims	Overall Total
Sector 70 — Primary Resources						
7010	Agriculture	478	633	71	6	1,188
7020	Fishing	370	316	45	5	736
7030	Forestry	1,630	1,255	354	17	3,256
7040	Oil and Gas or Mineral Resources	965	285	140	8	1,398
	Total	3,443	2,489	610	36	6,578
Sector 71 — Manufacturing						
7110	Food and Beverage Products	1,573	2,532	161	1	4,267
7120	Metal and Non-metallic Mineral Products	3,824	3,004	364	12	7,204
7130	Petroleum, Coal, Rubber, Plastic, and Chemical Products	825	823	57	3	1,708
7140	Wood and Paper Products	6,422	2,996	686	6	10,110
7150	Other Products	1,250	1,299	67	1	2,617
	Total	13,894	10,654	1,335	23	25,906
Sector 72 — Construction						
7210	General Construction	5,974	5,056	696	24	11,750
7220	Heavy Construction	105	56	31	1	193
7230	Road Construction or Maintenance	419	310	82	1	812
	Total	6,498	5,422	809	26	12,755
Sector 73 — Transportation and Warehousing						
7310	Warehousing	272	451	22	0	745
7320	Transportation and Related Services	2,935	4,680	464	26	8,105
	Total	3,207	5,131	486	26	8,850

Sector/ Subsector ³	Description ⁴	Health-care-only Claims ⁵	Short-term Disability Claims ⁶	Long-term Disability Claims ⁷	Fatal Claims	Overall Total
Sector 74 — Trade						
7410	Retail	5,464	5,928	219	2	11,613
7420	Wholesale	1,151	1,556	88	3	2,798
	Total	6,615	7,484	307	5	14,411
Sector 75 — Public Sector						
7530	Public Administration	1,846	2,148	141	4	4,139
Sector 76 — Service Sector						
7610	Accommodation, Food, and Leisure Services	5,670	5,321	232	4	11,227
7620	Business Services	679	612	36	4	1,331
7630	Professional, Scientific, and Technical Services	1,089	811	35	2	1,937
7640	Other Services	4,659	4,213	356	14	9,242
7650	Education	2,168	2,116	103	1	4,388
7660	Health Care and Social Assistance	5,038	6,949	271	1	12,259
7670	Utilities	589	491	41	3	1,124
	Total	19,892	20,513	1,074	29	41,508
Sectors 81 to 84 — Deposit Accounts						
8108	Canadian Pacific Ltd. and Associated Companies	398	164	43	2	607
8110	Federal Government	662	73	32	1	768
8209	Burlington Northern Inc.	2	3	1	0	6

Sector/ Subsector ³	Description ⁴	Health-care-only Claims ⁵	Short-term Disability Claims ⁶	Long-term Disability Claims ⁷	Fatal Claims	Overall Total
8310	Canadian National Railways, Via Rail, Air Canada	393	644	13	0	1,050
8411	Government of the Province of B.C.	1,336	1,689	95	3	3,123
	Total	2,791	2,573	184	6	5,554
Section 39						
39(1)(d)	Disaster Reserves	0	0	0	0	0
39(1)(e)	Enhancement Reserves	0	2	0	1	3
	Total	0	2	0	1	3
Other⁸		12	-6	16	1	23
GRAND TOTAL		58,198	56,410	4,962	157	119,727

¹ Claims can be reported in one year and paid in the next; some of the paid claims in this table, therefore, are not part of the total of claims reported in the Reported Claims table.

² Claims can change "Type" categories from one year to the next. The claim counts by type are, therefore, adjusted in order that claims aren't double counted. For example, if a claim counted this year as a short-term disability claim in Table A-1 becomes a long-term disability claim next year, a count would be added to next year's long-term disability count and subtracted from next year's short-term disability count. The count of short-term disability claims in Table A-1 can, therefore, be thought of as being the number of claims that get short-term disability benefits but don't go on to get long-term disability or survivor benefits. Similar adjustments are made for changes between other type categories.

³ Some employers have been reclassified since their initial classification into a subsector. The above table reflects such changes completely for fatal claims, and as of the date of reclassification, not retroactively, for all other claims.

⁴ For a complete description of the subsector numbers, see "Classes of Industry" on page 53.

⁵ *Health-care-only claims* is the term for what were called *medical-aid-only claims* in earlier versions of this table.

⁶ *Short-term disability claims* is the term for what were called *temporary total claims* in earlier versions of this table.

⁷ *Long-term disability claims* is the term for what were called *permanent disability claims* in earlier versions of this table.

⁸ Includes claims uncoded to subsector at year-end.

Number of Claims First Paid in 1993–2002 Analyzed by Type of Claim

**Table A-1 — Historical
by Claim Type**

Year First Paid	Health-care-only Claims ¹	Short-term Disability Claims ²	Long-term Disability Claims ³	Fatal Claims	Overall Total
1993	56,186	75,601	3,778	124	135,689
1994	59,297	77,108	4,228	152	140,785
1995	68,823	73,762	4,504	134	147,223
1996	71,438	69,021	4,667	152	145,278
1997	73,020	70,745	4,215	164	148,144
1998	71,585	69,431	3,239	125	144,380
1999	65,398	68,671	2,525	147	136,741
2000	67,706	68,362	3,796	156	140,020
2001	61,989	64,165	4,001	168	130,323
2002	58,198	56,410	4,962	157	119,727
1993–2002	653,640	693,276	39,915	1,479	1,388,310

¹ *Health-care-only claims* is the term for what were called *medical-aid-only claims* in earlier versions of this table.

² *Short-term disability claims* is the term for what were called *temporary total claims* in earlier versions of this table.

³ *Long-term disability claims* is the term for what were called *permanent disability claims* in earlier versions of this table.

**Total of Health-care-only, Short-term Disability, Long-term Disability,
and Fatal Claims First Paid in the Year, by Subsector, for 2001 and 2002**

**Table A-1 —
Historical by Subsector**

Sector/ Subsector ¹	Description ²	Health-care-only Claims		STD/LTD/Fatal Claims		Total	
		2001	2002	2001	2002	2001	2002
Sector 70 — Primary Resources							
7010	Agriculture	494	478	809	710	1,303	1,188
7020	Fishing	353	370	381	366	734	736
7030	Forestry	1,857	1,630	1,913	1,626	3,770	3,256
7040	Oil and Gas or Mineral Resources	1,148	965	454	433	1,602	1,398
	Total	3,852	3,443	3,557	3,135	7,409	6,578
Sector 71 — Manufacturing							
7110	Food and Beverage Products	1,453	1,573	2,652	2,694	4,105	4,267
7120	Metal and Non-metallic Mineral Products	4,115	3,824	3,961	3,380	8,076	7,204
7130	Petroleum, Coal, Rubber, Plastic, and Chemical Products	879	825	1,025	883	1,904	1,708
7140	Wood and Paper Products	7,277	6,422	4,123	3,688	11,400	10,110
7150	Other Products	1,266	1,250	1,503	1,367	2,769	2,617
	Total	14,990	13,894	13,264	12,012	28,254	25,906
Sector 72 — Construction							
7210	General Construction	6,019	5,974	6,066	5,776	12,085	11,750
7220	Heavy Construction	231	105	228	88	459	193
7230	Road Construction or Maintenance	482	419	517	393	999	812
	Total	6,732	6,498	6,811	6,257	13,543	12,755

Sector/ Subsector ¹	Description ²	Health-care-only Claims		STD/LTD/Fatal Claims		Total	
		2001	2002	2001	2002	2001	2002
Sector 73 — Transportation and Warehousing							
7310	Warehousing	347	272	676	473	1,023	745
7320	Transportation and Related Services	2,935	2,935	5,653	5,170	8,588	8,105
	Total	3,282	3,207	6,329	5,643	9,611	8,850
Sector 74 — Trade							
7410	Retail	5,492	5,464	6,527	6,149	12,019	11,613
7420	Wholesale	1,350	1,151	1,834	1,647	3,184	2,798
	Total	6,842	6,615	8,361	7,796	15,203	14,411
Sector 75 — Public Sector							
7530	Public Administration	1,942	1,846	2,599	2,293	4,541	4,139
Sector 76 — Service Sector							
7610	Accommodation, Food, and Leisure Services	5,913	5,670	6,445	5,557	12,358	11,227
7620	Business Services	662	679	700	652	1,362	1,331
7630	Professional, Scientific, and Technical Services	1,100	1,089	955	848	2,055	1,937
7640	Other Services	4,877	4,659	4,845	4,583	9,722	9,242
7650	Education	2,368	2,168	2,444	2,220	4,812	4,388
7660	Health Care and Social Assistance	5,597	5,038	8,310	7,221	13,907	12,259
7670	Utilities	564	589	480	535	1,044	1,124
	Total	21,081	19,892	24,179	21,616	45,260	41,508

Sector/ Subsector ¹	Description ²	Health-care-only Claims		STD/LTD/Fatal Claims		Total	
		2001	2002	2001	2002	2001	2002
Sectors 81 to 84 — Deposit Accounts							
8108	Canadian Pacific Ltd. and Associated Companies	466	398	312	209	778	607
8110	Federal Government	683	662	156	106	839	768
8209	Burlington Northern Inc.	0	2	1	4	1	6
8310	Canadian National Railways, Via Rail, Air Canada	472	393	739	657	1,211	1,050
8411	Government of the Province of B.C.	1,596	1,336	2,019	1,787	3,615	3,123
	Total	3,217	2,791	3,227	2,763	6,444	5,554
Section 39							
39(1)(d)	Disaster Reserves	0	0	2	0	2	0
39(1)(e)	Enhancement Reserves	-1	0	2	3	1	3
	Total	-1	0	4	3	3	3
Other³		52	12	3	11	55	23
GRAND TOTAL		61,989	58,198	68,334	61,529	130,323	119,727

¹ Some employers have been reclassified since their initial classification into a subsector. The above table reflects such changes as of the date of reclassification, not retroactively.

² For a complete description of the subsector numbers, see "Classes of Industry" on page 53.

³ Includes claims first paid in 2001 and 2002 that were uncoded to subsector at year-end.

**Number of Claims Accepted for Fatal Benefits
by Subsector and Year Accepted¹**

**Table A-1 —
Number of Fatalities**

Sector/ Subsector	Description ²	Year Accepted for Fatal Benefits										1993– 2002
		1993	1994	1995	1996	1997	1998	1999	2000	2001	2002	
Sector 70 — Primary Resources												
7010	Agriculture	3	6	7	4	5	1	3	8	4	6	47
7020	Fishing	9	9	10	4	2	7	2	4	7	5	59
7030	Forestry	23	21	18	27	23	14	17	17	23	17	200
7040	Oil and Gas or Mineral Resources	7	12	10	4	8	8	7	8	8	8	80
	Total	42	48	45	39	38	30	29	37	42	36	386
Sector 71 — Manufacturing												
7110	Food and Beverage Products	0	1	1	0	1	1	1	0	2	1	8
7120	Metal and Non-metallic Mineral Products	10	10	11	11	12	10	21	13	14	12	124
7130	Petroleum, Coal, Rubber, Plastic, and Chemical Products	0	1	0	1	0	1	1	1	3	3	11
7140	Wood and Paper Products	2	8	10	7	10	7	6	6	2	6	64
7150	Other Products	0	0	1	0	1	0	0	2	0	1	5
	Total	12	20	23	19	24	19	29	22	21	23	212
Sector 72 — Construction												
7210	General Construction	15	18	17	22	20	15	27	30	29	24	217
7220	Heavy Construction	0	0	0	0	4	3	1	0	0	1	9
7230	Road Construction or Maintenance	3	4	4	4	6	3	2	1	3	1	31
	Total	18	22	21	26	30	21	30	31	32	26	257

Sector/ Subsector	Description ²	Year Accepted for Fatal Benefits										1993– 2002
		1993	1994	1995	1996	1997	1998	1999	2000	2001	2002	
Sector 73 — Transportation and Warehousing												
7310	Warehousing	0	0	1	2	1	1	1	0	2	0	8
7320	Transportation and Related Services	27	30	17	28	27	13	25	36	30	26	259
	Total	27	30	18	30	28	14	26	36	32	26	267
Sector 74 — Trade												
7410	Retail	1	4	0	1	2	2	0	3	3	2	18
7420	Wholesale	0	3	0	1	1	4	2	3	0	3	17
	Total	1	7	0	2	3	6	2	6	3	5	35
Sector 75 — Public Sector												
7530	Public Administration	1	5	2	7	7	4	2	3	5	4	40
Sector 76 — Service Sector												
7610	Accommodation, Food, and Leisure Services	7	2	6	6	4	5	3	6	4	4	47
7620	Business Services	0	2	0	0	2	2	3	0	2	4	15
7630	Professional, Scientific, and Technical Services	1	0	1	4	1	3	3	3	1	2	19
7640	Other Services	2	7	6	9	11	5	9	5	8	14	76
7650	Education	1	2	1	0	3	1	1	0	3	1	13
7660	Health Care and Social Assistance	1	2	3	1	0	4	0	0	2	1	14
7670	Utilities	2	0	0	2	3	1	2	1	1	3	15
	Total	14	15	17	22	24	21	21	15	21	29	199

Sector/ Subsector	Description ²	Year Accepted for Fatal Benefits										1993– 2002
		1993	1994	1995	1996	1997	1998	1999	2000	2001	2002	
Sectors 81 to 84 — Deposit Accounts												
8108	Canadian Pacific Ltd. and Associated Companies	1	2	3	1	4	6	2	5	4	2	30
8110	Federal Government	0	2	1	0	0	2	1	1	4	1	12
8310	Canadian National Railways, Via Rail, Air Canada	0	0	0	1	3	0	0	0	1	0	5
8411	Government of the Province of B.C.	6	0	3	3	3	1	5	0	3	3	27
	Total	7	4	7	5	10	9	8	6	12	6	74
Section 39												
39(1)(d)	Disaster Reserves	1	1	1	0	0	0	0	0	0	0	3
39(1)(e)	Enhancement Reserves	1	0	0	0	0	1	0	0	0	1	3
	Total	2	1	1	0	0	1	0	0	0	1	6
Other³		0	0	0	2	0	0	0	0	0	1	3
GRAND TOTAL		124	152	134	152	164	125	147	156	168	157	1,479

¹ Some claims accepted for fatal benefits have been previously accepted for long-term disability benefits. An example of claims in this category are disease claims like silicosis.

² Descriptions of the sectors and subsectors are in "Classes of Industry" on page 53.

³ One of these three fatals involved carcinogenic exposure in more than one subsector. The second occurred to a worker on a training course while on WCB benefits for another injury. The third fatality resulted principally from a workplace falling hazard, but a natural disease process was a contributing factor.

NOTE: Where employers have been reclassified into a different subsector, the above table reflects the reclassification for all ten years.

Claims Accepted for Fatal Benefits in 2002¹

Table A-1 — Fatality Descriptions

Subsector	Description ²	Year of Death	Occupation	Age ³	What Happened
7010	Agriculture	2002	Farm Hand	38	Worker was driving a tractor which rolled.
7010	Agriculture	2002	Labourer	55	Worker was found pinned under an overturned tractor in a flooded cranberry field.
7010	Agriculture	2002	Owner	63	Caught between canopy and operating control panel of an excavator.
7010	Agriculture	2001	Foreman	35	Fell and broke neck after overdose of medication being used to treat a work-related back injury.
7010	Agriculture	2002	Machine Operator	44	Worker was operating a cat. Got out and walked in front of the cat and was run over by it.
7010	Agriculture	2002	Farm Worker	28	Worker was pulled into rototiller blades.
7020	Fishing	2001	Deckhand	38	Fishboat sank. Worker presumed drowned.
7020	Fishing	2002	Fisherman	34	Wind blew exhaust fumes back into boat. Carbon monoxide exposure.
7020	Fishing	2002	Fisherman	40	Seine vessel capsized. Worker drowned.
7020	Fishing	2002	Fisherman	32	Seine vessel capsized. Worker drowned.
7020	Fishing	2002	Fisherman	37	Seine vessel capsized. Worker drowned.
7030	Forestry	2001	Owner	66	Motor vehicle accident involving multiple vehicles.
7030	Forestry	2002	Hooktender	42	Pinned between two logs.
7030	Forestry	2002	Faller	30	Worker struck by a falling tree.
7030	Forestry	2002	Truck Driver	49	Involved in motor vehicle accident. Truck was knocked off bridge.
7030	Forestry	2002	Heli-Logger	45	Worker fell 25 feet into a mountain stream and drowned.
7030	Forestry	2002	Skidder Operator	60	Skidder overturned, pinning the operator between the roll-over protection and the ground.

Subsector	Description ²	Year of Death	Occupation	Age ³	What Happened
7030	Forestry	2002	Faller	45	Struck by a falling tree.
7030	Forestry	2002	Faller	48	Boulder crushed worker against a previously felled tree.
7030	Forestry	2002	Truck Driver	54	Crushed under the wheels of a logging truck.
7030	Forestry	2002	Payload Operator	67	Driving payloader under conveyor belt. Struck head resulting in quadriplegia. Worker died of pneumonia.
7030	Forestry	2000	Truck Driver	49	Truck tire exploded, throwing worker to the ground. Worker suffered multiple fractures and internal injuries. Worker died of a heart attack.
7030	Forestry	2001	Owner-Operator	44	Single motor vehicle accident. Worker's vehicle ran off road.
7030	Forestry	2002	Faller	53	Struck by a falling snag.
7030	Forestry	2002	Contractor	41	Struck by a falling tree.
7030	Forestry	1974	Powersaw Operator	30	Fell into creek and drowned.
7030	Forestry	1996	Truck Driver	34	Worker was driving truck to job site when it veered over embankment.
7030	Forestry	2002	Tree Planter	34	Single motor vehicle accident.
7030	Forestry	2002	Contractor	42	Worker fell off tractor and was caught in mower.
7040	Oil, Gas, and Mining	2002	Well Tester	40	Motor vehicle accident. Head-on collision with another vehicle.
7040	Oil, Gas, and Mining	2002	Well Tester	27	Motor vehicle accident. Worker was a passenger in a vehicle that was involved in a head-on collision.
7040	Oil, Gas, and Mining	2002	HD Mechanic	43	Worker was moving a large shovel. He put a hammer on caliper to move track. Hammer flew out and struck worker.
7040	Oil, Gas, and Mining	2002	Miner	55	Exposure to asbestos. Mesothelioma.
7040	Oil, Gas, and Mining	2002	Miner	90	Exposure to silica. Silicosis.

Subsector	Description ²	Year of Death	Occupation	Age ³	What Happened
7040	Oil, Gas, and Mining	2002	Miner	76	Fall from elevation, resulting in paraplegia. Worker died from skin ulcers due to sepsis and renal failure.
7040	Oil, Gas, and Mining	2002	Miner	67	Exposure to silica. Silicosis.
7040	Oil, Gas, and Mining	2002	Miner	64	Exposure to silica. Silicosis.
7110	Food Products	2002	Consultant	41	Worker drowned in a wine tank attempting to rescue a co-worker.
7120	Mineral Products	2002	Pipefitter	60	Exposure to asbestos. Mesothelioma.
7120	Mineral Products	2002	Office Clerk	69	Exposure to asbestos. Mesothelioma.
7120	Mineral Products	2002	Moulder	75	Exposure to asbestos. Lung cancer.
7120	Mineral Products	2002	Millwright	65	Asbestos exposure. Mesothelioma.
7120	Mineral Products	2002	Shipping	70	Exposure to asbestos. Mesothelioma.
7120	Mineral Products	2002	Electrician	75	Exposure to asbestos. Mesothelioma.
7120	Mineral Products	2002	Dock Master	74	Exposure to asbestos at job sites. Mesothelioma.
7120	Mineral Products	2002	Shipwright	87	Exposure to asbestos on board marine vessels. Asbestosis.
7120	Mineral Products	1999	Engineer	65	Exposure to asbestos at job sites. Mesothelioma.
7120	Mineral Products	2001	Sheet Metal	64	Exposure to asbestos. Mesothelioma.
7120	Mineral Products	1996	Maintenance	64	Exposure to asbestos. Mesothelioma.
7120	Mineral Products	2002	Machinist	70	Exposure to asbestos. Asbestosis.
7130	Chemical Products	2002	Truck Driver	61	Benzene exposure while delivering gasoline. Biphenotypic leukemia.
7130	Chemical Products	2002	Maintenance	78	Exposure to asbestos. Mesothelioma.
7130	Chemical Products	2002	Truck Driver	59	Inhalation of dust and fumes containing crystalline silica. Scleroderma.

Subsector	Description ²	Year of Death	Occupation	Age ³	What Happened
7140	Wood and Paper	2002	Maintenance	61	Exposure to asbestos. Mesothelioma.
7140	Wood and Paper	2002	Mill Worker	55	Worker was crushed between a dump gate and a steel structural wall on a conveyor system.
7140	Wood and Paper	2001	Unknown	62	Worker was involved in an accident at work, resulting in paraplegia. Worker died of pneumonia.
7140	Wood and Paper	2002	Sawmill Worker	44	Worker fell from one level to another while on construction site, resulting in quadriplegia. Worker died from bleeding following tracheotomy.
7140	Wood and Paper	2002	Mill Worker	31	Crushed in plywood press infeed.
7140	Wood and Paper	2002	Installer	49	Wood splinter in finger resulted in worker developing sepsis at splinter site, leading to bacterial endocarditis.
7150	Other Products	2002	Mechanic	87	Exposure to silica.
7210	General Construction	2002	Insulator	47	Exposure to asbestos. Mesothelioma.
7210	General Construction	1997	Insulator	66	Exposure to asbestos. Asbestosis.
7210	General Construction	2002	Truck Driver	62	Worker was in a boom truck which contacted an overhead powerline. Electrocutation.
7210	General Construction	2002	Excavator Operator	58	A building being demolished collapsed onto worker.
7210	General Construction	2002	Mechanic	26	Fall from elevation.
7210	General Construction	2002	Ironworker	40	Overdose of medication being used to treat injuries that resulted from a 40 foot fall.
7210	General Construction	2002	Carpenter	66	Exposure to asbestos. Mesothelioma.
7210	General Construction	2002	Carpenter	62	Exposure to asbestos. Mesothelioma.
7210	General Construction	2002	Carpenter	51	Worker fell 27 feet through a skylight opening onto a concrete slab.

Subsector	Description ²	Year of Death	Occupation	Age ³	What Happened
7210	General Construction	2002	Carpenter	78	Worker died from chronic obstructive pulmonary disease resulting from a prior work-related injury. The prior injury was caused by a fall.
7210	General Construction	2002	Carpenter	73	Exposure to asbestos. Asbestosis.
7210	General Construction	2002	Driller	50	Exposure to asbestos. Mesothelioma.
7210	General Construction	2002	Labourer	76	Exposure to asbestos. Mesothelioma.
7210	General Construction	2002	Carpenter	43	Motor vehicle accident. Pickup truck worker was driving was struck by a semi-trailer.
7210	General Construction	2002	Equipment Operator	51	Crushed while loading an unsecured grader onto a low bed transport trailer.
7210	General Construction	2001	Insulator	74	Exposure to asbestos. Asbestosis.
7210	General Construction	2001	Insulator	65	Exposure to asbestos. Asbestosis.
7210	General Construction	2002	Painter	56	Exposure to asbestos. Mesothelioma.
7210	General Construction	2002	Drill Helper	55	Crushed by a boulder.
7210	General Construction	1998	Sheet Metal	72	Exposure to asbestos. Asbestosis.
7210	General Construction	2002	Installer	63	Exposure to asbestos. Mesothelioma.
7210	General Construction	2002	Plumber	80	Exposure to asbestos. Mesothelioma.
7210	General Construction	2001	Estimator	40	Motor vehicle accident. Worker was returning to office.
7210	General Construction	2002	Mechanic	76	Exposure to asbestos. Asbestosis.
7210	General Construction	2002	Construction	36	Fell 16 storeys through a plywood sheet.
7220	Heavy Construction	2002	Millwright	79	Exposure to asbestos. Mesothelioma.
7230	Road Construction	2002	Loader Operator	52	Mudslide swept worker and front-end loader into lake.
7320	Transportation and Related Services	2001	Instructor	40	Helicopter crash while on a training flight.

Subsector	Description ²	Year of Death	Occupation	Age ³	What Happened
7320	Transportation and Related Services	2002	Helicopter Pilot	74	Worker was electrocuted by a live wire while standing on a ladder. Thrown from ladder. Worker died of hepatitis C from blood transfusion.
7320	Transportation and Related Services	2002	Truck Driver	25	Single motor vehicle accident. Worker fell from garbage truck when passenger door flew open.
7320	Transportation and Related Services	2001	Truck Driver	65	Motor vehicle accident involving several vehicles.
7320	Transportation and Related Services	2002	Truck Driver	43	Motor vehicle accident. Truck overturned.
7320	Transportation and Related Services	2002	Truck Driver	45	Motor vehicle accident. Chip truck driver ran off icy road.
7320	Transportation and Related Services	2002	Owner	53	Forklift mast dropped on worker's head.
7320	Transportation and Related Services	2002	Truck Driver	39	Worker was crushed by a load of packaged lumber that slid off truck.
7320	Transportation and Related Services	2002	Truck Driver	48	Single motor vehicle accident.
7320	Transportation and Related Services	2002	Truck Driver	64	Motor vehicle accident. Collision between two trucks.
7320	Transportation and Related Services	2002	Truck Driver	28	Single motor vehicle accident. Truck went over embankment.
7320	Transportation and Related Services	2002	Truck Driver	63	Crushed by a heavy freight item while working at a loading dock.
7320	Transportation and Related Services	2002	Truck Driver	44	Single motor vehicle accident. Dump truck ran off road.
7320	Transportation and Related Services	2002	Truck Driver	53	Motor vehicle accident. Vehicle hit an elk and ran off the road.
7320	Transportation and Related Services	2002	Truck Driver	39	Single motor vehicle accident. Truck ran off road and overturned.
7320	Transportation and Related Services	2002	Helicopter Pilot	35	Helicopter crash.
7320	Transportation and Related Services	2002	Helicopter Pilot	42	Helicopter crash.
7320	Transportation and Related Services	2002	Helicopter Pilot	34	Helicopter crash.
7320	Transportation and Related Services	2001	Taxi Driver	21	Motor vehicle accident. Head-on collision with another vehicle.
7320	Transportation and Related Services	2002	Co-Pilot	26	Helicopter crash.

Subsector	Description ²	Year of Death	Occupation	Age ³	What Happened
7320	Transportation and Related Services	2002	Truck Driver	55	Log truck motor vehicle accident.
7320	Transportation and Related Services	2002	Truck Driver	44	Motor vehicle accident. Head-on collision with another truck, causing log load to shift and crush cab.
7320	Transportation and Related Services	2002	Truck Driver	61	Motor vehicle accident. Head-on collision with another truck.
7320	Transportation and Related Services	2002	Truck Driver	40	Motor vehicle accident.
7320	Transportation and Related Services	2002	Truck Driver	47	Motor vehicle accident. Log truck overturned and caught on fire.
7320	Transportation and Related Services	2002	Truck Driver	40	Motor vehicle accident. Log truck ran off road and rolled down embankment.
7410	Retail	2002	Driver	24	Motor vehicle accident.
7410	Retail	2002	Partner	40	Single motor vehicle accident.
7420	Wholesale	1998	Sales Representative	56	Heart attack.
7420	Wholesale	2002	Foam Cutter	58	Fell approximately 10 feet from top of foam pile.
7530	Public Administration	2002	Fish Survey	25	Worker was stranded on small island during rising tide. Attempted to swim to safety and drowned.
7530	Public Administration	2002	Firefighter	31	Motor vehicle accident. Fire truck rolled into ditch.
7530	Public Administration	2002	Pipefitter	71	Exposure to asbestos. Mesothelioma.
7530	Public Administration	1996	Firefighter	52	Exposure to various chemicals at the workplace. Colon cancer.
7610	Hotels, Food, and Leisure	2002	Ski Guide	37	Heli-skiing accident. Avalanche.
7610	Hotels, Food, and Leisure	2002	Supervisor	55	Exposure to asbestos. Mesothelioma.
7610	Hotels, Food, and Leisure	2002	Unknown	77	Exposure to asbestos. Mesothelioma.
7610	Hotels, Food, and Leisure	2002	Instructor	40	Hang glider fell approximately 1,000 feet to ground.
7620	Business Services	2002	Technician	41	Involved in a motor vehicle accident with a logging truck.

Subsector	Description ²	Year of Death	Occupation	Age ³	What Happened
7620	Business Services	2002	Pilot	44	Helicopter crash.
7620	Business Services	2002	Stenographer	59	Exposed to asbestos in office building. Mesothelioma.
7620	Business Services	2002	Adjuster	74	Motor vehicle accident.
7630	Technical Services	2002	Consultant	32	Single motor vehicle accident.
7630	Technical Services	2002	Assayer	63	Exposure to a variety of airborne carcinogens. Colon cancer.
7640	Other Services	2001	Auto Wrecker	49	Worker slipped and fell at work. Worker died at home two days later from subdermal hematoma.
7640	Other Services	2002	Mechanic	57	Exposure to asbestos. Mesothelioma.
7640	Other Services	2002	Carpenter	48	During the assembly of floating docks, worker fell between docks and sustained crushing injuries.
7640	Other Services	2002	HD Mechanic	43	Trailer slipped off of supports, crushing worker.
7640	Other Services	2002	Owner	65	Boat capsized. Suspected hypothermia.
7640	Other Services	2002	Labourer	34	Struck and pinned by a beam while working under a house.
7640	Other Services	2002	Foreman	41	Worker was onboard a zodiac when it exploded.
7640	Other Services	2001	Oilfield Worker	17	Worker was struck by a falling two-ton pipe.
7640	Other Services	2002	Loader Operator	26	Single motor vehicle accident. Vehicle overturned.
7640	Other Services	2001	Technician	20	Motor vehicle accident. Worker's vehicle rear-ended a tanker truck.
7640	Other Services	2001	Block Cutter	42	Worker was found under debris.
7640	Other Services	2002	Insulator	66	Asbestos exposure. Asbestosis.
7640	Other Services	2002	Security Guard	54	Motor vehicle accident involving multiple vehicles.
7640	Other Services	2002	Driver	26	Motor vehicle accident.
7640	Other Services	2001	Siding Installer	38	Worker struck finger while hammering nail into wall. Puncture wound, resulting in infection.

Subsector	Description ²	Year of Death	Occupation	Age ³	What Happened
7650	Education	2002	Instructor	32	Single motor vehicle accident. Vehicle went over embankment.
7660	Health Care	2002	Famine Rep.	46	Involved in motor vehicle accident.
7670	Utilities	2002	Tradesman	58	Accidental drowning in hot tub as a result of medications being used to treat a work-related injury.
7670	Utilities	1996	Welder	53	Exposure to gases. Severe emphysema, lung cancer, and heart failure.
7670	Utilities	2001	Operator	48	Worker was involved in a motor vehicle accident while attending a course.
8108	Canadian Pacific Ltd. and Associated Companies	2002	Lineman	54	Exposure to asbestos at work. Mesothelioma.
8108	Canadian Pacific Ltd. and Associated Companies	1997	Crane Operator	69	Exposure to asbestos at work site. Lung cancer.
8110	Federal Government	2001	Carpenter	67	Exposure to asbestos.
8411	Government of the Province of B.C.	2002	Data Analyst	39	Single motor vehicle accident. Lost control of vehicle on a curve. Vehicle rolled.
8411	Government of the Province of B.C.	2002	Technician	54	Murdered. Shot by co-worker.
8411	Government of the Province of B.C.	2001	Engineer	67	Exposure to asbestos at the worksite. Asbestosis and lung cancer.
	Section 39 of The Act	1997	Firefighter	61	Prolonged exposure to harmful substances. Brain cancer.

¹ This table provides descriptions of the fatal claims accepted in 2002. There are 158 fatalities listed in this table. The count of fatal claims accepted in 2002 shown in Table A-1 is 157. The count of 157 reflects a -1 count arising from a claim disallowed in 2002 that had been accepted in a prior year.

² For a complete description of the subsector number, see "Classes of Industry" starting on page 53.

³ Age at time of death of worker.

Claim Costs Charged in 2002 by Subsector and Type of Claim (Claims from All Years)

Table A-2

Sector/ Subsector ¹	Description ²	Costs for Health-care-only Claims ³	Costs for Short-term Disability Claims (Includes Health Care and Rehab Costs) ⁴	Costs for Long-term Disability Claims (Includes Health Care and Rehab Costs) ⁵	Survivor Benefits (Includes Health Care and Rehab Costs) ⁶	Overall Total ⁷
Sector 70 — Primary Resources						
7010	Agriculture	125,088	4,301,821	3,346,619	523,940	8,297,469
7020	Fishing	226,137	2,881,962	4,504,807	911,465	8,524,371
7030	Forestry	1,179,751	20,239,950	45,642,461	5,277,460	72,339,622
7040	Oil and Gas or Mineral Resources	661,154	5,932,590	13,980,071	2,444,635	23,018,451
	Total	2,192,130	33,356,324	67,473,959	9,157,501	112,179,913
Sector 71 — Manufacturing						
7110	Food and Beverage Products	323,779	11,057,583	8,403,063	2,743	19,787,168
7120	Metal and Non-metallic Mineral Products	1,250,432	18,684,540	29,282,962	1,017,970	50,235,904
7130	Petroleum, Coal, Rubber, Plastic and Chemical Products	183,622	3,835,956	4,361,703	377,214	8,758,494
7140	Wood and Paper Products	2,903,006	30,278,799	50,672,657	1,573,892	85,428,355
7150	Other Products	204,299	5,588,971	5,163,981	360,466	11,317,718
	Total	4,865,137	69,445,849	97,884,367	3,332,285	175,527,639
Sector 72 — Construction						
7210	General Construction	2,048,021	40,001,329	65,967,947	4,720,385	112,737,681
7220	Heavy Construction	69,959	1,467,587	3,911,832	145,219	5,594,597
7230	Road Construction or Maintenance	220,376	4,018,549	7,562,737	804,856	12,606,518
	Total	2,338,356	45,487,464	77,442,516	5,670,460	130,938,796
Sector 73 — Transportation and Warehousing						
7310	Warehousing	60,373	2,094,967	1,090,024	0	3,245,365
7320	Transportation and Related Services	1,177,560	35,713,511	35,851,528	3,682,249	76,424,848
	Total	1,237,933	37,808,478	36,941,552	3,682,249	79,670,213

Sector/ Subsector ¹	Description ²	Costs for Health-care-only Claims ³	Costs for Short-term Disability Claims (Includes Health Care and Rehab Costs) ⁴	Costs for Long-term Disability Claims (Includes Health Care and Rehab Costs) ⁵	Survivor Benefits (Includes Health Care and Rehab Costs) ⁶	Overall Total ⁷
Sector 74 — Trade						
7410	Retail	797,144	19,708,125	11,745,111	303,017	32,553,397
7420	Wholesale	224,024	6,825,881	5,773,925	350,928	13,174,757
	Total	1,021,168	26,534,005	17,519,036	653,946	45,728,155
Sector 75 — Public Sector						
7530	Public Administration	491,351	10,873,611	7,954,113	730,526	20,049,602
Sector 76 — Service Sector						
7610	Accommodation, Food, and Leisure Services	893,213	15,757,017	10,971,263	1,484,744	29,106,237
7620	Business Services	159,007	3,177,371	3,040,144	1,221,766	7,598,288
7630	Professional, Scientific, and Technical Services	217,479	5,261,672	1,688,183	404,024	7,571,357
7640	Other Services	1,387,522	24,162,200	21,341,541	2,682,768	49,574,031
7650	Education	537,717	9,763,438	5,327,926	3,304	15,632,384
7660	Health Care and Social Assistance	822,110	40,126,930	18,692,968	658,393	60,300,400
7670	Utilities	281,849	3,678,002	4,274,728	937,036	9,171,615
	Total	4,298,896	101,926,629	65,336,753	7,392,036	178,954,314
Sectors 81 to 84 — Deposit Accounts						
8108	Canadian Pacific Ltd. and Associated Companies	273,909	2,091,945	5,337,948	261,454	7,965,255
8110	Federal Government	200,314	5,857,241	546,925	10,193	6,614,673
8209	Burlington Northern Inc.	850	30,385	118,766	0	150,001
8310	Canadian National Railways, Via Rail, Air Canada	108,192	2,874,371	986,242	0	3,968,804
8411	Government of the Province of B.C.	403,443	8,998,988	7,281,223	543,021	17,226,674
	Total	986,708	19,852,928	14,271,104	814,668	35,925,408

Sector/ Subsector ¹	Description ²	Costs for Health-care-only Claims ³	Costs for Short-term Disability Claims (Includes Health Care and Rehab Costs) ⁴	Costs for Long-term Disability Claims (Includes Health Care and Rehab Costs) ⁵	Survivor Benefits (Includes Health Care and Rehab Costs) ⁶	Overall Total ⁷
Section 39						
39(1)(d)	Disaster Reserves	999	7,566	59,910	0	68,475
39(1)(e)	Enhancement Reserves	4,933	42,526,101	70,282,027	998,932	113,811,993
	Total	5,932	42,533,667	70,341,936	998,932	113,880,467
	Reinstatement of Widows' Benefits⁸	0	0	0	1,119,936	1,119,936
	Other Costs Including Investigation and Unclassified⁹	10,993,254	14,154,220	8,942,736	3,344,617	37,434,828
	GRAND TOTAL¹⁰	28,430,866	401,973,176	464,108,071	36,897,155	931,409,269

¹ Some employers have been reclassified since their initial classification into a subsector. The above table reflects such changes as of the date of reclassification, not retroactively.

² For a complete description of the subsector number, see "Classes of Industry" starting on page 53.

³ *Health-care-only claims* is the term for what were called *medical-aid-only claims* in earlier versions of this table.

⁴ *Short-term disability claims* is the term for what were called *temporary total claims* in earlier versions of this table.

⁵ *Long-term disability claims* is the term for what were called *permanent disability claims* in earlier versions of this table.

⁶ *Survivor benefits* is the term for what were called *costs for fatal claims* in earlier versions of this table.

⁷ These claim costs are calculated on a different basis than the benefit liabilities shown in Note 7 of the *WCB 2002 Annual Report*.

⁸ These additional survivor benefits arose from the 1997 B.C. Supreme Court decision regarding the reinstatement of widows' benefits.

⁹ All rehab costs were included in "Other Costs" in 1997 and prior versions of this table. Since 1998, rehab costs are shown in this table in the subsector in which the costs were incurred.

¹⁰ Due to rounding, the sector and subsector totals may not balance.

Claim Costs Charged in 1993–2002 by Type of Claim (Claims from All Years)

Table A-2 — Historical

Year Charged	Costs for Health-care-only Claims ¹	Costs for Short-term Disability Claims (Includes Health Care and Rehab Costs) ²	Costs for Long-term Disability Claims (Includes Health Care and Rehab Costs) ³	Survivor Benefits (Includes Health Care and Rehab Costs) ⁴	Overall Total ⁵
1993 ⁶	18,400,564	354,506,872	324,549,133	115,971,993	813,428,562
1994 ⁶	21,654,142	388,553,760	304,501,413	52,088,831	766,798,146
1995	23,809,585	381,635,446	285,330,652	29,082,255	719,857,938
1996	22,663,943	338,494,634	335,071,830	38,863,587	735,093,994
1997 ⁶	21,526,708	361,078,208	343,490,572	410,040,756	1,136,136,244
1998 ⁶	24,223,632	425,569,213	349,925,728	34,747,392	834,465,964
1999 ⁶	27,294,245	471,411,007	358,333,884	36,712,963	893,752,100
2000 ⁶	28,989,725	478,087,418	432,228,881	45,035,092	984,341,116
2001 ⁶	29,032,562	462,531,823	467,237,615	36,415,150	995,217,150
2002 ⁶	28,430,866	401,973,176	464,108,071	36,897,155	931,409,269
1993–2002⁷	246,025,971	4,063,841,557	3,664,777,780	835,855,175	8,810,500,483

¹ *Health-care-only claims* is the term for what were called *medical-aid-only claims* in earlier versions of this table.

² *Short-term disability claims* is the term for what were called *temporary total claims* in earlier versions of this table.

³ *Long-term disability claims* is the term for what were called *permanent disability claims* in earlier versions of this table.

⁴ *Survivor benefits* is the term for what were called *costs for fatal claims* in earlier versions of this table.

⁵ These claim costs are calculated on a different basis than the benefit liabilities shown in Note 7 of the *WCB 2002 Annual Report*.

⁶ Survivor benefits in 1993, 1994, and 1997 to 2002 include the additional reserves required by Bill 63 and the 1997 B.C. Supreme Court decision, both of which increased the benefit entitlement of dependants of deceased workers. These amounts were: 1993 — \$90,414,635, 1994 — \$15,555,606, 1997 — \$377,426,893, 1998 — \$3,843,658, 1999 — \$7,028,815, 2000 — \$5,948,941, 2001 — \$694,321, and 2002 — \$1,119,936. The overall totals minus these amounts for these seven years are: 1993 — \$723,013,927, 1994 — \$751,242,540, 1997 — \$758,709,351, 1998 — \$830,622,306, 1999 — \$886,723,285, 2000 — \$978,392,175, 2001 — \$994,522,829, and 2002 — \$930,289,332.

⁷ Due to rounding, the subtotals and totals may not balance.

**An Analysis by Subsector of the 61,529 Short-term Disability¹,
Long-term Disability², and Fatal Claims First Paid in 2002 and
an Analysis of the Number of Days Lost During 2002 on Claims for All Years**

Table B-1

Short-term Disability, Long-term Disability, and Fatal Claims First Paid in 2002														
		Number of Claims by Type of Accident ³												
Sector/ Subsector ⁴	Description ⁵	Days Lost ⁶ in 2002 on Claims for All Years	Avg. Weekly Wage	No. of Claims	Struck Against	Struck By	Falls from Eleva- tion	Falls on Same Level	Caught In	Rubbed or Abraded	Over- exertion, Bodily Motion ⁷	Harmful Sub- stances	Trans- port- ation	Miscel- laneous
Sector 70 — Primary Resources														
7010	Agriculture	47,680	454	710	50	135	110	70	50	5	215	15	30	30
7020	Fishing	26,321		366	15	75	10	25	15	0	140	20	60	5
7030	Forestry	122,145	1005	1,626	65	390	255	230	65	20	390	80	115	15
7040	Oil and Gas or Mineral Resources	34,895	853	433	10	60	50	30	30	5	145	55	40	10
	Total	231,041	783	3,135	140	660	425	355	160	30	890	170	245	60
Sector 71 — Manufacturing														
7110	Food and Beverage Products	94,152	623	2,694	170	430	160	315	180	10	1,235	100	85	10
7120	Metal and Non-metallic Mineral Products	118,987	774	3,381	235	735	190	140	270	185	1,305	225	50	45
7130	Petroleum, Coal, Rubber, Plastic, and Chemical Products	30,352	610	883	70	145	45	90	80	15	375	45	15	5
7140	Wood and Paper Products	193,424	697	3,688	370	665	230	240	405	55	1,480	165	60	20
7150	Other Products	47,363	568	1,366	130	310	100	100	80	30	555	35	15	10
	Total	484,278	681	12,012	975	2,285	725	885	1,015	295	4,950	570	225	90

Short-term Disability, Long-term Disability, and Fatal Claims First Paid in 2002

Number of Claims by Type of Accident³

Sector/ Subsector ⁴	Description ⁵	Days Lost ⁶ in 2002 on Claims for All Years	Avg. Weekly Wage	No. of Claims	Number of Claims by Type of Accident ³									
					Struck Against	Struck By	Falls from Eleva- tion	Falls on Same Level	Caught In	Rubbed or Abraded	Over- exertion, Bodily Motion ⁷	Harmful Sub- stances	Trans- port- ation	Miscel- laneous
Sector 72 — Construction														
7210	General Construction	309,640	720	5,775	445	1,180	980	375	175	145	2,105	210	130	30
7220	Heavy Construction	10,634	884	89	0	25	10	5	0	10	20	10	5	5
7230	Road Construction or Maintenance	29,569	832	393	15	60	45	35	10	10	155	15	45	5
	Total	349,843	730	6,257	460	1,265	1,035	415	185	165	2,280	235	180	40
Sector 73 — Transportation and Warehousing														
7310	Warehousing	17,306	636	476	30	65	40	35	20	10	225	5	40	5
7320	Transportation and Related Services	275,558	803	5,168	175	610	640	505	120	30	2,160	115	710	105
	Total	292,864	785	5,644	205	675	680	540	140	40	2,385	120	750	110
Sector 74 — Trade														
7410	Retail	228,938	506	6,149	465	980	355	545	155	50	3,190	105	165	140
7420	Wholesale	55,665	576	1,646	90	240	150	130	80	15	780	25	125	10
	Total	284,603	521	7,795	555	1,220	505	675	235	65	3,970	130	290	150
Sector 75 — Public Sector														
7530	Public Administration	70,416	850	2,293	135	245	185	215	50	25	1,145	100	100	95

Short-term Disability, Long-term Disability, and Fatal Claims First Paid in 2002

Sector/ Subsector ⁴	Description ⁵	Days Lost ⁶ in 2002 on Claims for All Years	Avg. Weekly Wage	No. of Claims	Number of Claims by Type of Accident ³									
					Struck Against	Struck By	Falls from Eleva- tion	Falls on Same Level	Caught In	Rubbed or Abraded	Over- exertion, Bodily Motion ⁷	Harmful Sub- stances	Trans- port- ation	Miscel- laneous
Sector 76 — Service Sector														
7610	Accommodation, Food, and Leisure Services	184,029	437	5,555	430	1,140	345	955	85	25	1,705	660	85	125
7620	Business Services	25,739	663	652	35	65	55	85	20	5	280	20	60	25
7630	Professional, Scientific, and Technical Services	38,272	815	848	50	100	110	115	15	15	320	15	60	50
7640	Other Services	189,270	667	4,583	325	755	405	410	160	115	1,905	220	185	100
7650	Education	67,342	852	2,220	115	240	210	395	35	15	1,040	70	35	65
7660	Health Care and Social Assistance	345,825	796	7,223	260	575	190	760	100	15	4,450	305	110	455
7670	Utilities	23,174	1022	535	25	35	75	55	5	5	270	20	30	15
	Total	873,651	686	21,616	1,240	2,910	1,390	2,775	420	195	9,970	1,310	565	835
Sectors 81 to 84 — Deposit Accounts														
8108	Canadian Pacific Ltd. and Associated Companies	13,748	735	209	10	20	10	15	10	0	110	15	15	5
8110	Federal Government	9,886	725	106	5	10	10	15	0	0	50	0	5	10
8209	Burlington Northern Inc.	139		4	0	0	0	0	0	0	5	0	0	0
8310	Canadian National Railways, Via Rail, Air Canada	21,295	1043	657	45	50	45	55	20	5	365	25	30	15
8411	Government of the Province of B.C.	57,851	865	1,787	85	160	95	170	25	10	930	70	120	120
	Total	102,919	875	2,763	145	240	160	255	55	15	1,460	110	170	150

Short-term Disability, Long-term Disability, and Fatal Claims First Paid in 2002

Sector/ Subsector ⁴	Description ⁵	Days Lost ⁶ in 2002 on Claims for All Years	Avg. Weekly Wage	No. of Claims	Struck Against	Struck By	Number of Claims by Type of Accident ³							
							Falls from Eleva- tion	Falls on Same Level	Caught In	Rubbed or Abraded	Over- exertion, Bodily Motion ⁷	Harmful Sub- stances	Trans- port- ation	Miscel- laneous
Section 39														
39(1)(d)	Disaster Reserves	110		0	0	0	0	0	0	0	0	0	0	0
39(1)(e)	Enhancement Reserves	314,881		3	0	0	0	0	0	0	5	0	0	0
	Total	314,991		3	0	0	0	0	0	0	5	0	0	0
Other⁸		-288		11	0	0	0	0	0	0	5	5	0	0
GRAND TOTAL		3,004,318	699	61,529	3,855	9,500	5,105	6,115	2,260	830	27,060	2,750	2,525	1,530

¹ Short-term disability claims is the term for what were called *wage-loss claims* in earlier versions of this table.

² Long-term disability claims is the term for what were called *permanent disability claims* in earlier versions of this table.

³ Claim counts by type of accident have been adjusted for the effect of uncoded claims and therefore appear as rounded numbers.

⁴ Some employers have been reclassified since their initial classification into a subsector. The above table reflects such changes as of the date of reclassification, not retroactively.

⁵ The sectors and subsectors are described in "Classes of Industry" on page 53.

⁶ "Days lost" are as paid in the year on current- and prior-year claims.

⁷ Overexertion and bodily motion incidents usually result in strains, tenosynovitis, and related conditions.

⁸ Includes claims uncoded to subsector at year-end.

Days Lost, Average Weekly Wage, Average Age, and Breakdown by Gender for Short-term Disability, Long-term Disability, and Fatal Claims, 1993–2002

Table B-1 — Historical¹

Year	Total Days Lost ² in the Year	Average Weekly Wage of Claimant ³	Average Age of Claimant ³	Number of Short-term Disability, Long-term Disability, and Fatal Claims First Paid in the Year, by Gender		
				Males ⁴	Females ⁴	Total
1993	3,271,064	614	35.8	60,400	19,105	79,503
1994	3,430,119	623	35.9	61,450	20,040	81,488
1995	3,211,740	646	36.4	59,480	18,920	78,400
1996	2,842,111	651	36.8	54,860	18,980	73,840
1997	2,981,280	653	37.0	55,480	19,645	75,124
1998	3,319,300	659	37.3	52,230	20,565	72,795
1999	3,606,932	665	37.6	50,285	21,060	71,343
2000	3,491,394	673	37.8	51,130	21,185	72,314
2001	3,370,562	685	38.0	47,590	20,745	68,334
2002	3,004,318	699	39.0	43,330	18,200	61,529

¹ This table gives a historical summary of selected statistics from Tables B-1 and D.

² “Days lost” are as paid in the period on current- and prior-year claims.

³ These statistics are based on short-term disability, long-term disability, and fatal claims first paid in the year. Health-care-only claims are not included.

⁴ The gender counts are rounded and, therefore, may not add up to the total.

Injury Rates and Claim Durations for Rateable Subsectors, 1998–2002

Table B-2

Subsector	Description	Injury Rate (Number of Claims ¹ per 100 Person-years ² of Employment)					Total Claim Duration ^{3,4} (Days per Claim)				
		1998 ⁵	1999 ⁵	2000 ⁵	2001	2002	1998	1999	2000	2001	2002
7010	Agriculture	4	4	4	4	5	61	63	54	57	63
7020	Fishing ⁶						63	70	61	57	58
7030	Forestry	12	9	9	8	9	59	63	70	69	70
7040	Oil and Gas or Mineral Resources	4	3	3	5	5	74	80	78	75	71
7110	Food and Beverage Products	12	12	11	10	10	39	42	43	38	39
7120	Metal and Non-metallic Mineral Products	11	10	10	8	7	32	38	36	35	35
7130	Petroleum, Coal, Rubber, Plastic, and Chemical Products	5	5	5	5	4	35	36	38	36	35
7140	Wood and Paper Products	6	6	5	5	5	51	54	53	50	53
7150	Other Products	4	4	4	3	3	35	36	34	35	38
7210	General Construction	8	8	7	8	7	53	57	58	56	56
7220	Heavy Construction	11	9	14	17	6	85	87	77	77	65
7230	Road Construction and Maintenance	5	5	5	5	4	69	71	76	69	69
7310	Warehousing	15	15	15	15	11	37	40	38	42	38
7320	Transportation and Related	10	9	9	9	8	53	58	59	58	56
7410	Retail	3	3	3	3	3	41	45	44	41	40
7420	Wholesale	3	3	3	2	2	33	36	31	35	35
7530	Public Administration	6	6	6	6	6	32	33	36	32	33
7610	Accommodation, Food, and Leisure Services	3	3	3	2	2	35	37	37	36	35
7620	Business Services ⁷	0	0	0	0	0	48	56	51	44	44

Subsector	Description	Injury Rate (Number of Claims ¹ per 100 Person-years ² of Employment)					Total Claim Duration ^{3,4} (Days per Claim)				
		1998 ⁵	1999 ⁵	2000 ⁵	2001	2002	1998	1999	2000	2001	2002
7630	Professional, Scientific, and Technical Services	1	1	1	1	1	39	49	40	45	48
7640	Other Services	5	5	5	4	4	39	46	44	43	43
7650	Education	2	2	2	2	2	35	39	38	38	35
7660	Health Care and Social Assistance	6	6	5	5	4	55	63	61	56	53
7670	Utilities	1	1	1	1	1	37	44	50	41	52
All Subsectors⁸		4.2	4.0	3.9	3.6	3.2	47	52	51	51	49

¹ The “number of claims” are those that received short-term disability, long-term disability, or survivor benefits either in the year of injury or in the first quarter of the following year.

² One person-year is the equivalent of 52 paid weeks of employment, whether worked by one individual or several. Subsector estimates of person-years are based on gross payrolls submitted by employers and on matching wage-rate data. In the past, the wage rate data was based on Statistics Canada information published on the 1980 SIC basis. The wage rate data is now partly based on Statistics Canada information published on the NAICS basis, and partly on the wage rates of STD claimants. The person-years estimates, and the resulting injury rates, are therefore revised from those that appeared in last year's version of this table.

³ Total claim duration is a measure of the total days lost per claim on disability claims, including days lost in years beyond the year of injury. It is calculated according to a convention established by the AWCBC. A number of different methods can be used to calculate duration, therefore comparisons of duration statistics from different sources should be made carefully.

⁴ Days lost for subsectors where compensation is frequently paid on a “calendar day” basis, have been adjusted so that they are on the same “work day” basis as the other subsectors.

⁵ Revised figures.

⁶ Because of the difficulty in calculating estimates of person-years for subsector 7020 (most subsector 7020 employers don't report gross payrolls in the same way as employers in other rated subsectors do), no injury rates are calculated for subsector 7020.

⁷ Injury rates of less than 0.5 are shown as 0.

⁸ The AWCBC basis for the overall injury rate has changed. It was formerly “rated and self-insured employers”; it is now “rated employers only.” Therefore, some of the overall injury rates for years 1998–2001 are slightly different from those that appeared in last year's version of this table.

An Analysis by Year of Injury of the Total Days Lost During 2002 and the Number of Short-term Disability¹, Long-term Disability², and Fatal Claims First Paid in 2002

Table C

Year of Injury	Number of Short-term Disability ¹ , Long-term Disability ² , and Fatal Claims First Paid in 2002	Total Days Lost in 2002 from all Claims ³
1952	-	50
1955	-	260
1957	-	260
1958	-	1
1960	-	190
1962	-	586
1963	-	148
1964	-	479
1965	-	165
1966	-	847
1967	-	131
1968	-	829
1969	-	501
1970	-	1,385
1971	-	1,597
1972	-	1,075
1973	-	1,224
1974	2	1,564
1975	2	1,993
1976	1	2,900
1977	2	1,811
1978	1	2,193
1979	3	3,247
1980	4	4,627
1981	3	2,920
1982	0	2,472
1983	2	267
1984	1	3,348

Year of Injury	Number of Short-term Disability ¹ , Long-term Disability ² , and Fatal Claims First Paid in 2002	Total Days Lost in 2002 from all Claims ³
1985	7	3,025
1986	8	2,515
1987	2	4,711
1988	8	4,616
1989	3	4,357
1990	13	5,718
1991	5	6,473
1992	10	18,772
1993	11	18,766
1994	15	22,401
1995	22	29,434
1996	39	46,128
1997	61	64,673
1998	124	102,403
1999	339	152,441
2000	521	239,226
2001	4,752	784,313
2002	55,568	1,457,276
TOTAL	61,529	3,004,318

¹ *Short-term disability claims* is the term for what were described as *wage-loss claims* in earlier versions of this table.

² *Long-term disability claims* is the term for what were described as *permanent disability claims* in earlier versions of this table.

³ These figures are work days compensated in 2002 on all claims, not just claims first paid in 2002.

An Analysis by Sector¹ of Industry, Gender, and Age Group of the Short-term Disability², Long-term Disability³, and Fatal Claims First Paid in 2002

Table D

Age Group ⁴	Number of STD, LTD, and Fatal Claims First Paid									Total No. of Claims	Gender ⁴		
	Sector								Deposit		Other ⁵	Male	Female
	70	71	72	73	74	75	76						
19 and Under	75	390	185	75	570	20	770	10	0	2,095	1,500	595	
20–24	370	1,490	725	430	1,330	100	2,005	85	0	6,535	4,915	1,620	
25–29	405	1,410	725	590	990	160	2,185	175	0	6,640	5,000	1,640	
30–34	390	1,540	855	745	970	310	2,425	340	0	7,575	5,640	1,935	
35–39	415	1,785	1,015	860	1,020	395	2,845	455	0	8,790	6,240	2,550	
40–44	450	1,845	1,000	840	1,035	455	3,315	530	5	9,475	6,480	2,995	
45–49	375	1,435	710	755	795	375	2,990	500	0	7,935	5,195	2,740	
50–54	280	1,035	465	565	555	270	2,495	385	0	6,050	3,910	2,140	
55–59	195	625	275	440	340	160	1,700	215	0	3,950	2,545	1,405	
60–69	140	400	255	315	180	45	835	70	5	2,245	1,675	570	
Over 69	40	60	45	30	10	5	50	0	0	240	230	10	
TOTAL	3,135	12,012	6,257	5,644	7,795	2,293	21,616	2,763	14	61,529	43,330	18,200	
AVERAGE AGE	39	38	38	41	35	41	40	42		39	38	40	

¹ For a complete description of the sector numbers, see “Classes of Industry” on page 53.

² *Short-term disability claims* is the term for what were called *temporary total claims* in earlier versions of this table.

³ *Long-term disability claims* is the term for what were called *permanent disability claims* in earlier versions of this table.

⁴ Claims uncoded to age and gender have been proportionately allocated, and the counts rounded to the nearest five. Therefore, columns and rows may not add up to the totals shown.

⁵ Includes claims not yet coded to a subsector and claims charged to Section 39 of the *Workers Compensation Act*.

**An Analysis by Injury of the Short-term Disability,
Long-term Disability, and Fatal Claims First Paid, 1998–2002**

Table E

Injury	Number of STD, LTD, and Fatal Claims First Paid ¹						Days Lost ² , 1998–2002	Short-term Disability, Long-term Disability, and Survivor Benefits ³ , (Excludes Rehab and Health Care Costs), 1998–2002
	1998	1999	2000	2001	2002	1998–2002		
Abrasion	1,870	1,670	1,710	1,540	1,320	8,110	51,900	\$11,088,000
Amputation	280	320	330	280	330	1,540	204,500	\$66,170,000
Burn	1,420	1,300	1,360	1,270	1,130	6,480	84,700	\$16,800,000
Concussion	680	770	920	760	790	3,920	288,200	\$92,269,000
Contusion	8,420	7,140	7,760	7,230	6,460	37,010	1,003,900	\$267,738,000
Cut	8,340	7,670	7,650	7,360	6,980	38,000	719,000	\$138,142,000
Dislocation	410	460	470	380	380	2,100	175,300	\$31,222,000
Electric Shock, Electrocutation	70	70	90	80	70	380	20,700	\$13,667,000
Fracture	4,040	4,180	4,120	3,750	3,770	19,860	2,327,900	\$566,298,000
Hernia	420	480	430	440	430	2,200	116,800	\$13,201,000
Back Strain	18,730	17,800	18,250	17,430	15,180	87,390	3,914,700	\$684,862,000
Other Strain	20,630	21,120	21,330	20,860	18,630	102,570	5,446,000	\$851,376,000
Traumatic Tenosynovitis, Bursitis, and Related ⁴	1,930	2,300	2,330	1,810	1,510	9,880	750,300	\$121,237,000
Multiple Injuries	50	50	70	40	40	250	27,600	\$78,979,000
Other Injuries	110	100	100	100	50	460	24,600	\$43,289,000
Occupational Disease ⁴	5,400	5,910	5,390	5,000	4,460	26,160	1,636,900	\$377,270,000
TOTAL⁵	72,795	71,343	72,314	68,334	61,529	346,315	16,793,046	\$3,373,608,225

¹ Number of short-term disability, long-term disability, and fatal claims accepted in the year. Some of the figures for years prior to 2002 have been revised.

² “Days lost” are as paid in the period on current- and prior-year claims.

³ Includes short-term disability, long-term disability, and survivor benefits charged in the period on current- and prior-year claims. Includes the increase in widows’ pension entitlement arising from Bill 63 and the 1997 B.C. Supreme Court decision.

⁴ In this table, traumatic tenosynovitis, bursitis, and related conditions are shown as injuries. In earlier versions of this table, these were included in the “Occupational Disease” category.

⁵ The claim counts, days lost, and claim costs by injury category have been adjusted for the effect of uncoded claims and appear as rounded numbers. The columns, therefore, do not necessarily add up to the column totals shown.

**Back Strain Claims (Excluding Health-care-only Claims)
Paid for the First Time During 1993–2002**

Table F

Year	Number of Back Strain Claims ¹ First Paid in the Year	Total Number of Claims ¹ First Paid in the Year	Back Strain Claims ¹ as a % of Total Claims ¹	Days Lost ² in the Year on Back Strain Claims	Days Lost ² in the Year on All Claims	Days Lost ² on Back Strain Claims as a % of All Days Lost ²
1993	19,540	79,503	24.6%	832,700	3,271,064	25.5%
1994	20,900	81,488	25.6%	923,000	3,430,119	26.9%
1995	19,760	78,400	25.2%	806,800	3,211,740	25.1%
1996	18,450	73,840	25.0%	693,500	2,842,111	24.4%
1997	18,780	75,124	25.0%	721,900	2,981,280	24.2%
1998	18,730	72,795	25.7%	811,400	3,319,300	24.4%
1999	17,800	71,343	24.9%	839,000	3,606,932	23.3%
2000	18,250	72,314	25.2%	796,200	3,491,934	22.8%
2001	17,430	68,334	25.5%	793,600	3,370,562	23.5%
2002	15,180 est ³	61,529	24.7%	673,900 est ³	3,004,318	22.4%
1993–2002	184,820	734,670	25.2%	7,892,000	32,529,360	24.3%

¹ Excluding health-care-only claims. (*Health-care-only claims* is the term for what were called *medical-aid-only claims* in earlier versions of this table.)

² “Days lost” are as paid in the year on current- and prior-year claims.

³ Claims uncoded at year-end have been proportionately allocated to the back strain category. This figure is an estimate.

Assessment Statistics

Classes of Industry

Effective January 1, 2000, all industries within the scope of the *Workers Compensation Act* are divided into 11 classes. For administrative purposes, these classes are represented as sectors within the Board's classification structure, as follows:

Class 1: Primary Resources	Sector 70	Primary Resources
Class 2: Manufacturing	Sector 71	Manufacturing
Class 3: Construction	Sector 72	Construction
Class 4: Transportation and Warehousing	Sector 73	Transportation and Warehousing
Class 5: Trade	Sector 74	Trade
Class 6: Public Services	Sector 75	Public Sector
Class 7: General Services	Sector 76	Service Sector
Class 8: Canadian Airlines International Ltd., Canadian Pacific Hotels Corporation, Canadian Pacific Railway Company, Cominco Ltd.	Sector 81	Deposit Sector 8 (formerly Class 10)
Class 9: The Burlington Northern and Santa Fe Railway Company	Sector 82	Deposit Sector 9 (formerly Class 18)
Class 10: Air Canada, Canadian National Railway Company, Via Rail Canada Inc.	Sector 83	Deposit Sector 10 (formerly Class 12)
Class 11: British Columbia Assessment Authority, British Columbia Buildings Corporation, British Columbia Ferry Corporation, British Columbia Railway Company, Emergency Health Services Commission, Government of British Columbia, Workers' Compensation Board of British Columbia	Sector 84	Deposit Sector 11 (formerly Class 13)

Following is a detailed listing of the various industries to which the *Workers Compensation Act* applies:

SECTOR 70 PRIMARY RESOURCES

Subsector 7010

Agriculture

Apiary
Artificial Insemination or Animal Breeding
Berry Farming
Composting
Dairy Farming
Egg Farming
Exotic Poultry Farming
Farm Labour Supply or Farm Services
Feed Lot or Stockyard
Fur Bearing Animal Farming
Grain Farming
Greenhouse
Hay or Seed Farming
Hog Farming
Hunting or Trapping
Orchard
Ornamental Nursery
Poultry Catching
Poultry Farming
Poultry Hatchery
Ranch
Riding Academy or Boarding or Breeding or Raising
 Horses (*formerly Riding Academy or Boarding or Raising Horses*)
Sod or Turf Nursery
Vegetable Farming
Vineyard
White Mushroom Farming
Wild Plant Harvesting

Subsector 7020

Fishing

Dive Fishing
Fin Fish Farming
Fish Hatchery
Fish Packing and Hand Picking
Fishing (*expired December 31, 2001*)
Gillnet and Troll Fishing
Longline and Trap Fishing
Seine Fishing
Shell Fish Farming
Trawl Fishing

Subsector 7030

Forestry

Brushing and Weeding or Tree Thinning or Spacing
 (not elsewhere specified)
Cable or Hi-Lead Logging
Chemical Brushing and Weeding or Chemical Tree
 Thinning or Spacing
Dry Land Sort
Forest Fire Fighting
Ground Skidding, Horse Logging, or Log Loading
Integrated Forest Management
 (*formerly Integrated Logging*)
Log Booming
Log Processing
Logging Road Construction or Maintenance
Manual Tree Falling and Bucking
Mechanized Tree Falling
Shake Block Cutting
Tree Planting or Cone Picking

Subsector 7040

Oil and Gas or Mineral Resources

Clay, Peat, Soil, or Topsoil Digging or Processing
Diamond Drilling, Seismic Drilling, or Shot Hole Drilling
Geological, Geophysical, or Geochemical Field Work
Oil and Gas or Mineral Exploration, or Prospecting

Oil or Gas Drilling
 Oil or Gas Field Servicing (by means other than service rigs)
 Oil or Gas Well Servicing (by means of service rigs)
 Open Pit Coal Mining
 Open Pit Metal or Mineral Mining
 Placer Mining
 Quarry
 Seismic Exploration
 Stone Crushing
 Underground Coal Mining
 Underground Metal or Mineral Mining

SECTOR 71 MANUFACTURING

Subsector 7110 Food and Beverage Products

Abattoir
 Alcoholic Beverage Manufacture
 Animal Feed or Supplement Manufacture or Packaging
 Baked Goods Manufacture
 Butter, Cheese, or Ice Cream Manufacture
 Candy or Chocolate Manufacture
 Cereal, Biscuit, Taco or Rice Product, Pasta, or Other Dry Food Product Manufacture (not elsewhere specified)
 Coffee, Tea, Herb, or Spice Packaging or Manufacture
 Fish Canning
 Fish Processing or Fish Reduction
 Flour Mill or Rice Mill
 Food Product Manufacture (not elsewhere specified)
 Fruit or Vegetable Canning, Bottling, or Processing or Fruit or Vegetable Product Manufacture
 Ice Manufacture
 Liquid Dairy Product Manufacture
 Meat Canning or Canned Meat Product Manufacture
 Meat Cutting, Packing, or Processing

Non-Alcoholic Beverage Manufacture or Water Bottling
 Poultry Processing
 Sausage or Sausage Casing Manufacture
 Smoked, Cured or Prepared Meat Product Manufacture (not elsewhere specified)
 Sugar Refining and Packaging

Subsector 7120 Metal and Non-Metallic Mineral Products

Aircraft, Automobile, or Truck Assembly
 Auto Spring or Chain Manufacture
 Boiler, Tank, or Furnace Manufacture
 Cement Manufacture
 Ceramic or Terra Cotta Tile, Clay Brick, or other Ceramic or Clay Product Manufacture (not elsewhere specified)
 Commercial Marine Vessel Manufacture, Service or Repair
 Concrete Product Manufacture
 Control Panel Manufacture, Installation, Service, or Repair
 Die Casting
 Dry Dock or Marine Railway
 Electrical Switchgear or Transformer Manufacture, Installation, Service, or Repair
 Elevator or Escalator Manufacture, Installation, Service, or Repair
 Engine or Cylinder Manufacture or Rebuilding or Automobile Part Manufacture
 Fishing Tackle Manufacture
 Foundry
 Fuel Cell Manufacture
 Galvanizing, Electroplating, or Protection Plating
 Gypsum Product Manufacture
 Heavy Equipment, Machinery, or Parts Manufacture or Installation (greater than 500 lbs weight)
 Industrial Saw Blade Manufacture, Sharpening, Service, or Repair
 Light Industrial Equipment, Machinery, or Power Tool Manufacture (less than 500 lbs weight)

Lime Kiln or Lime Manufacture
 Machine Shop
 Metal Bed, Furniture, or Ladder Manufacture
 Metal Can or Tinware Product Manufacture
 Metal Door, Screen Door, or Aluminum Window
 Manufacture
 Metal Fastener Manufacture
 Metal Pipe or Fitting Manufacture
 Metal Product Manufacture (not elsewhere specified)
 Metal Railing or Gate Manufacture
 Metal Recycling
 Powder Coating or Metal Enamelling
 Precision Instrument Manufacture
 Ready Mix Concrete Manufacture and Delivery
 Sheet Metal Fabrication
 Smelter
 Soil, Topsoil, Peat, or Other Similar Gardening Material
 Packaging
 Stone or Marble Cutting, Dressing, Shaping, or
 Lettering, or Stone or Marble Product Manufacture
 Structural Concrete Product Manufacture
 Structural Metal Product Fabrication
 Tool and Die Making
 Truck Body or Trailer Manufacture
 Wire, Cable, or Other Wire Product Manufacture
 (not elsewhere specified)
 Wood Mill Saw Manufacture

**Subsector 7130 Petroleum, Coal, Rubber, Plastic,
and Chemical Products**

Acid, Base, Salt, Chemical, or Dye Manufacture
 (not elsewhere specified)
 Asphalt or Tar Roofing Product Manufacture
 Battery Manufacture
 Candle, Polish, or Other Wax Product Manufacture
 Chemical Pesticide or Herbicide Manufacture

Compressed or Liquefied Gas Manufacture
 Cosmetic Product or Beauty Aid Manufacture
 Drug, Vitamin, or Pharmaceutical Manufacture
 Explosives, Fireworks, or Munitions Manufacture
 Fertilizer Manufacture
 Fibreglass Insulation Manufacture
 Fibreglass or Cultured Marble Product or Acrylic
 Household Fixture Manufacture
 Foam Product Manufacture
 Glue or Adhesive Manufacture
 Industrial Rubber Belt Manufacture, Installation, Service,
 or Repair
 Ink Manufacture
 Oil or Gas Production
 Oil Refining, Oil Recycling, or Operation of Fuel
 Storage Tanks
 Paint, Putty, Stain, Sealant, Wood Filler, Varnish, or
 Waterproofing Agent Manufacture
 Petrochemical Manufacture
 Plastic Colour Concentrate Manufacture
 Plastic Film Extrusion and Flexible Packaging Manufacture
 Plastic or Rubber Recycling
 Plastic Product Manufacture (by blow moulding)
 Plastic Product Manufacture (by profile extrusion)
 Plastic Product Manufacture (by rotational moulding or
 liquid moulding)
 Plastic Product Manufacture (by thermoforming,
 injection moulding, or other moulding processes
 (not elsewhere specified))
 Post Extrusion Fabrication of Plastic Products
 Rubber Mat, Mattress, or Life Raft Manufacture
 Small Rubber or Plastic Product Manufacture
 Soap, Bleach, or Cleaning Compound Manufacture
 Synthetic Resin Compound Manufacture
 Tire Retreading or Recapping

Subsector 7140 Wood and Paper Products

Cardboard or Paper Container Manufacture
Chemical Pulp and Paper Mill
Coffin or Casket Manufacture
Custom Wood Kiln
Envelope Manufacture
Flush Door Manufacture
Furniture Refinishing or Restoration
Laminated Wood Structural Support Product Manufacture
Mechanical Pulp and Paper Mill
Oriented Strand Board Manufacture
Paper Product Manufacture (not elsewhere specified)
Paper Recycling or Cellulose Insulation Manufacture
Planing Mill
Portable Wood Mill
Pre-Hung Door Assembly
Prefabricated Log Home Kit Manufacture
Pressed Board Manufacture (not elsewhere specified)
Printing
Sawmill
Shake or Shingle Mill
Stationery Manufacture
Stile and Rail Door Manufacture
Upholstering
Veneer or Plywood Manufacture
Wood Chip Mill
Wood Preserving
Wood Window Manufacture
Wooden Box, Crate, Pallet, or Lath Manufacture
Wooden Component Manufacture
(not elsewhere specified)
Wooden Fence or Gate Manufacture
Wooden Furniture Manufacture
Wooden Moulding Manufacture
Wooden Musical Instrument Manufacture
Wooden Post or Pole Manufacture

Wooden Product Manufacture (not elsewhere specified)
Wooden Toy Manufacture
Wooden Truss Manufacture
Woodworking or Carpentry Shop

Subsector 7150 Other Products (not elsewhere specified)

Art, Craft, or Ornament Manufacture
Awning or Awning Sign Manufacture
Blind or Drapery Track Manufacture
Brush, Broom, or Mop Manufacture
Canvas or Nylon Product Manufacture
(not elsewhere specified)
Carpet or Rug Manufacture
Clock or Watch Manufacture
Clothing, Clothing Accessory, or Other Cloth Product
Manufacture (not elsewhere specified)
Commercial Sign Manufacture
Cord, Rope, or Net Manufacture
Cushion or Stuffed Toy Manufacture
Custom Tailoring
Drapery Manufacture
Electric or Electronic Product or Component
Manufacture (not elsewhere specified)
Eyewear Manufacture
Fabric Manufacture
Footwear Manufacture
Fur Product Manufacture
Gasket or Filter Manufacture
Glass Recycling or Glass Brick, Bottle, or Other
Container Manufacture
Glass Shop, Window Installation, or Window Glass
Repair or Replacement
Illuminated or Electronic Sign Manufacture
Jewellery or Trophy Manufacture
Leather Product Manufacture
Lighting Fixture Manufacture

Luggage Manufacture or Repair
 Marine Pleasure Craft Manufacture
 Mattress Manufacture
 Modular or Prefabricated Building Manufacture
 (not elsewhere specified)
 Orthotics or Prosthetics Manufacture, Sales, Service,
 or Repair
 Shoe Repair Shop or Leather Goods Repair
 Tannery
 Taxidermy
 Vinyl Window Manufacture

Finishing Carpentry
 Fire and Flood Restoration
 Floor Covering Installation (not elsewhere specified)
 Framing or Residential Forming
 Hardwood Floor Laying or Refinishing
 House or Other Wood Frame Construction or
 Renovation Work
 Industrial, Commercial, Institutional, or Highrise
 Residential Construction
 Insulation Work or Fireproofing
 Interior Decorating
 Land Clearing, Excavation, or Site Development
 Lathing
 Log Home Construction
 Low Slope Roofing
 Masonry
 Mechanical Insulation
 Oil or Gas Pipeline Construction or Repair
 Overhead Door Installation
 Painting or Wallpapering
 Plastering or Stucco Work
 Plumbing, Heating, Vent, Residential Air Conditioning, or
 Central Vacuum System Installation or Repair
 Pool, Spa, or Hot Tub Installation or Structural Repair
 Power Pole, Powerline, or Transmission Line Installation,
 Service, or Repair *(formerly Power Pole, Street Light,
 Powerline, or Transmission Line Installation, Service,
 or Repair)*
 Prefabricated Steel Building Construction
 Scaffolding, Tent, Staging, or Display Booth Rental
 and Installation
 Siding, Awning, or Gutter Installation, Service, or Repair
(formerly Siding, Awning, or Gutter Installation)
 Sign Installation, Service, or Repair
 Steep Slope Roofing

SECTOR 72 CONSTRUCTION

Subsector 7210 General Construction

Asbestos Abatement
 Blasting or Avalanche Control
 Building Demolition
 Cellular, Microwave, Radar, or Transmission Tower
 Erection, Installation, Service, or Repair
 Commercial Refrigeration or Commercial Air
 Conditioning Work
 Commercial Tank or Boiler Installation or Removal
 Concrete Cutting or Coring
 Concrete Placing, Finishing, Surfacing, or Repair
 Concrete Pumping
 Concrete Reinforcing
 Construction Labour Supply or General Labour Supply
 (not elsewhere specified)
 Crane Operation
 Deck, Railing, or Fence Installation
 Decking Application or Waterproofing
 Dredging
 Drywalling or Acoustic Board Installation
 Electrical Work

Structural Concrete Forming
Tile Work or Terrazzo Laying
Water Well, Foundational, or Directional Drilling
Welding Services or Ornamental Metal Installation

Subsector 7220 Heavy Construction

Bridge, Overpass, or Viaduct Construction or Repair
House Raising or Structural Moving of Buildings or Heavy Equipment
Pier, Wharf, or Dry Dock Construction or Repair
Pile Driving
Steel Frame Erection or Structural Repair of Steel Frames
Steel Frame Painting, Bridge Painting, or Bridge Cleaning
Structural Concrete Reservoir, Flume, Dam, Dyke, Causeway, or Jetty Construction or Repair
Tunnelling

Subsector 7230 Road Construction or Maintenance

Earth and Rock Filled Structure Construction
Highway Maintenance (routine maintenance of all aspects of a specific section of highway)
Highway, Road, or Parking Lot Painting
Paving Services or Asphalt Manufacture
Railway Construction, Maintenance, or Demolition
Road Construction or Maintenance (not elsewhere specified)
Snow or Ice Removal
Street Cleaning
Traffic Control

SECTOR 73 TRANSPORTATION AND WAREHOUSING

Subsector 7310 Warehousing

Cold Storage Plant
Grain Elevator Operation
Recycling Depot
Warehouse Operation

Subsector 7320 Transportation and Related Services

Aircraft Fueling
Aircraft Handling
Airport
Armoured Car Service
Auto Towing
Aviation or Flying School
Barge, Tug, or Other Water Transport of Goods (not elsewhere specified)
Bus Line or Chartered Bus Tours
Courier Services
Distribution Centre
Dump Truck Operation
Ferry Service
Fixed Wing Aerial Work or Other Specialty Air Operations (not elsewhere specified)
Fixed Wing Instrument Flight Rule Operation
Fixed Wing Visual Flight Rule Operation
Garbage, Debris, Industrial Waste, or Recyclable Material Removal
General Trucking (not elsewhere specified) or Domestic Freight Forwarding
General Wharf Operations
Harbour Commission or Port Authority
Helicopter Aerial Work (not elsewhere specified)
Helicopter Instrument Flight Rule Operation
Helicopter Logging
Helicopter Visual Flight Rule Operation
Limousine, Chauffeur, or Handydart Services
Loading or Unloading Goods (not elsewhere specified)
Log Hauling
Log Towing
Marine Bulk Terminal
Marine Container Terminal
Marine Piloting

Mobile Home or Boat Towing
 Moving and Storage
 Newspaper, Magazine, or Flyer Distribution or Contract
 Mail Delivery
 Pilot Car or Auto Delivery Services
 Railway
 Ship Docking
 Stevedoring
 Taxi Service
 Water Taxi or Crew Transport

SECTOR 74 TRADE

Subsector 7410 Retail

Aircraft and Aircraft Equipment Sales and Leasing
 Auctioning Services
 Auto Sales (no service)
 Bicycle Shop or Sports Equipment Rental
 Butcher Shop
 Car or Truck Rental
 Department Store
 Eyewear Sales or Repair
 Firewood Yard
 Garden or Landscaping Supply
 Gas Bar
 General Retail (not elsewhere specified)
 Home Improvement Centre
 Jewellery, Clock, Watch, or Trophy Sales and Repair or
 Key Cutting
 Light Industrial Equipment, Machinery, or Power Tool
 Rental (less than 500 lbs weight)
 Mobile Home Sales or Installation
 Music Shop
 Party Supply
 Retail Art Gallery and Picture Framing

Retail Bakery or Delicatessen
 Retail Brewing or Wine Making Shop
 Retail Confectionery
 Satellite TV Dish Sales, Service, or Installation
 Supermarket

Subsector 7420 Wholesale

Chemical Wholesale
 Clothing, Linen, or Other Textile Wholesale
 Drug, Vitamin, Pharmaceutical, or Beauty Aid Wholesale
 Electrical, Plumbing or Heating Supplies, or Packaged
 Building Supplies, Hardware, or Other Metal
 Product Wholesale
 Electronic Equipment or Light Equipment, Machinery, or
 Parts Wholesale (less than 500 lbs weight)
 Film Distribution
 Fish Wholesale
 Food, Beverage, or Tobacco Product Wholesale
 Hay, Seed, Dry Animal Feed, or Other Similar Farm
 Product Wholesale
 Log Wholesale Trading
 Lumber, Plywood, Gyproc, Brick, or Other Similar
 Building Material Wholesale
 Medical or Dental Supplies Wholesale
 Packaged Petroleum Product Wholesale
 Steel or Metal Wholesale (primary form)
 Wholesale (not elsewhere specified)

SECTOR 75 PUBLIC SECTOR

Subsector 7530 Public Administration

EI Job Creation
 Indian Band and Related Operations
 Law Enforcement
 Local Government and Related Operations

SECTOR 76 SERVICE SECTOR

Subsector 7610 Accommodation, Food, and Leisure Services

Airline Catering (*new CU Effective January 1, 2002*)

Amusement Facility (not elsewhere specified)

Arcade

Auto Race Course

Bed and Breakfast

Billiard or Pool Hall

Bingo, Casino, or Other Gaming Operations

Bowling Alley

Cabin, Cottage, Lodge, Resort, or Other Overnight

Rental Accommodation (not elsewhere specified)

Campground

Catering Services (not elsewhere specified)

Chartered Boat Tours

Circus, Carnival, Rodeo, or Mechanical Amusement Ride

Coffee Shops, Ice Cream Parlours, or Other Food

Concessions (not elsewhere specified)

Fitness Centre, Gym, or Health Centre

Golf Course, Driving Range, Pitch and Putt, or Lawn

Bowling Facility

Guided Tour (not elsewhere specified)

Hair Styling Establishment or Esthetic Services

Hall Rental

Horse Race Course

Hotel

Industrial Catering

Live Performance Production House

Live Performance Road House

Marina or Boat Rental

Massage Parlour, Steam Bath, or Escort Services

Mini Storage

Mobile Catering

Motel

Movie Theatre or Drive-In Theatre

Organizing a Leisure, Social, or Sport Club

Organizing or Conducting Special Events
(not elsewhere specified)

Organizing or Operating a Private Camp

Outdoor Sport Tour

Park, Campground or Trail Maintenance

Parking Lot or Valet Parking

Performing Arts

Private Park, Garden, or Zoo

Property Management, Building Rental, or Mobile Home
Parks and Strata Corporations

Pub, Bar, Night Club, or Lounge

Public Art Gallery, Museum, or Other Special Interest
Building Operation or Related Services

Restaurant or Other Dining Establishment

Rooming House or Hostel

Ski Hill or Gondola Ride

Sport Facility

Sports Administration

Sports Instruction School

Tanning Salon

Travel Agency or Accommodation Registry

Subsector 7620 Business Services

Accounting or Bookkeeping

Actuarial Services

Administration of an Operation Conducted Outside B.C.

Advertising or Public Relations Services

Broker (not elsewhere specified) or Wholesale
(with no stock of goods in B.C.)

Business Consulting

Call Centre

Chamber of Commerce

Cheque Cashing

Clerical Worker Supply

Commercial Stock Audit
 Constituency Office, Consulate, Foreign Embassy, or
 MLA Office
 Custom Brokerage or International Freight Forwarding
 (excluding handling of goods)
 Custom Brokerage or International Freight Forwarding
 (including handling of goods)
 Data Processing
 Digital Printing
 Employers' Association, Marketing Board, or Better
 Business Bureau
 Employment Agency or Aptitude Testing
 Environmental Conservation Services
 Financial or Lending Institution
 Franchisor Services
 Graphic Design
 Insurance or Bonding Services
 Law Office, Notary Public, Labour Relations, or
 Supplementary Legal Services
 Marine Cargo Inspection
 Marine Ship Agency and Related Services
 Market Research
 Modeling, Booking, or Talent Agency
 Mortgage Brokerage
 Packaged Office Service
 Private Investigation, Process Serving, Collection, or
 Bailiff Services
 Product Demonstration
 Professional Association
 Property Management (administration only)
 Publishing (with printing)
 Real Estate Agency
 Real Estate Appraisal or Appraisal Services
 (not elsewhere specified)
 Records Storage

Research Services (not elsewhere specified)
 Security or Stock Brokerage, Financial Planning, or
 Investment Services
 Ship Chandlery or Ship Husbandry
 Telemarketing
 Telephone Answering Service
 Translating or Interpreting Services
 Union
 Venture Capital Investment
 Writing, Publishing, or Map Production (no printing)

Subsector 7630

Professional, Scientific, and Technical Services

Air Navigation Support
 Animal Humane Society or Wildlife Rehabilitation
 Animal Training
 Architectural Drafting or Design
 Building or Home Inspection
 Computer Consulting or Custom Computer Programming
 Computer Software Package Design and Production
 Computer Software, Audio, or Video Duplicating or
 Document Scanning Services
 Construction Management Consulting
 Consulting (not elsewhere specified)
 Consulting Engineering
 Dental Laboratory
 Domestic Animal Breeding or Boarding (*formerly Kennel*)
 Electrical Corrosion Control
 Farrier Services
 Forest Management Consulting
 Geological, Geophysical, or Geochemical Consulting
 or Analysis
 Industrial Testing
 Interior Design Consulting
 Land Surveying
 Log Scaling
 Marine Vessel Surveying

Medical Diagnostic Laboratory
Motion Picture, Commercial, or Television Post Production
Motion Picture, Commercial, or Television Production
Pet Grooming
Photo Film Processing or Microfilming
Photography Studio or Photographic Services
Pipeline or Heavy Equipment Inspection
Recording Studio
Scientific Research Laboratory
Television or Radio Broadcasting
Veterinary Hospital or Veterinary Services

Subsector 7640 Other Services (not elsewhere specified)

Aircraft Maintenance or Repair
Armature Winding for Small Motors
Auto Dealership (sales and service)
Auto Glass Shop
Auto Recycling
Auto Service or Repair
Autobody Shop
Automatic Door or Gate Installation, Service or Repair
Bindery
Blind or Drapery Cleaning
Blind or Drapery Track Installation
Car Wash or Auto Detailing
Carpet, Rug, or Upholstery Cleaning Using Portable
Equipment
Cemetery or Crematorium
Chimney Cleaning
Commercial Cleaning or Janitorial Services
Commercial Diving
Commercial Laundry or Linen, Uniforms, or Diaper Supply
Commercial Retail Sign Shop or Document
Copying Services
Creek or Stream Enhancement
Day Care Centre, Preschool, or Playschool

Domestic Cleaning
Dry Cleaning Facility or Laundromat
Farm Equipment or Parts Sales, Service, or Repair
(greater than 500 lbs weight)
Fire Prevention Equipment Sales, Service, Installation,
or Inspection
Fish Enhancement
Fruit or Vegetable Packing or Packaging
Funeral Undertaking
Furnace, Duct, or Air Vent Cleaning and Servicing
Heavy Equipment or Machinery Rental (excluding
scaffolding supply and installation)
Heavy Equipment, Machinery, or Parts Sales, Service,
or Repair (greater than 500 lbs weight)
(not elsewhere specified)
Hiring or Providing Domestic Childcare
Hiring Workers for Own Home Maintenance
Home Support Services (*formerly Homemaker Services*)
Knife, Scissor, Handsaw, or Hand Tool Sharpening
Land Pollution Control
Landscaping or Installation of Lawn Irrigation Systems
Lawn Maintenance, Garden Maintenance, or Weed Control
Light Industrial Equipment, Machinery or Parts, or Power
Tool Service or Repair (less than 500 lbs weight)
Locksmithing
Mailing or Addressing Services
Major Household Appliance or Stationary Business
Machines or Medical Equipment Service, Repair,
or Installation
Marine Pollution Control
Marine Salvage, Marine Log Salvage, or Marine
Garbage Collection
Ornamental Plant Rental or Office Plant Services
Paper Shredding
Plastic Laminating, Packing, or Packaging
(not elsewhere specified)

Pleasure Boat, Motorcycle, Snowmobile, or Other
 Leisure Craft Sales and Service
 Pool, Spa, or Hot Tub Service
 Portable Electronic Equipment or Small Household
 Appliance Service or Repair
 Recreational Vehicle Sales, Service, or Rental
 Security Alarm System Sales, Service, Installation, and
 Repair or Telecommunication, Cable TV, or Other
 Similar Wiring
 Security or Patrol Services
 Septic Tank, Sewer, or Sewage Disposal System Services
 Service Station
 Social Companion Services
 Steam Cleaning, Sandblasting, or Pressure Washing of
 Buildings, Pools, or Parking Lots
 Steam Cleaning, Sandblasting, or Pressure Washing of
 Heavy Equipment
 Structural Pest Control or Fumigation
 Structural Repair of Marine Pleasure Craft
 Tree Services (not directly related to the forestry industry)
 Vending Machine or Amusement Machine Distribution
 Washing Machine or Dryer Distribution (coin-operated)
 Window, Gutter, or Awning Cleaning

Subsector 7650 Education

College, Trade School, or Vocational School
 Driving School
 Independent or Private Primary or Secondary School
 Library or Resource Centre
 Non-Academic School (not elsewhere specified)
 Public School District
 Tutoring Service
 University

Subsector 7660 Health Care and Social Assistance

Acute Care
 Alcohol or Drug Treatment Centre
 Alternative Health Care
 Ambulance or First Aid Services
 Chiropractic Services, Chiropractic Care, or
 Chiropractic Practice
 Community Health Support Services
 Counselling or Social Services (not elsewhere specified)
 Dentistry or Ancillary Dental Services
 Fundraising or Charitable Organization
 Life and Job Skills Training
 Long Term Care
 Massage Therapy (licensed)
 Medical Clinic or Medical Practice (not elsewhere
 specified) (*formerly Private Medical Practice
 (not elsewhere specified)*)
 Optometry
 Physiotherapy or Occupational Therapy
 Religious Organization
 Residential Social Service Facility
 Retirement Home or Seniors' Home (accommodation only)
 Short Term Care
 Supplementary Health Care
 Surgical Centre

Subsector 7670 Utilities

Cable Television Service
 Electric Utilities
 Gas Utilities
 Internet Services
 Oil or Gas Transmission (oil or gas pipeline)
 Telephone or Telecommunication Services

SECTOR 81 DEPOSIT SECTOR 8 (formerly Class 10)

Subsector 8108 Deposit Sector 8 (formerly Class 10)

Building Construction
Canadian Airlines International Ltd.
Canadian Pacific Hotels Corporation
Canadian Pacific Railway Company
Cominco Ltd.
Express
Trucking and Hauling
Water Transportation

Dental Technicians' Board
Emergency Health Services Commission
Employment Bridging Assistance Programme
First Aid Ski Patrol
Government of British Columbia
Learners in Vocational Training School
Liquor Distribution Branch
Provincial Emergency Programme
Railwest Manufacturing Company
Workers' Compensation Board of British Columbia

SECTOR 82 DEPOSIT SECTOR 9 (formerly Class 18)

Subsector 8209 Deposit Sector 9 (formerly Class 18)

The Burlington Northern and Santa Fe Railway Company

SECTOR 83 DEPOSIT SECTOR 10 (formerly Class 12)

Subsector 8310 Deposit Sector 10 (formerly Class 12)

Air Canada
Canadian National Railway Company
Via Rail Canada Inc.

SECTOR 84 DEPOSIT SECTOR 11 (formerly Class 13)

Subsector 8411 Deposit Sector 11 (formerly Class 13)

British Columbia Assessment Authority
British Columbia Buildings Corporation
British Columbia Development Corporation
British Columbia Ferry Corporation
British Columbia Harbours Board
British Columbia Railway Company
British Columbia Systems Corporation
Canada — British Columbia Employment Development Programme

Assessment Statistics (Rateable Employers)

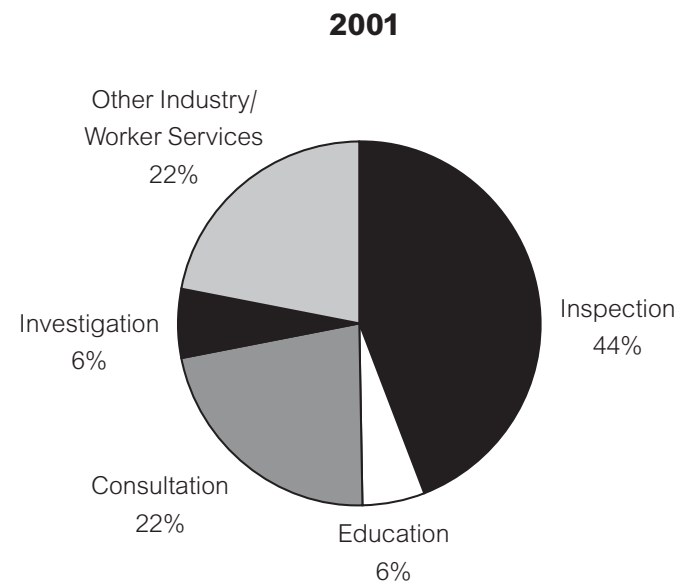
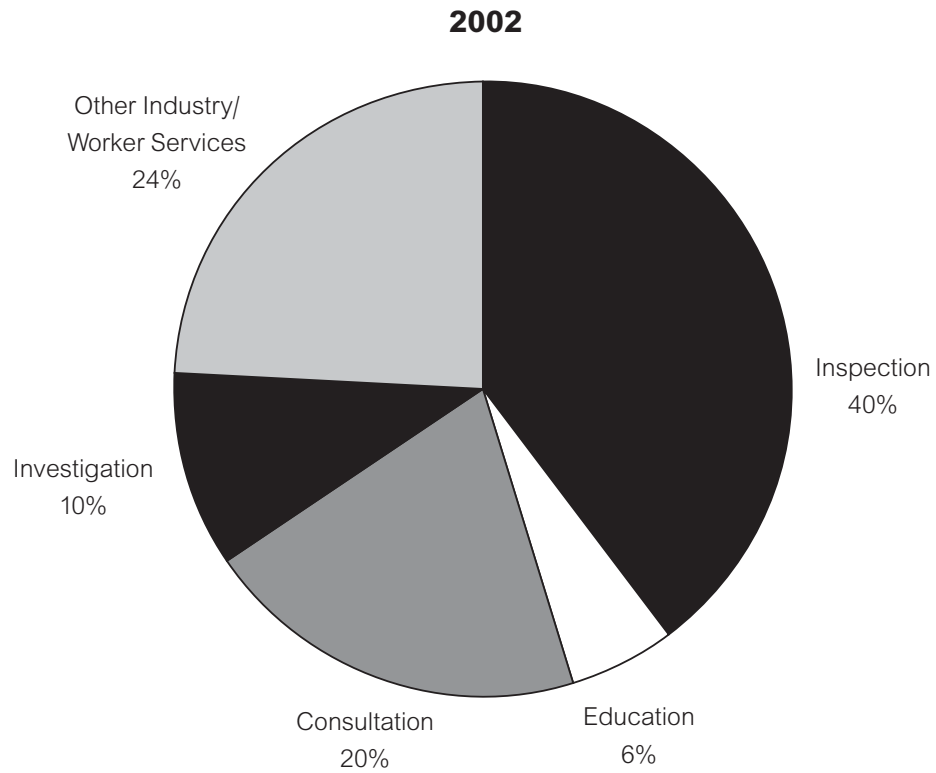
The following statistics are in respect of Rateable Employers only (i.e. excluding Self-Insured Employers and the Federal Government). Assessable payroll includes those portions of earnings up to the maximum wage rate — \$58,500 in 2001 and \$59,600 in 2002. Assessment statistics for the past eight years are as follows:

Year	Number of Employers at December 31	Assessable Payroll ¹	Premiums ¹	Maximum Wage Rate
1995	146,293	\$40,411,000,000	\$924,078,000	\$52,400
1996	152,316	\$41,948,000,000	\$961,774,000	\$54,200
1997	156,233	\$43,935,000,000	\$975,030,000	\$55,800
1998	161,770	\$45,045,000,000	\$907,047,000	\$56,900
1999	164,963	\$46,483,000,000	\$873,983,000	\$57,500
2000	166,501	\$48,761,000,000	\$842,012,000	\$58,000
2001	169,650	\$50,069,000,000	\$892,097,000	\$58,500
2002* (*estimated)	171,583	\$50,518,000,000	\$925,262,000	\$59,600

¹ The Assessable Payroll and Premiums shown above for 1999 and prior years differ from the numbers shown for those years in the 1999 and earlier editions of this table because the figures in the earlier editions included Rateable Employers, Self-Insured Employers, and the Federal Government, whereas the above data is for Rateable Employers only.

Prevention Statistics

Breakdown of Field Officers' Worksite Time



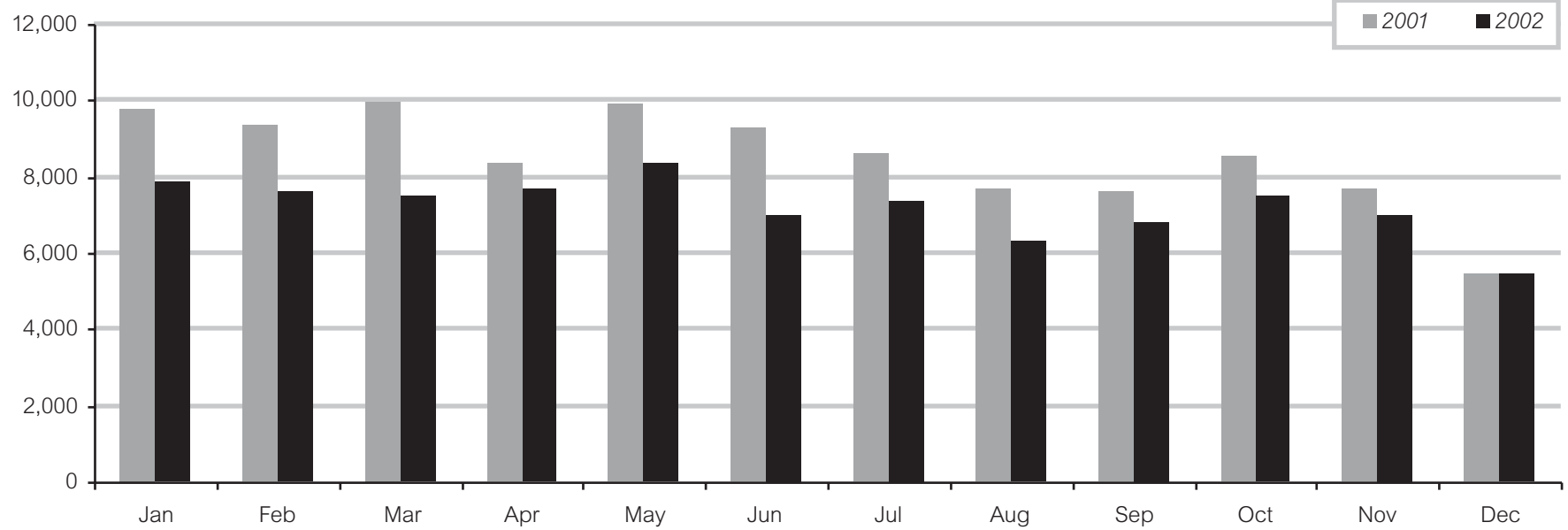
Regional Services — Field Officers' Time

Worksite Activity (Hours)	2002	2001	% Change
Inspection	108,517	122,305	-11.3%
Education	15,049	15,641	-3.8%
Consultation	55,220	61,310	-9.9%
Investigation	28,347	17,488	62.1%
Other Industry/Worker Services	66,016	60,575	9.0%
Total Worksite Hours	273,149	277,319	-1.5%

Document Type	2002	2001
Inspection Reports	22,015	28,648
Education Reports	1,575	1,868
Contact Records	17,041	16,788
Number of Orders Written	34,168	42,865

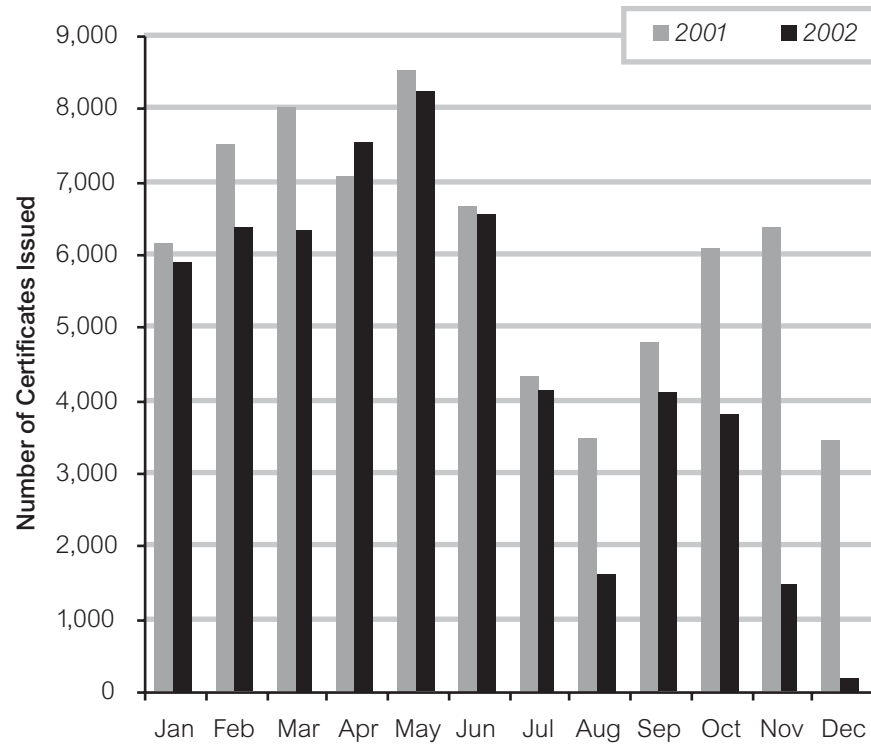
NOTE: This activity does not include the additional consultation and education activity provided by the Industry Services Department.

Prevention Division Call Centre — Number of Calls Received

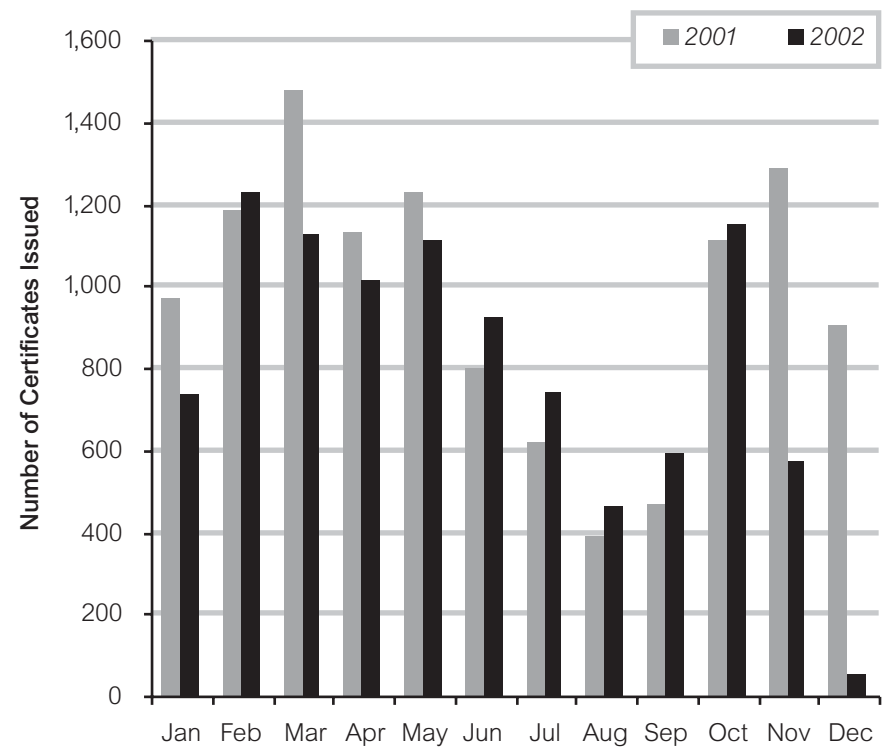


First Aid Certificates Issued

Level 1



Levels 2 and 3



Certificates Issued

	2001	% Total	2002	% Total	% Change
Level 1	72,348	73.9%	56,157	73.5%	-22.4%
Level 2 and 3	11,561	11.8%	9,704	12.7%	-16.1%
Transportation Endorsement	13,965	14.3%	10,517	13.8%	-24.7%
Total	97,874	100.0%	76,378	100.0%	-22.0%

NOTE: Certification activity is currently being conducted by private agencies authorized by the Board.

Occupational Hygiene Technical Services

Laboratory Analyses

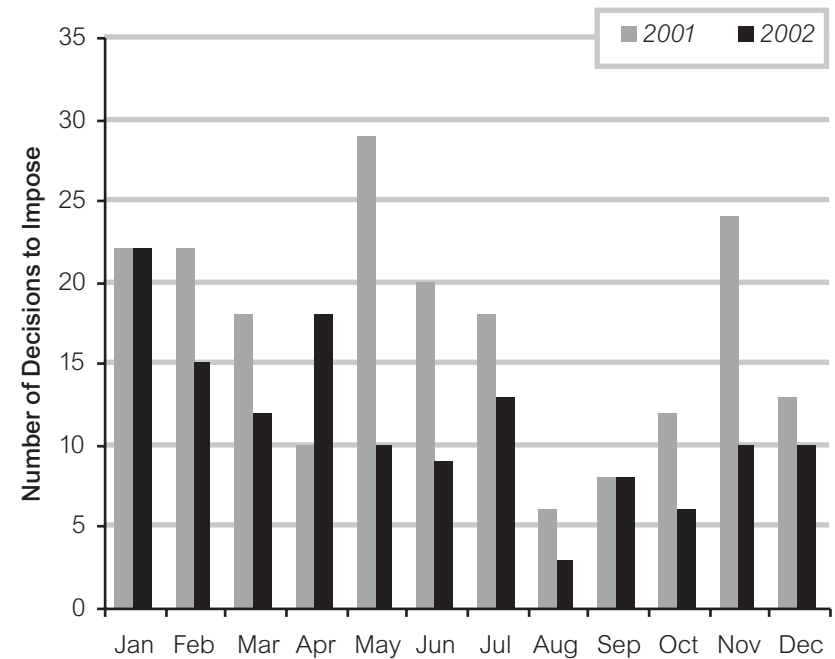
Number of	2002	2001
Samples	2,029	2,556
Compliance Determinations	4,000	8,577
Quality Assurance Analyses	327	577
Field Equipment Transactions	1,933	3,192

Review and Penalty Activity

	2002	2001	% Change
Administrative Penalties			
Penalties Recommended	138	184	-25.0%
Total \$ of Penalty Letters Issued	\$1,975,123	\$4,271,940	-53.8%
Penalties Imposed (Number of)	136	202	-32.7%
Penalties Imposed (\$)	\$1,764,200	\$1,745,625	1.1%
Warning Letters Issued	496	708	-29.9%
Decision Reviews			
Decision Reviews (Number of)	115	108	6.5%
Discrimination Complaints			
Complaints (Number of)	142	205	-30.7%

NOTE: This information only reflects divisional activity. The appeals process may further affect this data.

Penalties



For more information about the WCB and its activities, refer to these publications:

Annual Reports

Workers' Compensation Board of British Columbia 2002 Annual Report

This comprehensive report contains operational highlights and financial reviews, and the administrative activities of the WCB.

Appeal Division 2002 Annual Report

A report of the Appeal Division, which covers the handling of new matters initiated and appeals from Review Board findings, is published in the *Workers' Compensation Reporter*.

Medical Review Panel 2002 Annual Report

A review of the year's activities, including the handling and results of applications, is published in the *Workers' Compensation Reporter*.

Criminal Injury Compensation Program of British Columbia 2002 Report

A review of the criminal injury claims received during 2002, including a summary of expenditures and sample decisions on claims.

To order

For copies of these publications or for additional copies of the *Statistics 2002* report, contact:

Publications and Videos Distribution

Customer Service

Toll free: 1 866 271-4879

Fax: 1 866 362-3130

E-mail: moore-wcb.customer.service@ca.moore.com

Internet: www.worksafebc.com